

# Adobe Creative Cloud

INSTALLING AND ACCESSING | MAC VERSION

---

FOR LONG BEACH CITY COLLEGE **STUDENTS**

# Overview

---

In this tutorial, you will learn how to:

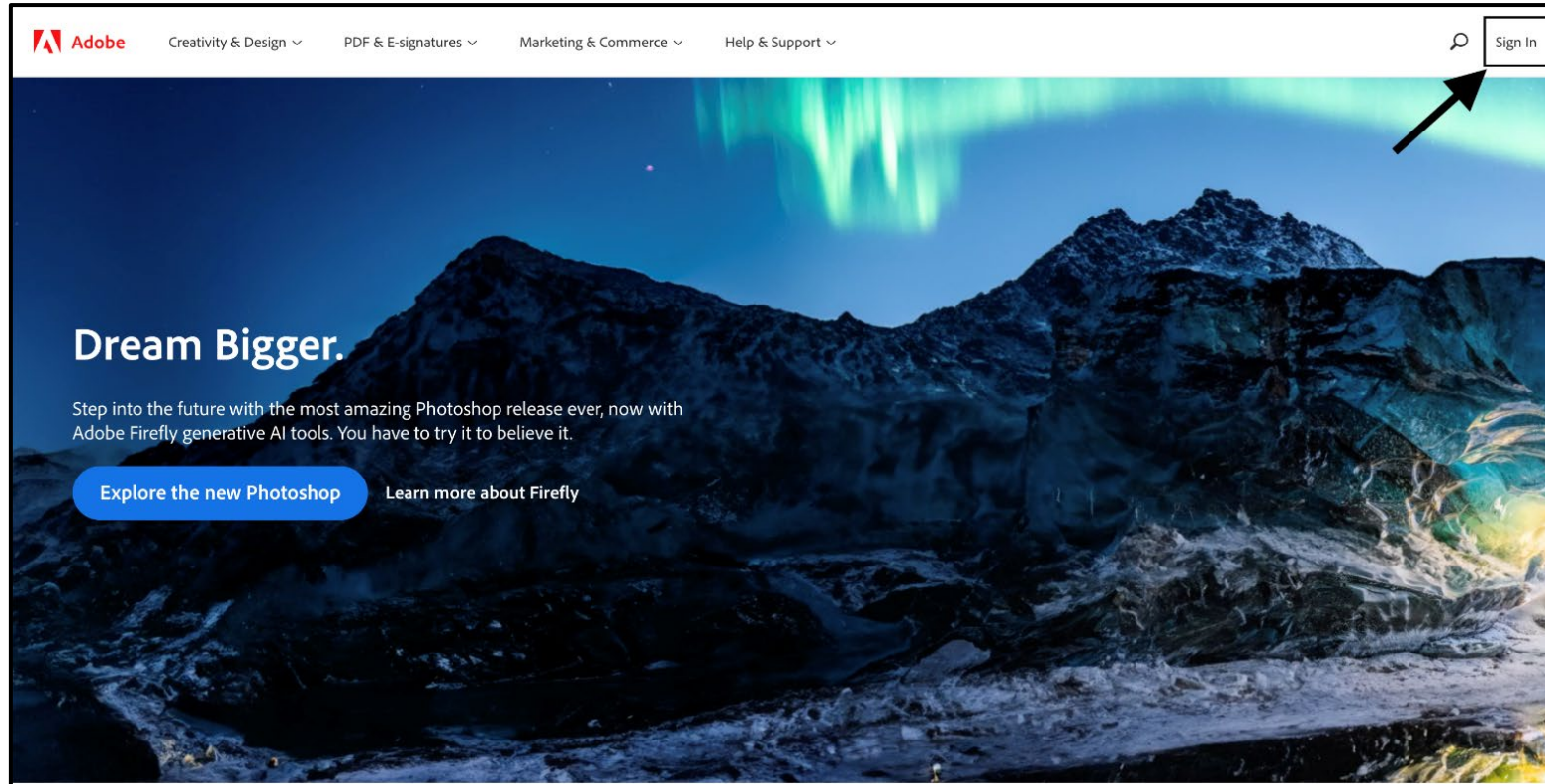
- Download and Access Adobe Creative Cloud on macOS

## **\*Important Note\***

This process may differ depending on the operating system and browser that your personal device is currently running. **This guide is specific to macOS, which is an operating system specific to Apple laptops and computers. We will also be using the Google Chrome browser.**

# Step 1: Navigate to the Adobe Website

Using your web browser, navigate to [Adobe.com](https://adobe.com) and click **Sign in**.



# Step 2: Adobe Sign in Page

In the email box, type your information in the following format: "Student ID@lbcc.edu"

Example: 0123456@lbcc.edu

Click **Continue**.

**Sign in**

New user? [Create an account](#)

Email address  
0123456@lbcc.edu

Continue

Or

Continue with Apple

Continue with Google

Continue with Facebook

[Get help signing in](#)

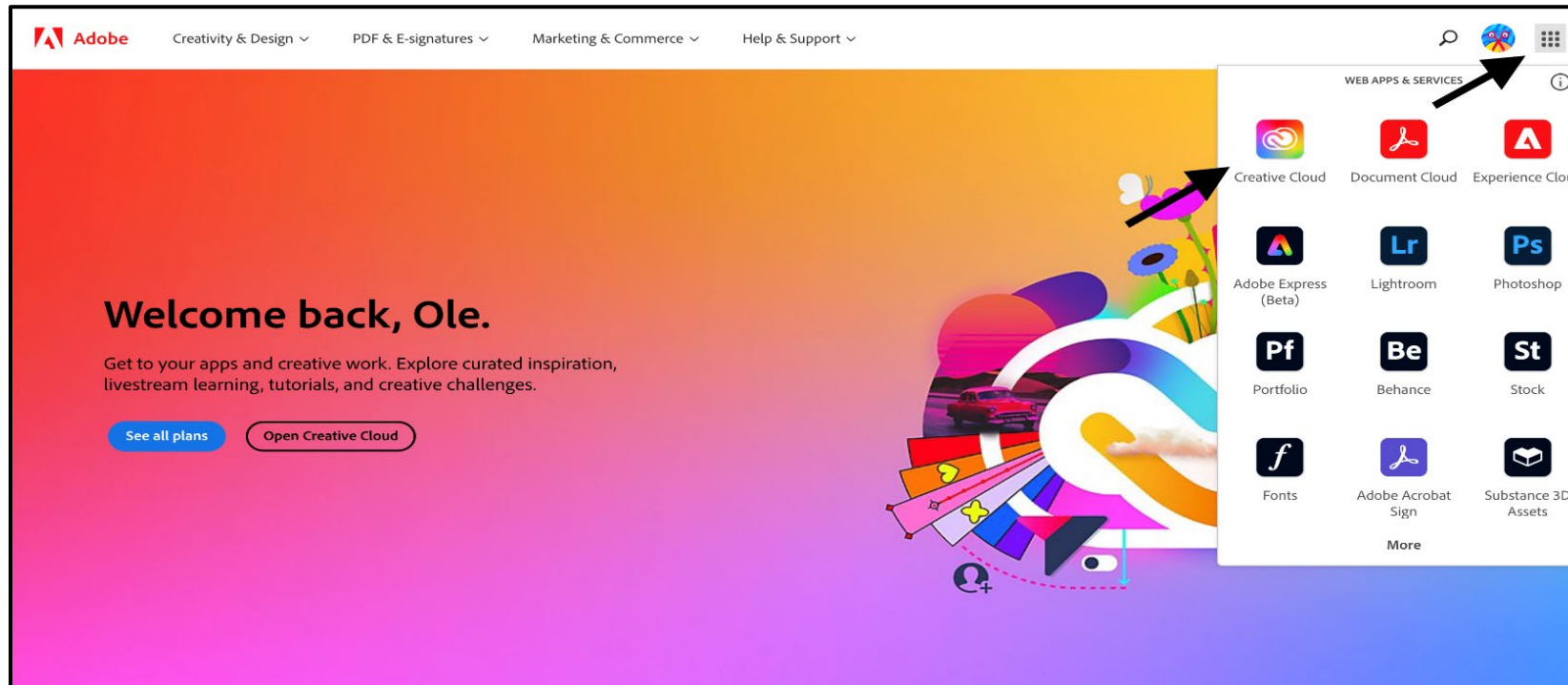
# Step 3: Log in to the Viking Portal

You will be redirected to a Viking Portal sign-in page. Log in using your Student ID, Password, and OTP.

The screenshot shows a dark-themed login page for the Viking Portal at Long Beach City College. At the top, it says "VIKING PORTAL" in white. Below that is the Long Beach City College logo, featuring a large red "B" with "LONG BEACH CITY COLLEGE" in white text to its right. The login fields are labeled "VikingID / EmployeeID" and "Password". The first field contains the placeholder text "Enter your username" and the second field contains "Enter your password". Below the fields is a large, rounded "Login" button. At the bottom, there are two links: "[New/Forgotten Password](#) | [Change Password](#)" and a list of links: "[Student Login Help](#)" and "[Faculty/Staff Login Help](#)".

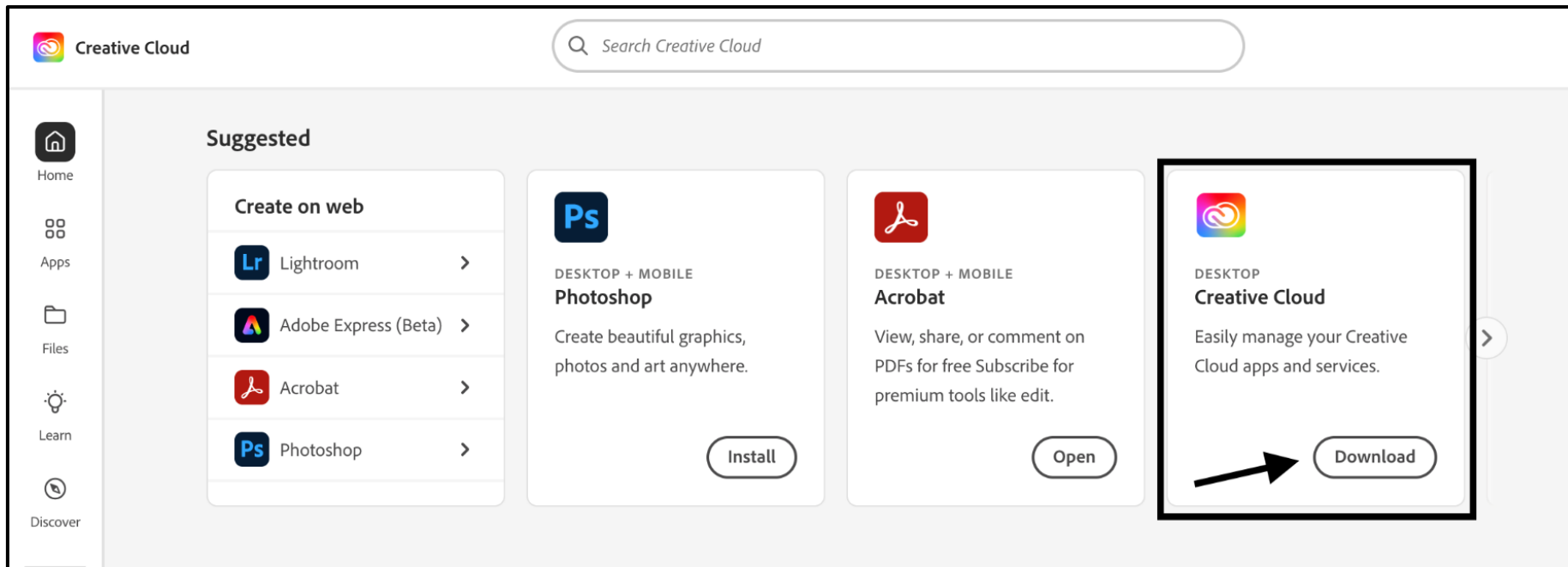
# Step 4: Open Creative Cloud

After signing into the Viking Portal, you will be directed to the Adobe homepage. Click on the **menu icon** located at the top right corner. When the menu opens, click on **Creative Cloud**.



# Step 5: Start the Download for Creative Cloud

The option to download Creative Cloud will appear. Click **Download**. You should see the download file appear on your screen (the location of the download file may differ depending on your browser), Click on the file to open it.



# Step 6: Install Creative Cloud

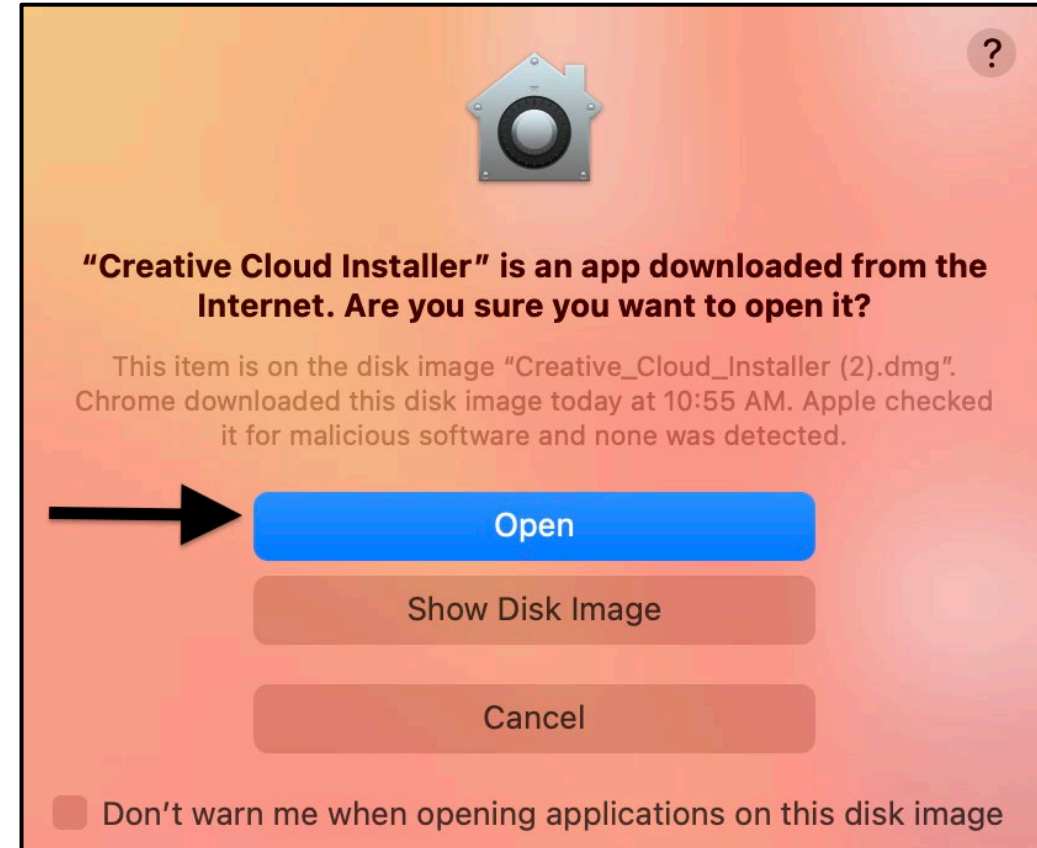
The creative cloud installer will open. Double-click the **logo** to install Creative Cloud.





# Step 7: Confirm Installation

You will be presented with a prompt asking if you are sure you want to open the Creative Cloud installer. Click **Open**.



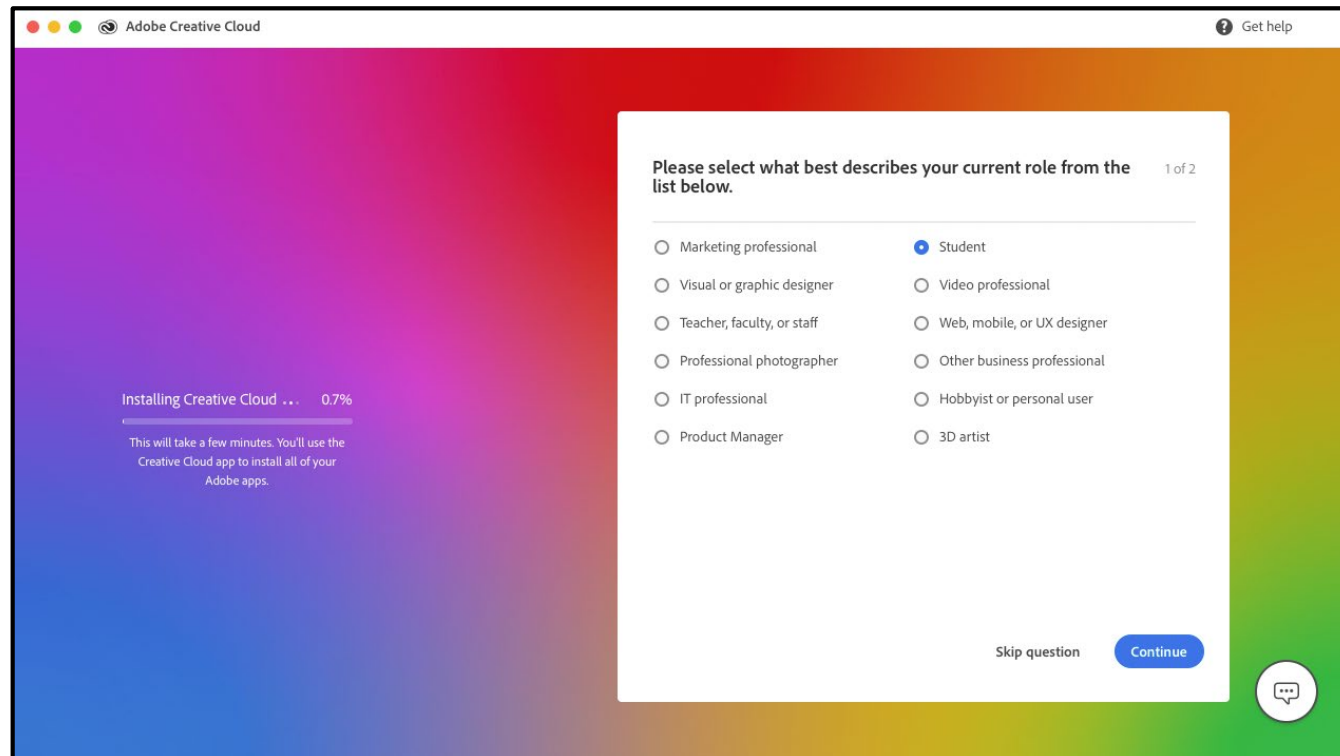
# Step 8: Enter Login Credentials

To allow the installer to make changes to your device, enter your device's username and password. Click **OK** when you are done.



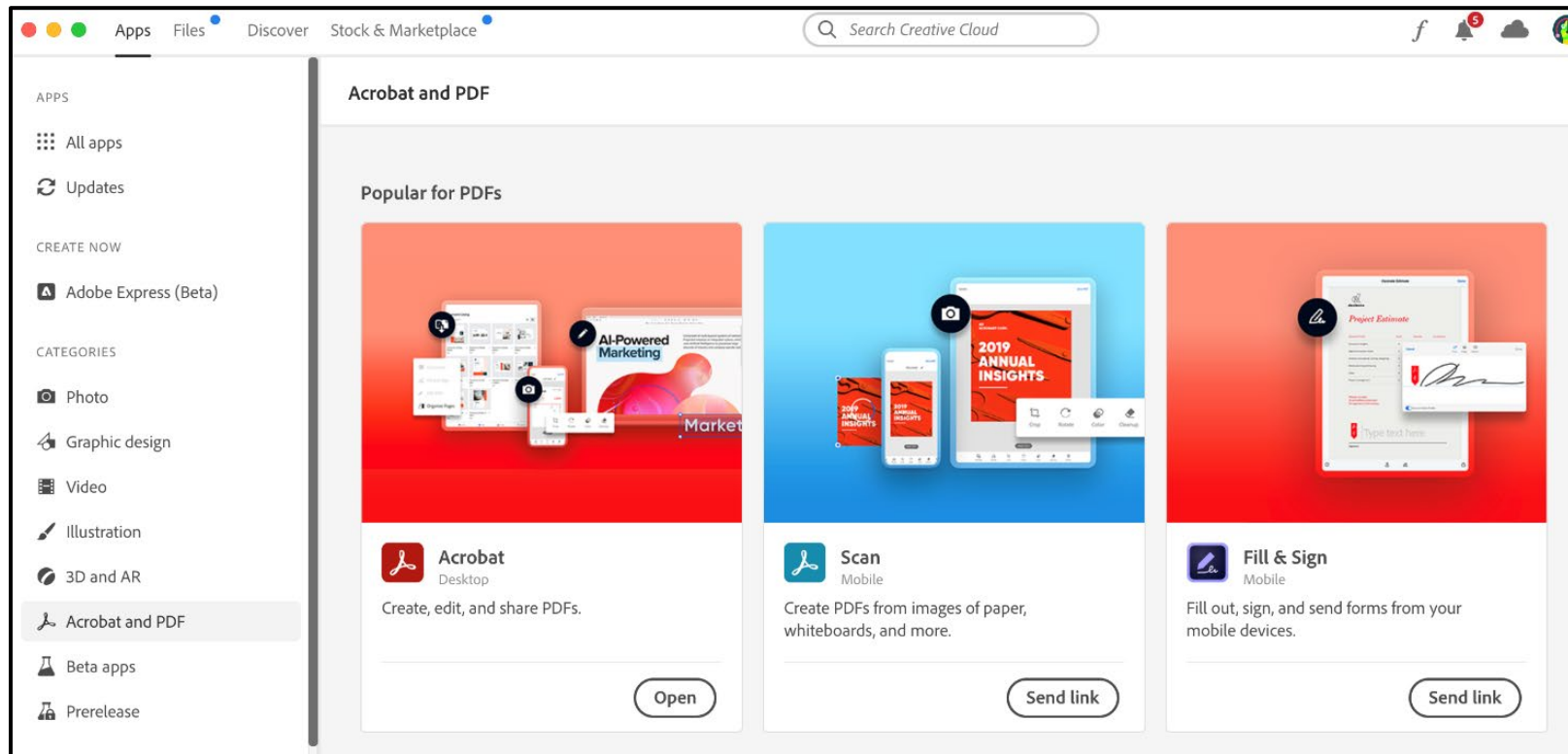
# Step 9: Answer Set Up Questions

As Creative Cloud finishes installing, you will be asked a few optional questions. Feel free to answer them or you can select **Skip Question**.



# Congratulations!

You have installed Adobe Creative Cloud to your Mac device.



# Questions?

---

If you run into any issues, or have further questions, feel free to reach out to us!

- Website: [www.lbcc.edu/sthd](http://www.lbcc.edu/sthd)
- Phone: (562) 938-4250
- Email: [sthd@lbcc.edu](mailto:sthd@lbcc.edu)