



Long Beach Community College District

Citizens Oversight Committee Annual Report for Year Ending December 2010 to the Board of Trustees

Board of Trustees

Dr. Thomas J. Clark, President
Roberto Uranga, Vice President
Mark Bowen
Jeffrey A. Kellogg
Douglas Otto

Superintendent-President

Eloy O. Oakley

Vice President, Administrative Services

Ann-Marie Gabel

Citizens Oversight Committee

Through June 30, 2010

JC Squires, Chairperson
Gary Westling, Vice-Chairperson
Barbara Long, Secretary
Dina Berg
Gary Cooper
Barry McDaniel
Dario Ambriz, ASB President

Effective July 1, 2010

JC Squires, Chairperson
Gary Westling, Vice-Chairperson
Barbara Long, Secretary
Barry McDaniel
Suzanne Nosworthy
Chris Robbins
Isaac Romero, ASB President

January 18, 2011

Citizens Oversight Committee 2010 Annual Report to the Board of Trustees

January 18, 2011

Background

On November 7, 2000, California voters approved Proposition 39, the Smaller Classes, Safer Schools and Financial Accountability Act. In conjunction with the passage of Proposition 39, the Legislature passed a series of bills both restricting and mandating actions of local governing boards under Proposition 39. Proposition 39 went into effect on November 8, 2000 and the statutory measures went into effect January 1, 2001.

The District has issued two bonds under Proposition 39: Measure E - 2002 and Measure E – 2008.

Measure E - 2002

On December 4, 2001, the Board of Trustees of the Long Beach Community College District (District) called for a general obligation bond election. The ballot language for the Measure E Bond funds reads, “In order to renovate, repair, and replace aging educational facilities, including replacement of electrical, plumbing and sewer systems, add classrooms, acquire equipment, construct job training facilities and high tech computer labs, upgrade restrooms, renovate heating and ventilation system, install fire safety equipment, replace outdated classrooms and libraries and establish a Citizens Oversight Committee, shall the Long Beach Community College District issue \$176 million in bonds, at interest rates within the legal limit?” On March 5, 2002, the District’s resident voters passed the general obligation bond, Measure E.

Measure E - 2008

On February 5, 2008, voters residing in the District were asked: “to qualify for State matching funds that will better prepare Long Beach college students for high demand jobs, shall Long Beach Community College District renovate science, nursing, police, and firefighting classrooms, upgrade classroom technology and high-tech training labs; repair aging roofs, electrical, plumbing, heating, and ventilation; and upgrade/construct/equip/acquire classrooms, facilities, sites; by issuing \$440 million in bonds, at legal rates, with citizens oversight, mandatory audits, and all funds staying local to improve Long Beach City College facilities?”

The voters overwhelmingly approved the measure with a 73.22% pass rate.

Citizens Oversight Committee Charge

It is the charge of the Citizens Oversight Committee (COC) to monitor the expenditures of the Measure E 2002 and 2008 Bond funds and report to the public on the District's compliance with Proposition 39. It is the committee's role to: 1) review quarterly expenditure reports produced by the District to ensure that (a) bond proceeds are expended only for the purposes set forth in the ballot measure and no bond proceeds are used for any teacher or administrative salaries or other operating expenses; 2) present to the Board, in public session, an annual written report; 3) receive and review copies of the District's annual independent performance audit and annual independent financial audit; 4) inspect school site facilities and grounds for which bond proceeds have been or will be expended; 5) review copies of capital outlay plans developed by the District; 6) review the District's efforts to maximize use of Bond proceeds in ways designed to: a) reduce costs of professional fees or site acquisition; b) incorporate efficiencies in school site design; c) encourage joint use of core facilities; or d) involve cost-effective and efficient reusable facility plans.

Review Quarterly Expenditure Reports

The Citizens Oversight Committee met on the following dates:

January 25, 2010



April 26, 2010



July 26, 2010



October 25, 2010



At each meeting we reviewed the quarterly expenditure reports and noted that all expenditures were for projects that appeared on the ballots as approved by the voters.

Long Beach Community College District's Projects

Listed below are some of the completed, current and upcoming projects:

Completed Projects - Measure E 2002

Automotive and Aviation Complex (Tech 2) at PCC
Boiler Replacements at LAC
Building UU/VV Demolition at PCC
Building Z Retrofit at LAC
Central Plant at LAC
Central Plant at PCC
Child Development Center at PCC
District Facilities and Warehouse Complex at LAC
Industrial Technology Center at PCC
Infrastructure Improvements at PCC
Language Arts Building Renovation at LAC
Large Gym Façade and Renovations at LAC
Learning Resource Center at LAC
Learning Resource Center at PCC
Small Gym Renovations at LAC
South Quad Complex at LAC



Automotive and Aviation Complex
(Tech 2) at PCC



Central Plant at LAC



Central Plant at PCC



Child Development Center at PCC

Long Beach Community College District's Projects (continued)

Completed Projects – Measure E 2002



District Facilities & Warehouse at LAC



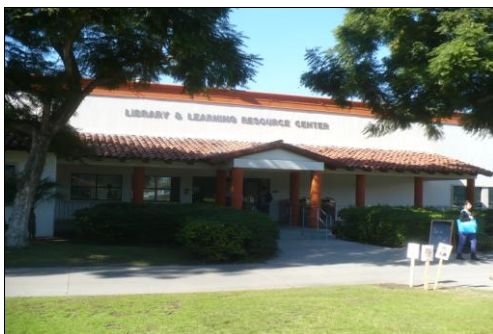
Industrial Technology Center at PCC



Language Arts Building Renovation at LAC



Large Gym Façade Renovations at LAC



Learning Resources Center at LAC



Learning Resource Center at PCC



Small Gym Renovations at LAC



South Quad Complex at LAC

Long Beach Community College District's Projects (continued)

Completed Projects – Measure E 2008

Purchase of O Buildings at LAC

Purchase of Property at PCC

Electronic Marquees at LAC and PCC



Electronic Marquee at LAC



Electronic Marquee at PCC



Building O at LAC (back building)

Current Projects – Measure E 2008

- Building A Student Services Retrofit at LAC – Constructed stated Winter 2010
- Building I Bookstore Retrofit at LAC – Construction started Fall 2010
- Building O at LAC – Construction started Spring 2010
- District Wide Building Needs Assessment Project – Ongoing
- Energy Efficiency Project – Construction started Spring 2010
- Exterior Lighting Improvements at LAC – Construction started Fall 2010
- HVAC Upgrades for Buildings B, C, D, E, G, H and S at LAC – Construction started Fall 2010
- Infrastructure Improvements at LAC – Construction started Fall 2009
- Landscape Implementation Improvements - Ongoing
- Multi-Disciplinary Academic Building at PCC – Construction started Summer 2010
- Parking Structure in Lot J at LAC – Construction started Spring 2010

Long Beach Community College District's Projects (continued)

Current Projects – Measure E 2008 (continued)



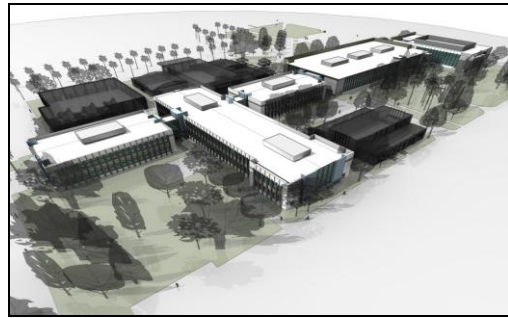
Building A Student Services Retrofit at LAC



Building I Bookstore Retrofit at LAC



Building O at LAC (front building)



Multi-Disciplinary Academic Building at PCC



Parking Structure in Lot J at LAC

Long Beach Community College District's Projects (continued)

Upcoming Projects – Measure E 2008

- Building C Modernization at LAC – Estimated Start of Construction Spring 2013
- Building CC Retrofit at PCC – Estimated Start of Construction Summer 2011
- Building GG Retrofit at PCC – Estimated Start of Construction Fall 2012
- Building F Modernization at LAC – Estimated Start of Construction Spring 2013
- Building II Sheet Metal Retrofit at PCC – Estimated Start of Construction Spring 2011
- Building Q & R HVAC Upgrades at LAC – Estimated Start of Construction Spring 2012
- Math /Technology Building at LAC – Estimated Start of Construction Spring 2013



Building CC Retrofit at PCC

Receive and Review the Annual Independent Performance Audit

The external audit firm of Moss Adams conducted the Performance Audit for Fiscal Year Ended June 30, 2010. The performance audit team evaluated the Long Beach Community College District's (District) Measure E Bond Program expenditures against 2002 Measure E, 2008 Measure E and Proposition 39 requirements. The audit team tested expenditures during the periods July 1, 2009 through June 30, 2010 for compliance with Bond Program objectives.

The audit team conducted its audit in accordance with Generally Accepted Government Auditing Standards (GAGAS) issued by the Comptroller General of the United States and reported that **the audit found no discrepancies in the use of expenditures for approved Bond Fund purposes.** In addition there were no audit findings observed.

	<i>Total Expenditures</i>	<i>Expenditures Tested</i>	<i>Percent Tested</i>
2002 Measure E Bond			
7/1/09 – 6/30/10	\$16,046,087		
2008 Measure E Bond			
7/1/09 – 6/30/10	\$22,154,680		
	\$38,200,767	\$24,547,819	64.3%

Receive and Review the Annual Independent Performance Audit (continued)

Moss Adams presented its performance audit findings for Fiscal Year Ended June 30, 2009 to the COC at its meeting of January 25, 2010. The Performance Audit for Fiscal Year Ended June 30, 2009 was received by the COC unanimously.

Receive and Review the Annual Independent Financial Audit as it Relates to the Bond Funds

The external audit firm of Vicenti, Lloyd, & Stutzman, LLP conducted the Financial Audits for Proposition 39, General Obligation Bonds for both the 2002 Measure E Bond and 2008 Measure E Bond for the Fiscal Year Ended June 30, 2010. The financial audit team conducted its audits in accordance with generally accepted auditing standards and the standards applicable to financial audits contained in Governmental Auditing Standards.

In regard to the audits of both the 2002 Measure E Bond and the 2008 Measure E Bond for the Fiscal Year Ended June 30, 2010, it is the opinion of the financial audit team that the financial statements present fairly, in all material respects, the financial position and results of operations for the Bond Construction Fund of the Long Beach Community College District as of June 30, 2010 in conformity with accounting principles generally accepted. **There were no findings or questioned costs related to the Bond Construction Fund financial statements and the District received an unqualified audit opinion.**

Vicenti, Lloyd, & Stutzman, LLP presented its financial audit findings for Fiscal Year Ended June 30, 2009 to the COC at its January 25, 2010 meeting. The Financial Audit for Proposition 39, General Obligation Bonds and Measure E Bond for the Fiscal Year Ended June 30, 2009 was received by the COC unanimously.

To view the complete audit reports, please visit the District's Measure E Bond Audit page at: http://fiscal.lbcc.edu/2002_measure_e_bond_audits.cfm

Inspection of College Facilities and Grounds Where Bond Proceeds Are Being Spent

The Citizens Oversight Committee (COC) inspected the Long Beach Community College District's facilities and grounds where Measure E Bond proceeds were spent.

Construction, modernization, and renovation projects that the Long Beach Community College District residents voted for in both the 2002 and 2008 Measure E Bond funds ballots which came to life in 2009 included the following:

Ribbon Cutting Ceremony for the South Quad Complex (Building T)

January 22, 2010



Pictured above from left: Trustee Tom Clark, Trustee Jeff Kellogg, Trustee Mark Bowen, President-Superintendent Eloy Oakley, Trustee Doug Otto, Trustee Roberto Uranga, & Ann-Marie Gabel, VP, Administrative Services

Ribbon Cutting Ceremony for Tech I at PCC

April 2, 2010



Pictured above from left: Trustee Jeff Kellogg, Trustee Tom Clark, Mayor Bob Foster, Trustee Doug Otto, Trustee Roberto Uranga, Byron Breland, Assoc. VP, PCC and Trustee Mark Bowen (back row)

2010 Citizens Oversight Committee Members

Committee Members Through June 30, 2010

J C Squires, Chairperson
Gary Westling, Vice-Chairperson
Barbara Long, Secretary
Dina Berg
Gary Cooper
Barry McDaniel
Dario Ambriz

Representing

Community At Large
Community At Large
Local Business Community
Bona-Fide Tax Payers Association
Senior Citizens Organization
Support Organization for the College
Associated Student Body

Committee Members Effective July 1, 2010

JC Squires, Chairperson
Gary Westling, Vice-Chairperson
Barbara Long, Secretary
Barry McDaniel
Suzanne Nosworthy
Chris Robbins
Isaac Romero

Representing

Community At Large
Bona-Fide Tax Payers Association
Local Business Community
Support Organization for the College
Senior Citizens Organization
Community At Large
Associated Student Body

***Respectfully Submitted to the
Board of Trustees on January 18, 2011 by
J C Squires, Chairperson***

