



LONG BEACH CITY COLLEGE

Construction Update

Citizens' Oversight Committee

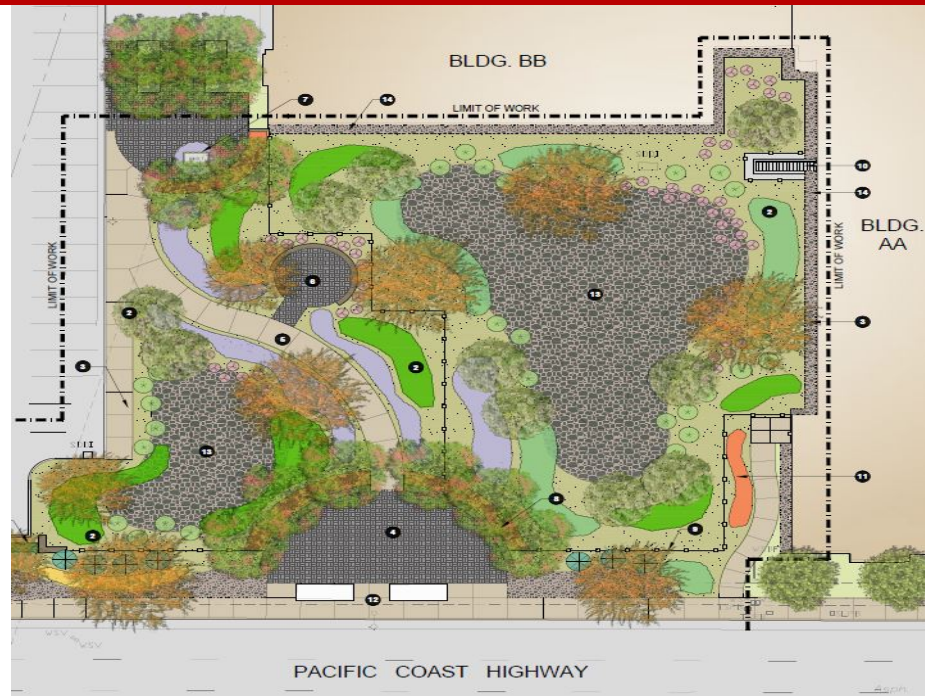
*Long Beach Community College District
January 29, 2018*

AGENDA

- ❑ **Scheduled Maintenance Projects**
- ❑ **District Wide Energy Projects**
- ❑ **Campus Improvement Projects**
- ❑ **Current Construction Projects**
 - ❖ LAC Building D - Science Labs
 - ❖ District Wide Security Monitoring System
 - ❖ LAC Building P - English Studies
 - ❖ LAC Building J - Auditorium
- ❑ **Current Design Projects**
 - ❖ LAC Kinesiology Labs and Aquatic Center
 - ❖ PCC Parking Structure – P2
 - ❖ LAC Building M – Multi-Disciplinary Classroom
 - ❖ PCC Building MM – Construction Phase I
 - ❖ LAC Central Plant Expansion

Scheduled Maintenance Projects

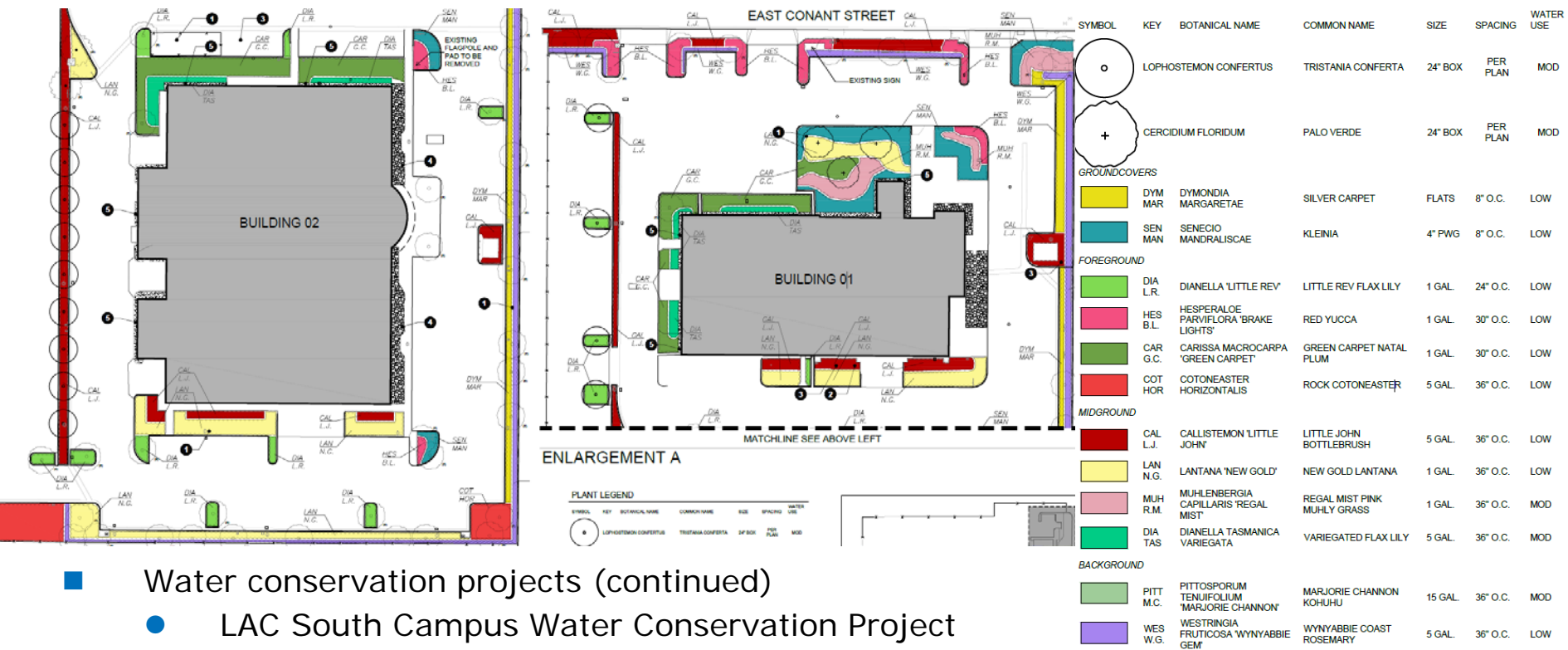
Fiscal Year 2015/16 \$3,089,434 (State Funds & Measure LB)



- Water conservation projects
 - Awarded design contract to HPI.
 - PCC Campus Water Conservation Project
 - ◆ Southwest of Campus, Bldg. HH and Bldg. II.
 - ◆ Notice to proceed issued January 2018.
 - ◆ Estimated construction completion Summer 2018.

Scheduled Maintenance Projects

Fiscal Year 2015/16 \$3,089,434 (State Funds & Measure LB)



- Water conservation projects (continued)
 - LAC South Campus Water Conservation Project
 - ◆ Bldg. O1 and Bldg. O2 – Landscape and reclaimed water.
 - ◆ Bldg. Z – Reclaimed water only.
 - ◆ Design complete.
 - ◆ Currently in bid process.



Scheduled Maintenance Projects

Fiscal Year 2016/17 \$2,846,905 (State Funds and Measure LB)

- District-Wide Project for ADA Upgrades
 - PCC - Westberg and White (Design Consultant) preparing design documents to address deficiencies as identified in the CASp survey for the PCC campus.
 - ◆ Phase 1 Site Package - Bid opening on 1/23/18
 - ◆ Phase 2 Building Package – DSA back-check scheduled for end of February. Bid process to start in March.
 - LAC - DLR Group (Design Consultant) preparing design documents to address deficiencies as identified in the CASp survey for the LAC.

- Door Lockdown Project
 - Phase II
 - ◆ PCC Campus - Retrofit doors in Buildings HH, GG, CC, JJ, II, and MM.
 - ◆ LAC Campus - Retrofit doors in Buildings A, T, and CDC.
 - ◆ Bids due end of January.



Scheduled Maintenance Projects

Fiscal Year 2017/18 \$639,456 (State Funds Only)

- Project Facilities Proposals (PFP) Submitted on September 13, 2017

- High Voltage Electrical Improvements
 - Replacement of oil switch and transformer at Bldg. G.
 - Replacement of oil switch at PCC main distribution.
 - Currently soliciting proposals for designers.

- Lighting Inverter Replacement
 - Scope includes lighting inverter replacement at LAC Building T and PCC Building JJ.
 - NTP issued on January 4, 2018.
 - Demo work complete.
 - Re-routing of conduit and new wiring complete for new inverter.
 - Estimated project completion February 2018.



District Wide Energy Projects

Prop 39 Years 3, 4, & 5 – 2015-18 Projects \$1,878,957

- LED Lighting Retrofits, Buildings T, HH and O2
 - Approximately 207,140 kWh/yr. in energy savings and \$30,263 in cost savings.
 - Notice to Proceed issued to LBCC, June 2017.
 - 10 weeks for equipment submittal and procurement.
 - Installation targeted for Spring 2018.
 - Delayed due to Manufacturer filing chapter 7.
 - ◆ New manufacturer selected and approved.
 - All overhead work complete.
 - Next phase will be to install new LED fixtures. Work will start in Bldg. O2.



District Wide Energy Projects Integrated Energy Master Plan (IEMP)

- DLR Group was selected to create the Energy Master Plan.
- IEMP to include a clear path towards compliance with the Governor's Executive Orders.
 - District-Wide Net Zero Goal.
- IEMP will be integrated with the 2041 Facilities Master Plan & future designs.
 - Integrate IEMP to District Design Standards.
- Assessment and Planning Services
 - Central Plant/Building Analysis – load analysis.
 - Design recommendations
 - ◆ District-Wide net zero goal
 - ◆ On-site energy generation
 - ◆ Water Management
- Project started Summer 2017, estimated completion Spring 2018.
- Total project budget = \$211,944



Campus Improvement Projects

Fiscal Year 2016/17 Campus Improvements (Measures E & LB)

- Facility Advisory Committee Approved 2/22/17
 - Building HH – Artificial Turf for courtyard (\$100,000) – *Complete*
 - Building T – Room 1200 Replace carpet and paint (\$30,000)
 - ◆ Paint complete
 - ◆ Carpeting to be completed by end of January.
 - Building R – Thermostat for gym heater (\$60,000) – Soliciting proposals.

- Facility Advisory Committee Approved 4/19/17
 - Baseball field - Scoreboard replacement (\$130,000).
 - ◆ Equipment delivery expected February.
 - Bldg. MM - Trailer removal (\$20,000) *Complete*
 - Bldg. L – Replace basement Vinyl floor (\$13,000) *Complete*
 - CDC (LAC) – Replace carpet in classrooms and offices (\$16,000) *Complete*



Campus Improvement Projects

Fiscal Year 2017/18 Campus Improvements (Measure LB)

- Facility Advisory Committee Approved 11/8/17
 - Building Q – Installation of glue down ceiling tiles for Q113 (\$13,000)
 - ◆ Soliciting proposals
 - Building MM – HVAC upgrade (\$65,000)
 - ◆ Processing bid proposals
 - Building EE – Room 108 upgrade (\$50,000)
 - ◆ Soliciting proposals
 - Building HH – Shade structure installation (\$20,000)
 - ◆ Soliciting proposals for design firm

LAC Building D 1st and 2nd Floors – Science Labs (Measure E)



- MSP Architects – Design Firm, Soltek Pacific Construction – Contractor.
- Renovate 16,000 square feet of 1st floor and 2,573 square feet of 2nd floor for new Science Labs.
- Project started September 2016, original estimated construction completion Fall 2017.
- New estimated construction completion Fall 2018.
- LBCC issued termination letter on 5/22/17 to TB Penick & Sons. Finalized agreement with Western Surety Company to move project forward in November 2017. Soltek was issued NTP on December 4, 2017.
- Total project budget = \$14,635,024

District Wide Security Monitoring System (Measures E & LB)



PCC Campus

Red = Facial recognition
Green = Camera coverage

- P2S Engineering – Design Firm, Pars Arvin – Contractor.
- Project started in October 2016, estimated construction completion Spring 2018.
- Design plan covers all exterior building entrances and heavy use areas.
- 98% of the 200 cameras have been installed at PCC.
- Currently working on programming Video Management System (VMS).

District Wide Security Monitoring System (continued) (Measures E & LB)

LAC Campus

Red = Facial recognition

Green = Camera coverage



- Maintenance and support assessment addressed during the design process. New staff position created based on assessment.
- Long Beach Police can view cameras in an emergency through VMS.
- 98% of the approximately 400 cameras have been installed at LAC.
- Total project budget = \$10,308,743

Current Construction Projects

LAC Building P – English Studies (Measures E and LB)



- Steinberg Architects – Design Firm, A&B Construction – Contractor.
- Occupants moved to swing space in Buildings M and N.
- Project will address ADA, classrooms, offices and MEP systems.
- Currently working on framing, sheathing and MEP rough-in.
- Construction started February 2017, estimated completion Fall 2018.
- Total project budget = \$11,015,941

Current Construction Projects

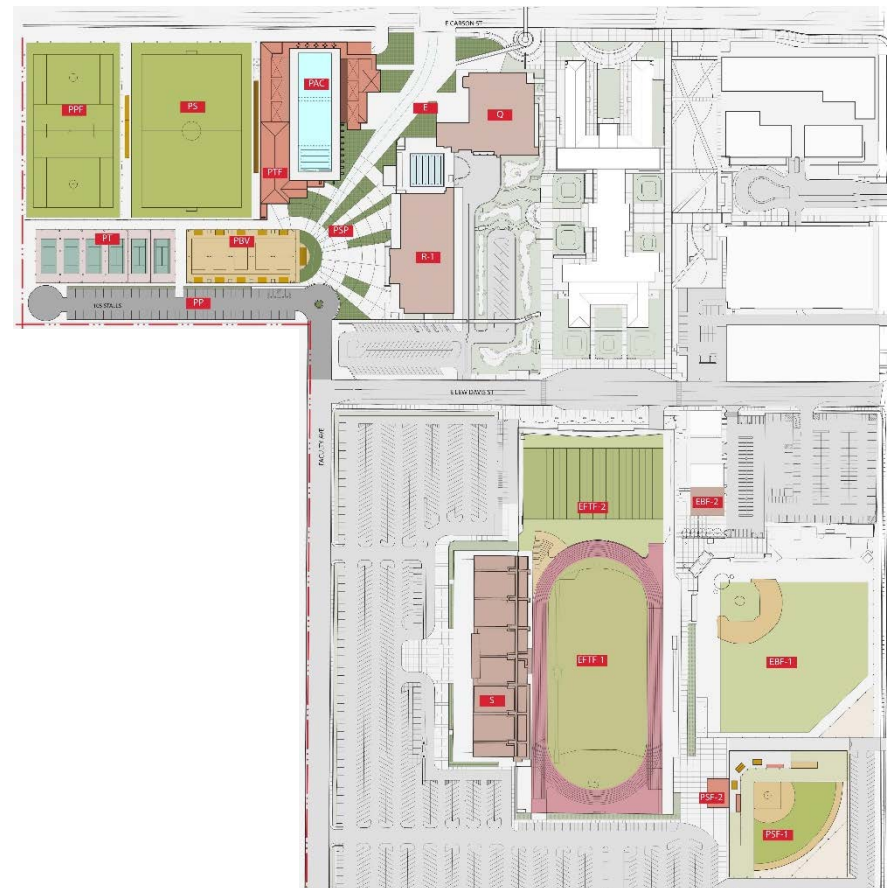
LAC Building J – Auditorium (Measures E & LB)



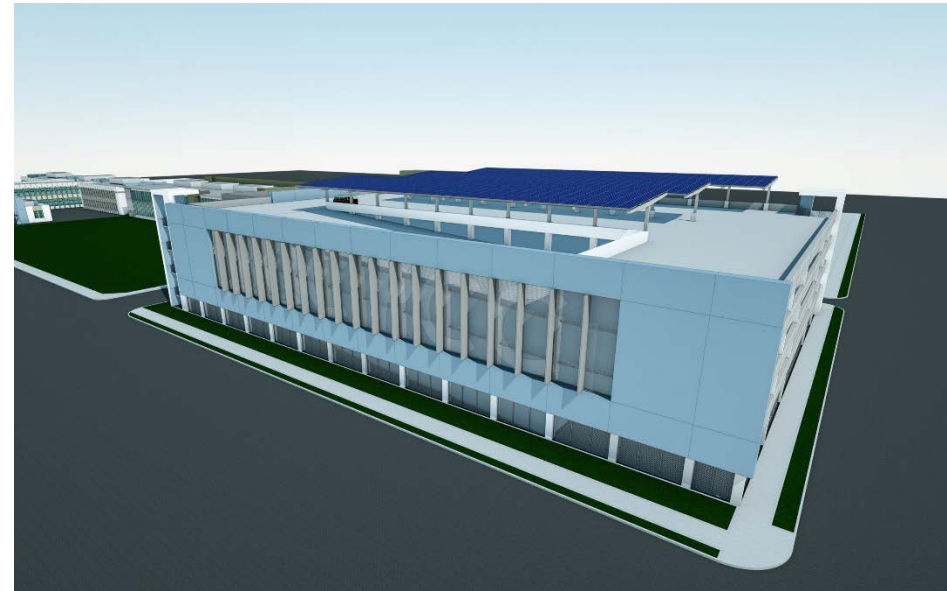
- SVA Architects – Design Firm, Novus Construction – Contractor.
- Renovate 37,878 GSF Auditorium, originally built in 1956.
- Adding 14,119 GSF onto northwest corner for additional classrooms, offices, storage and elevator.
- Upgrading structural, accessibility and fire/life safety to current codes.
- Notice to Proceed issued on January 16, 2018.
- Estimated completion Fall 2019.
- Total project budget = \$29,021,602

LAC Kinesiology Labs and Aquatic Center (Measures E & LB)

- Design contract awarded to Westberg and White, Spring 2017.
- Design for renovation of Outdoor Kinesiology Labs, which includes a softball field, soccer fields, sand volleyball courts, tennis courts and associated support facilities and infrastructure.
- Design also includes construction of a new Aquatic Center, which includes 50 meter pool and support building of approximately 15,000 sq. ft. to provide showers, locker rooms, storage, pool equipment and office spaces. Addressed ADA access issues, lighting and parking.
- Currently in Design Development phase.
- Anticipated construction start Spring 2019.
- Total project budget = \$44,238,099

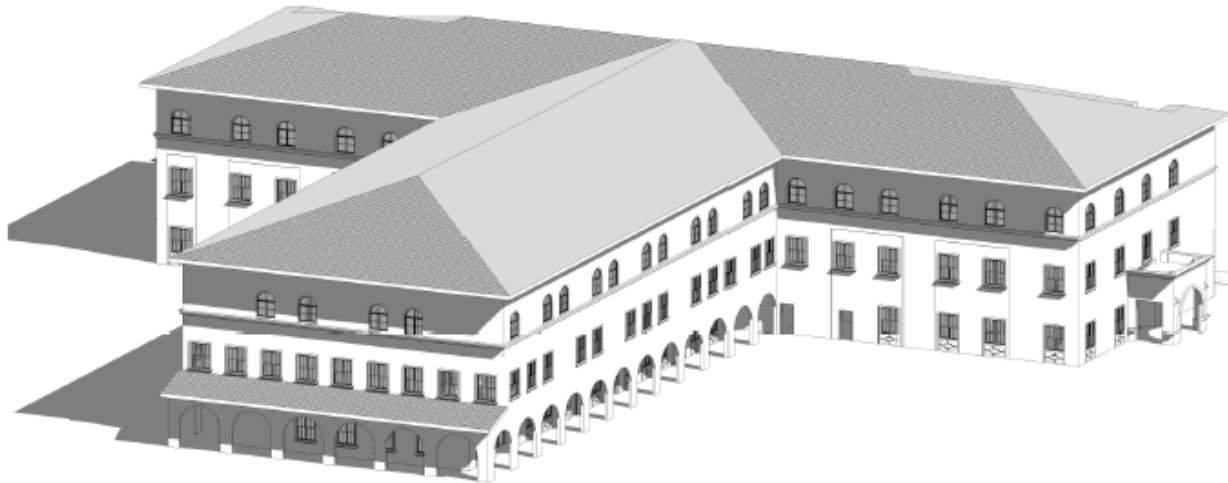


PCC Parking Structure – P2 (Measure LB)



- HPI Architecture selected to prepare bridging design documents.
- Design-Build delivery method.
- Parking structure to include solar panels on top floor.
- Parking structure to serve 500-600 vehicles for long term student and staff parking needs.
- To be located in parking lots 5, 6 and 8.
- Design-Build Entity to be selected Spring 2018.
- Total project budget = \$21,493,800

LAC Building M – Multi-Disciplinary Classroom (Measures E & LB & Prop. 51 State Funding)



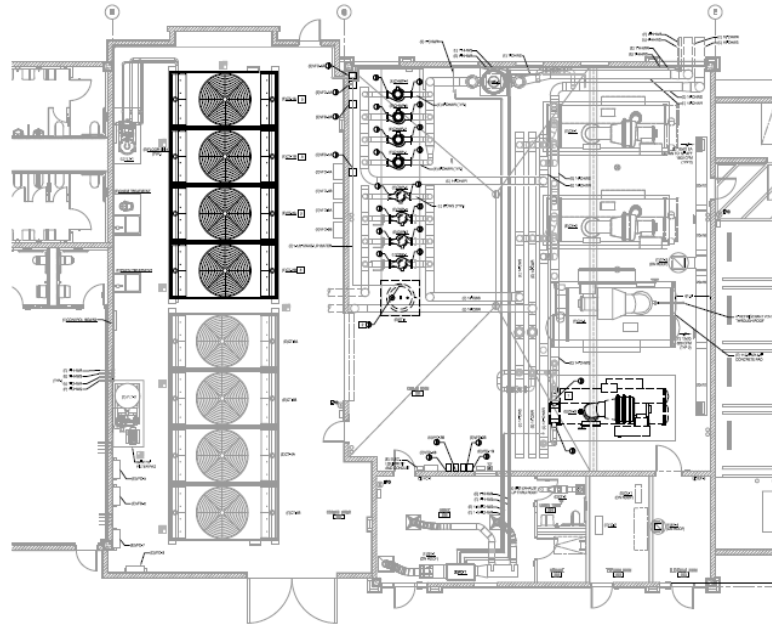
- First State funded project utilizing the Design-Build delivery method.
- GKK Works selected to prepare bridging design documents.
- Project requires demolition of the existing Buildings M and N.
- New construction of a 3 story building of 81,970 GSF to include classrooms and offices.
- This building will house Language Arts, Foreign Language, Computer and Office Studies (COS).
- Anticipated construction start Fall 2019, construction completion Fall 2022.
- Total project budget = \$70,096,798 (State funded = \$27,760,000)

PCC Building MM – Construction Phase I (Measures E & LB & Prop. 51 State Funding)



- State budget approved funding for Preliminary Plans only during fiscal year 17/18.
- HPI Architecture selected to prepare design documents.
- Project will consist of renovating West Wing of MM which houses the HVAC and Carpentry departments. Project will include demolishing the former Alternative Fuels section.
- Currently in Schematic Design phase.
- Anticipated construction start Fall 2019, construction completion Fall 2020.
- Total project budget = \$17,665,877 (State funded = \$7,096,729)

LAC Building X – Central Plant Expansion (Measure LB)



- P2S Engineering selected to prepare design documents.
- Project will consist of expanding the capacity of the existing Central Plant to accommodate upcoming growth shown in the 2041 Facilities Master Plan.
- Currently in Schematic Design phase.
- Anticipated construction start Fall 2019, construction completion Spring 2020.
- Total project budget = \$6,190,506

**QUESTIONS
&
ANSWERS**