



LONG BEACH CITY COLLEGE

Construction Update

Citizens' Oversight Committee

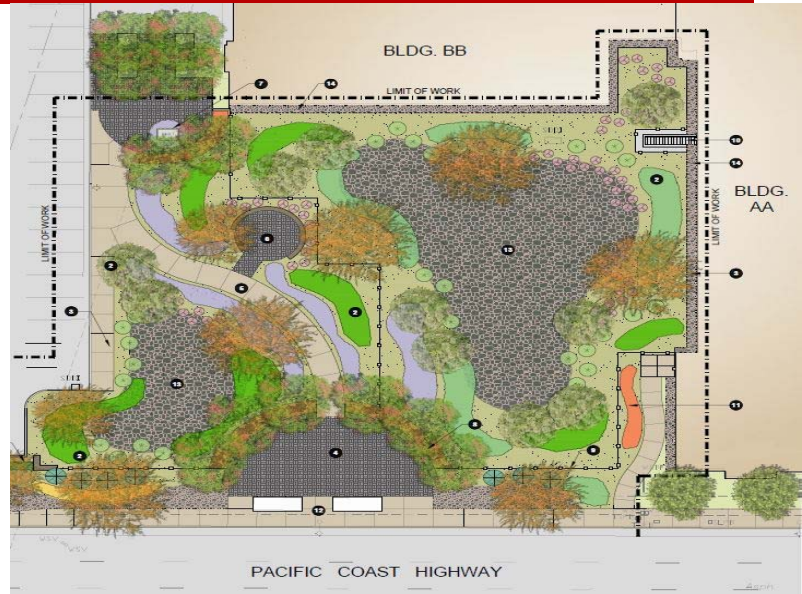
*Long Beach Community College District
August 27, 2018*

AGENDA

- ❑ **Scheduled Maintenance Projects**
- ❑ **District Wide Energy Projects**
- ❑ **Campus Improvement Projects**
- ❑ **Current Construction Projects**
 - ❖ LAC Building D - Science Labs
 - ❖ LAC Building P - English Studies
 - ❖ LAC Building J - Auditorium
- ❑ **Current Design Projects**
 - ❖ LAC Kinesiology Labs and Aquatic Center
 - ❖ LAC Building M – Multi-Disciplinary Classroom
 - ❖ LAC Building X - Central Plant Expansion
 - ❖ PCC Building MM – Construction Phase I
 - ❖ PCC Parking Structure – P2
- ❑ **Completed Construction Projects**
 - ❖ PCC Buildings QQ & RR – Electrical Program, Dyer Hall, Lifetime Learning Center
 - ❖ District Wide Security Monitoring System

Scheduled Maintenance Projects

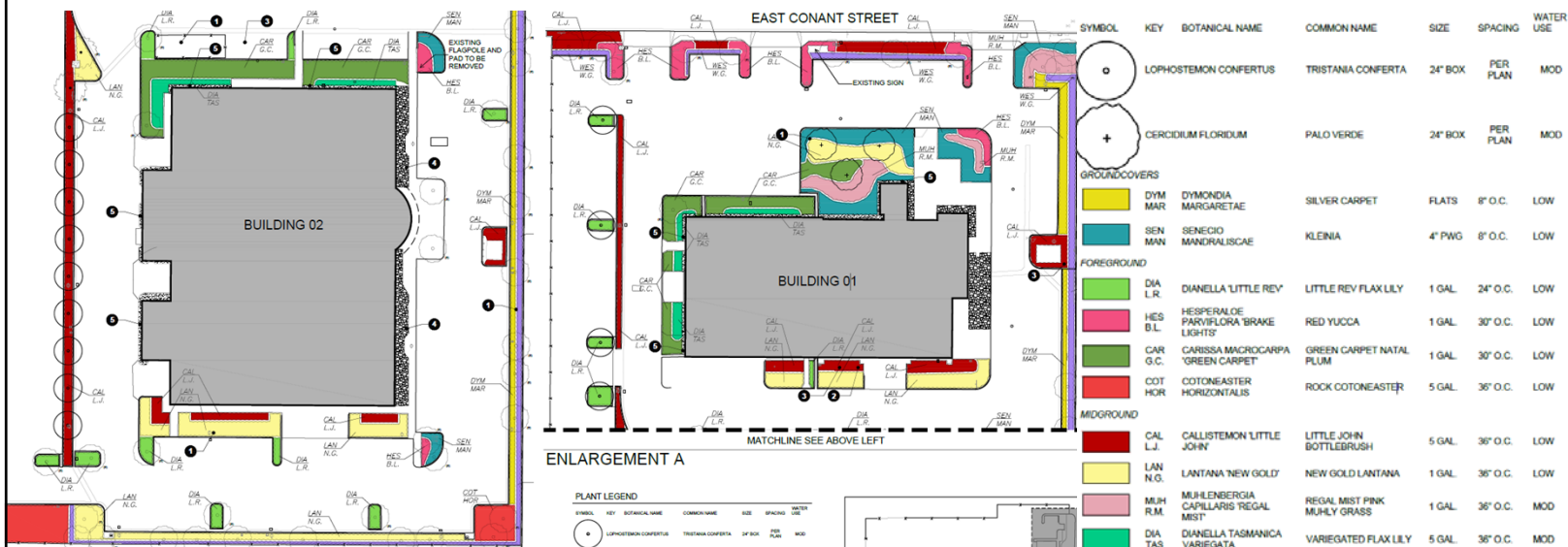
Fiscal Year 2015/16 \$3,089,434 (State Funds & Measure LB)



- Water conservation projects
 - Awarded design contract to HPI.
 - PCC Campus Water Conservation Project
 - ◆ Southwest of Campus, Bldg. HH and Bldg. II.
 - ◆ Notice to proceed issued January 2018.
 - ◆ Estimated construction completion Summer 2018.

Scheduled Maintenance Projects

Fiscal Year 2015/16 \$3,089,434 (State Funds & Measure LB)



- Water conservation projects (continued)
 - LAC South Campus Water Conservation Project
 - ◆ Bldg. O1 and Bldg. O2 – Landscape and reclaimed water.
 - ◆ Bldg. Z – Reclaimed water only.
 - ◆ Currently in bid process. Bids due on 8/16/18.

Scheduled Maintenance Projects

Fiscal Year 2016/17 \$2,846,905 (State Funds and Measure LB)

- District-Wide Project for ADA Upgrades
 - PCC - Westberg and White (Design Consultant) preparing design documents to address deficiencies as identified in the CASp survey for the PCC campus.
 - ◆ Phase 1 Site Package - Notice to proceed issued 3/28/18 to Axiom Group. Project to be complete in Spring 2019.
 - ◆ Phase 2 Building Package – Notice to proceed issued 7/24/18 to CalCo Construction Services, Inc. Project to be complete by Summer 2019.
 - LAC - DLR Group (Design Consultant) preparing design documents to address deficiencies as identified in the CASp survey for the LAC. Schematic Design package was submitted July 2018. Currently under review to proceed with design documents with a site and building package.
- Door Lockdown Project
 - Phase I
 - ◆ Retrofitted doors in Buildings A, C, D, L, T, V, AA, BB, DD, EE, GG and LL to allow for lockdown from within room - *Complete*
 - Phase II
 - ◆ PCC Campus - Retrofit doors in Buildings HH, GG, CC, JJ, II, and MM.
 - ◆ LAC Campus - Retrofit doors in Buildings A, T, and CDC.
 - ◆ Notice to proceed issued to EJ Enterprises. Work to be complete by Fall 2018.



Scheduled Maintenance Projects

Fiscal Year 2017/18 \$639,456 (State Funds Only)

- Project Facilities Proposals (PFP) Submitted on September 13, 2017
- High Voltage Electrical Improvements
 - Replacement of oil switch and transformer at Bldg. G.
 - Replacement of oil switch at PCC main distribution.
 - P2S Engineering (Design Consultant) preparing design documents.
- Lighting Inverter Replacement - *Complete*
 - Scope includes lighting inverter replacement at LAC Building T and PCC Building JJ.



District Wide Energy Projects

Prop 39 Years 3, 4, & 5 – 2015-18 Projects \$1,878,957

- LED Lighting Retrofits, Buildings T, HH and O2
 - Approximately 207,140 kWh/yr. in energy savings and \$30,263 in cost savings.
 - Notice to Proceed issued to Baker Electric, June 2017.
 - All overhead work complete.
 - Building O2 – 95% complete
 - Building T – 95% complete
 - Building HH – 50% complete

District Wide Energy Projects Integrated Energy Master Plan (IEMP)

- DLR Group was selected to create the Energy Master Plan.
- IEMP to include a clear path towards compliance with the Governor's Executive Orders.
 - District-Wide Net Zero Goal.
- IEMP will be integrated with the 2041 Facilities Master Plan & future designs.
 - Integrate IEMP to District Design Standards.
- Assessment and Planning Services
 - Central Plant/Building Analysis – load analysis.
 - Design recommendations
 - ◆ District-Wide net zero goal
 - ◆ On-site energy generation
 - ◆ Water Management
- Project started Summer 2017, estimated completion Summer 2018.
- Total project budget = \$249,789

Campus Improvement Projects

Fiscal Year 2016/17 Campus Improvements (Measures E & LB)

- Facility Advisory Committee Approved 2/22/17
 - Building HH – Artificial Turf for courtyard (\$100,000) – *Complete*
 - Building T – Room 1200 Replace carpet and paint (\$30,000) – *Complete*
 - Building R – Thermostat for gym heater (\$60,000) – *Complete*

- Facility Advisory Committee Approved 4/19/17
 - Baseball field - Scoreboard replacement (\$130,000) – *Complete*
 - Bldg. MM - Trailer removal (\$20,000) - *Complete*
 - Bldg. L – Replace basement Vinyl floor (\$13,000) - *Complete*
 - CDC (LAC) – Replace carpet in classrooms and offices (\$16,000) - *Complete*

Campus Improvement Projects

Fiscal Year 2017/18 Campus Improvements (Measure LB)

- Facility Advisory Committee Approved 11/8/17
 - Building Q – Installation of glue down ceiling tiles for Q113 (\$13,000)
 - ◆ Soliciting proposals
 - Building MM – HVAC upgrade (\$65,000) – *Complete*
 - Building EE – Room 108 upgrade (\$50,000) – *Complete*
 - Building HH – Shade structure installation (\$20,000)
 - ◆ NTP issued to TSK Architects in July 2018. Currently in design.

Current Construction Projects

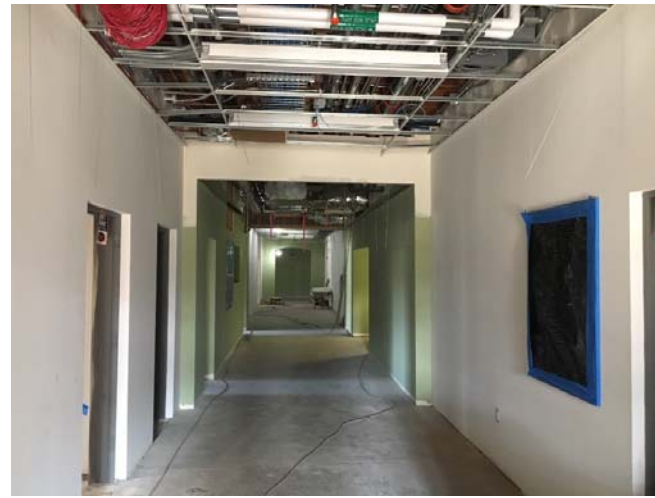
LAC Building D 1st and 2nd Floors – Science Labs (Measure E)



- MSP Architects – Design Firm, Soltek Pacific Construction – Completion Contractor.
- Renovate 16,000 square feet of 1st floor and 2,573 square feet of 2nd floor for new Science Labs.
- Project started September 2016, new estimated construction completion Fall 2018.
- LBCC issued termination letter on 5/22/17 to TB Penick & Sons. Finalized agreement with Western Surety Company to move project forward in November 2017. Soltek was issued NTP on 12/4/17.
- Currently working on finish and completion items. First floor classrooms will be occupied in the Fall 2017. Second floor work to begin in Fall 2018.
- Total project budget = \$14,635,024

Current Construction Projects

LAC Building P – English Studies (Measures E and LB)



- Steinberg Architects – Design Firm, A&B Construction – Contractor.
- Occupants moved to swing space in Buildings M and N.
- Project will address ADA, classrooms, offices and MEP systems.
- Currently working on MEP finishes, flooring, landscape and hardscape.
- Construction started February 2017, estimated completion Spring 2019.
- Total project budget = \$11,015,941

Current Construction Projects

LAC Building J – Auditorium (Measures E & LB)



- SVA Architects – Design Firm, Novus Construction – Contractor.
- Renovate 37,878 GSF Auditorium, originally built in 1956.
- Adding 14,119 GSF onto northwest corner for additional classrooms, offices, storage and elevator.
- Upgrading structural, accessibility and fire/life safety to current codes.
- Currently working demolition, structural upgrades and MEP infrastructure.
- Notice to Proceed issued on January 16, 2018.
- Estimated completion Fall 2019.
- Total project budget = \$29,021,602

Current Design Projects

LAC Kinesiology Labs and Aquatic Center (Measures E & LB)



- Design contract awarded to Westberg and White, Spring 2017.
- Design for renovation of Outdoor Kinesiology Labs, which includes a softball field, soccer fields, sand volleyball courts, tennis courts and associated support facilities and infrastructure.
- Design also includes construction of a new Aquatic Center, which includes 50 meter pool and support building of approximately 15,000 sq. ft. to provide showers, locker rooms, storage, pool equipment and office spaces. Addressed ADA access issues, lighting and parking.
- Currently in the Construction Document Design Phase.
- Anticipated construction start Spring 2019.
- Total project budget = \$44,238,099

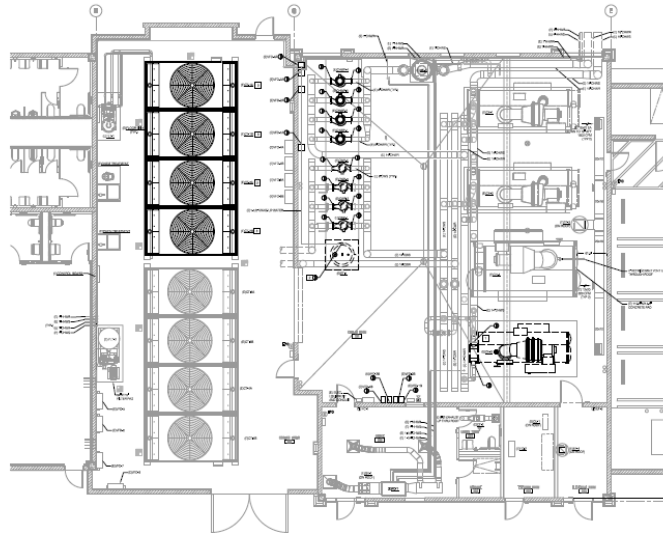
Current Design Projects

LAC Building M – Multi-Disciplinary Classroom (Measures E & LB & Prop. 51 State Funding)



- First State funded project utilizing the Design-Build delivery method.
- GKK Works selected to prepare bridging design documents.
- Project requires demolition of the existing Buildings M and N.
- New construction of a 3 story building of 81,970 GSF to include classrooms and offices.
- This building will house Language Arts, Foreign Language, Computer and Office Studies.
- Preliminary document package submitted to State Chancellor's office for approval on 3/1/18.
- Design-Build Entity to be selected Fall 2018. Aiming to award DBE at 8/21 BOT meeting.
- Anticipated construction start Fall 2019, construction completion Fall 2022.
- Total project budget = \$70,096,798 (State funded = \$27,760,000)

LAC Building X – Central Plant Expansion
(Measure LB)



- P2S Engineering selected to prepare design documents.
- Project will consist of expanding the capacity of the existing Central Plant to accommodate upcoming growth shown in the 2041 Facilities Master Plan.
- Currently in Construction Document design phase.
- Anticipated construction start Fall 2019, construction completion Spring 2020.
- Total project budget = \$6,190,506

Current Design Projects

PCC Building MM – Construction Phase I (Measures E & LB & Prop. 51 State Funding)



- State budget approved funding for Preliminary Plans only during fiscal year 17/18.
- HPI Architecture selected to prepare design documents.
- Project will consist of renovating West Wing of MM which houses the HVAC and Carpentry departments. Project will include demolishing the former Alternative Fuels section.
- Preliminary document package submitted to State Chancellors office for approval on 3/1/18.
- Anticipated construction start Fall 2019, construction completion Fall 2020.
- Total project budget = \$17,665,877 (State funded = \$7,096,729)

PCC Parking Structure – P2 (Measure LB)



- HPI Architecture selected to prepare bridging design documents. Design-Build delivery method.
- Parking structure to include solar panels on top floor.
- Parking structure to serve 500-600 vehicles for long term student and staff parking needs.
- To be located in parking lots 5, 6 and 8.
- McCarty Building Companies, Inc. to be the Design-Build Entity. Anticipated approval at June 26, 2018 Board of Trustees Meeting.
- Total project budget = \$23,862,144.04

Completed Construction Projects

PCC Buildings QQ & RR – Electrical Program Relocation, Dyer Hall, Lifetime Learning Center Relocation (Measure E)



- HPI Architects – Design Firm, R.C. Construction – Contractor.
- Building QQ (24,454 GSF) renovated for 5 Electrical labs, 3 classrooms, 9 faculty offices, Lecture Hall and Lifetime Learning Center.
- Building RR (7,667 GSF) renovated for the Electrical program's robotics labs with 2 electrical labs, 1 electrical machinery room and 1 workroom.
- Notice of Completion awarded at April 24, 2018 Board of Trustees meeting.
- Total construction cost \$12,235,495.

Completed Construction Projects

District Wide Security Monitoring System
(Measures E & LB)

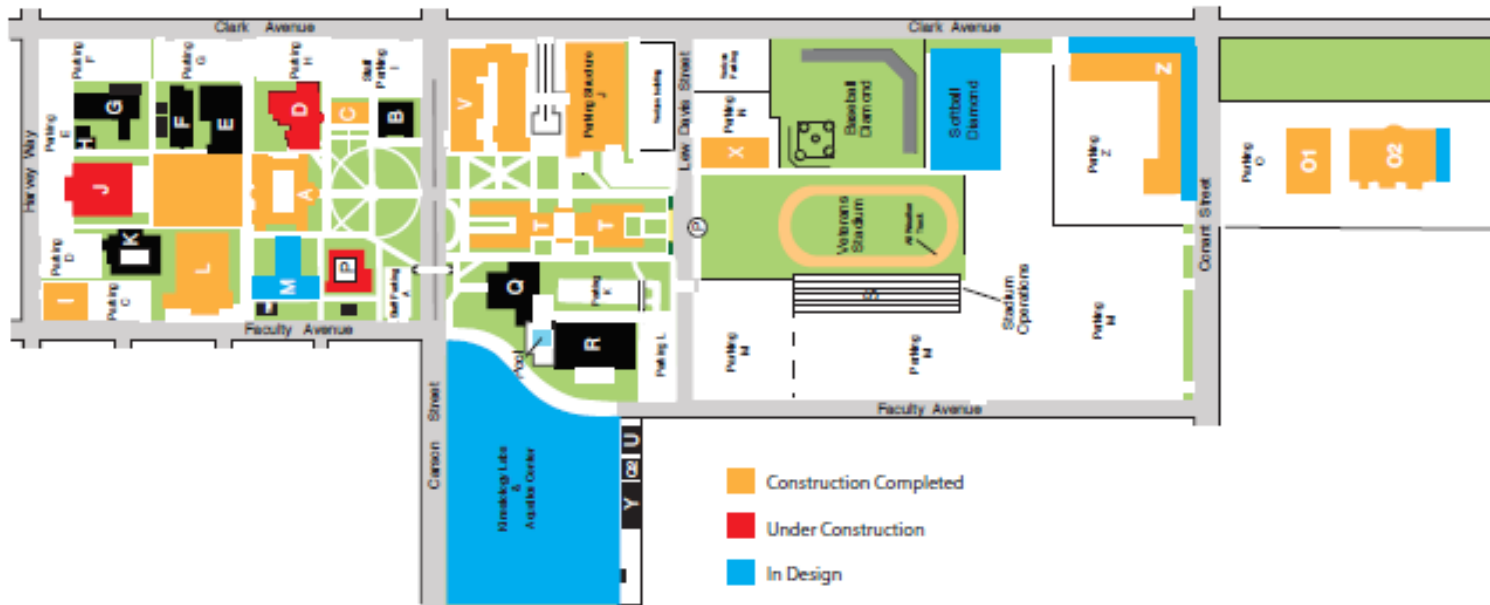
LAC Campus

Red = Facial recognition
Green = Camera coverage



- P2S Engineering – Design Firm, Pars Arvin – Contractor.
- 600 Cameras installed at PCC and LAC.
- Long Beach Police can view cameras in an emergency through Video Management System.
- Notice of Completion awarded at May 22, 2018 Board of Trustees meeting.
- Total construction cost \$2,627,091.

Liberal Arts Campus Site Plan



liberal arts

Pacific Coast Campus Site Plan





LONG BEACH CITY COLLEGE

QUESTIONS & ANSWERS