

LBCC Bond Program Master Schedule

Status as of October 1, 2019

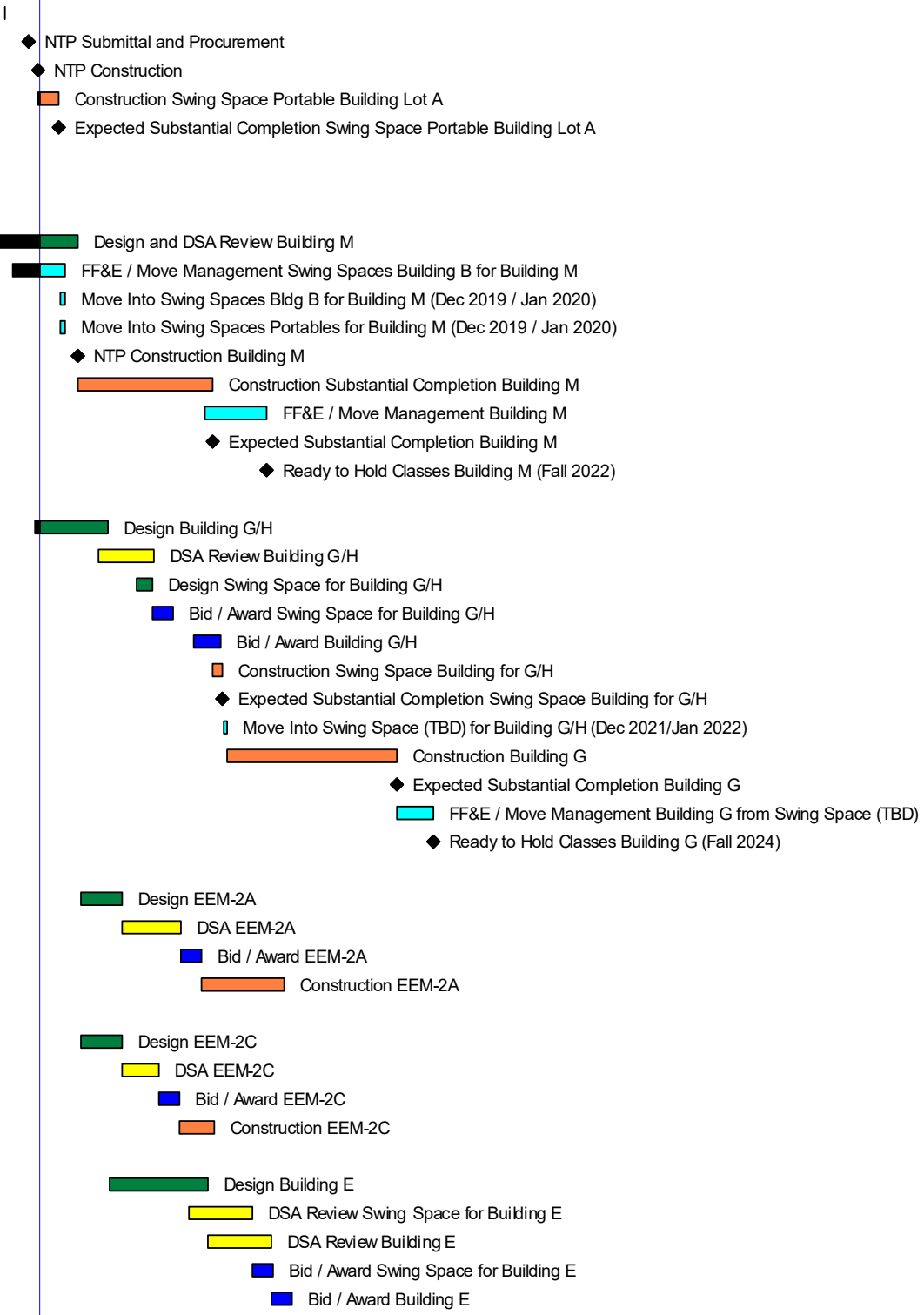
| Activity Name | At Completion Duration | Start | Finish | 2019 | 2020 | 2021 | 2022 | 2023 | 2024 | 2025 | 2026 | 2027 | 2028 | 2029 | 2030 | 2031 | 2032 | 2033 | 2034 | 2035 | 2036 | |
|---|------------------------|-------------|-------------|------|------|------|------|------|------|------|------|------|------|------|------|------|------|------|------|------|------|---|
| | | | | Q | Q | Q | Q | Q | Q | Q | Q | Q | Q | Q | Q | Q | Q | Q | Q | Q | Q | Q |
| Long Beach Community College Bond Program Schedule - October 1, 2019 | | | | | | | | | | | | | | | | | | | | | | |
| Liberal Arts Campus | | | | | | | | | | | | | | | | | | | | | | |
| Building J - Auditorium | | | | | | | | | | | | | | | | | | | | | | |
| Design Swing Space for Building J | 516 | 01-Oct-15 A | 28-Feb-17 A | | | | | | | | | | | | | | | | | | | |
| Design Building J | 145 | 01-Nov-15 A | 24-Mar-16 A | | | | | | | | | | | | | | | | | | | |
| DSA Building J | 398 | 03-Sep-16 A | 06-Oct-17 A | | | | | | | | | | | | | | | | | | | |
| Bid / Award Building J | 89 | 07-Oct-17 A | 04-Jan-18 A | | | | | | | | | | | | | | | | | | | |
| Construction Building J (Spring 2018 - Fall 2019) | 700 | 16-Jan-18 A | 16-Dec-19 | | | | | | | | | | | | | | | | | | | |
| FF&E / Move Management from Building J from Public Theater & Building FF | 246 | 18-Oct-19 | 19-Jun-20 | | | | | | | | | | | | | | | | | | | |
| Expected Substantial Completion Building J | 0 | | 16-Dec-19 | | | | | | | | | | | | | | | | | | | |
| Ready to Hold Classes Building J (Fall 2020) | 0 | | 19-Jun-20 | | | | | | | | | | | | | | | | | | | |
| Kinesiology Labs & Aquatics Center | | | | | | | | | | | | | | | | | | | | | | |
| Pre-Design Kinesiology Labs & Aquatic Center | 271 | 01-Sep-16 A | 30-May-17 A | | | | | | | | | | | | | | | | | | | |
| Design Kinesiology Labs & Aquatic Center | 615 | 01-Jun-17 A | 06-Feb-19 A | | | | | | | | | | | | | | | | | | | |
| DSA Knesiology Labs & Aquatic Center | 241 | 29-Jan-19 A | 26-Sep-19 A | | | | | | | | | | | | | | | | | | | |
| Bid / Award Kinesiology Labs & Aquatic Center | 131 | 27-Sep-19 A | 04-Feb-20 | | | | | | | | | | | | | | | | | | | |
| NTP Kinesiology Labs & Aquatic Center | 0 | 14-Feb-20 | | | | | | | | | | | | | | | | | | | | |
| Phase 2 Softball Complex | 360 | 14-Feb-20 | 07-Feb-21 | | | | | | | | | | | | | | | | | | | |
| Phase 1 Aquatic Complex & North Fields | 530 | 14-Feb-20 | 27-Jul-21 | | | | | | | | | | | | | | | | | | | |
| Phase 3 Parking Lot etc. | 45 | 08-Feb-21 | 24-Mar-21 | | | | | | | | | | | | | | | | | | | |
| FF&E / Move Management Kinesiology Labs & Aquatic Center | 254 | 29-Apr-21 | 08-Jan-22 | | | | | | | | | | | | | | | | | | | |
| Final Completion Kinesiology Labs & Aquatic Center | 0 | | 26-Aug-21 | | | | | | | | | | | | | | | | | | | |
| Ready to Hold Classes Kinesiology Labs & Aquatic Center (Spring 2022) | 0 | | 08-Jan-22 | | | | | | | | | | | | | | | | | | | |
| Building X - Central Plant Expansion | | | | | | | | | | | | | | | | | | | | | | |
| Design | 413 | 23-Jan-18 A | 12-Mar-19 A | | | | | | | | | | | | | | | | | | | |
| DSA LAC Central Plant | 146 | 13-Apr-19 A | 06-Sep-19 A | | | | | | | | | | | | | | | | | | | |
| Bid / Award LAC Central Plant | 106 | 19-Aug-19 A | 02-Dec-19 | | | | | | | | | | | | | | | | | | | |
| Construction LAC Central Plant | 130 | 10-Dec-19 | 17-Apr-20 | | | | | | | | | | | | | | | | | | | |
| Expected Substantial Completion | 0 | | 17-Apr-20 | | | | | | | | | | | | | | | | | | | |
| LAC Site Barrier Removal | | | | | | | | | | | | | | | | | | | | | | |
| Design Campus Improvements | 867 | 12-Sep-17 A | 26-Jan-20 | | | | | | | | | | | | | | | | | | | |
| DSA Review LAC Site Barrier Removal | 183 | 27-Jan-20 | 27-Jul-20 | | | | | | | | | | | | | | | | | | | |
| Bid / Award LAC Site Barrier Removal | 91 | 28-Jul-20 | 26-Oct-20 | | | | | | | | | | | | | | | | | | | |
| Construction LAC Site Barrier Removal | 518 | 03-Nov-20 | 04-Apr-22 | | | | | | | | | | | | | | | | | | | |
| Expected Substantial Completion | 0 | | 04-Apr-22 | | | | | | | | | | | | | | | | | | | |
| LAC Building Barrier Removal | | | | | | | | | | | | | | | | | | | | | | |
| Design Campus Improvements | 895 | 12-Sep-17 A | 23-Feb-20 | | | | | | | | | | | | | | | | | | | |
| DSA Review LAC Building Barrier Removal | 182 | 24-Feb-20 | 23-Aug-20 | | | | | | | | | | | | | | | | | | | |
| Bid / Award LAC Building Barrier Removal | 90 | 24-Aug-20 | 21-Nov-20 | | | | | | | | | | | | | | | | | | | |
| Construction LAC Building Barrier Removal | 518 | 10-Dec-20 | 11-May-22 | | | | | | | | | | | | | | | | | | | |
| Expected Substantial Completion | 0 | | 11-May-22 | | | | | | | | | | | | | | | | | | | |
| Building B Tenant Improvement (Building M Swing Space) | | | | | | | | | | | | | | | | | | | | | | |
| Bid / Award Building B Swing Space for Building M | 128 | 03-Mar-19 A | 09-Jul-19 A | | | | | | | | | | | | | | | | | | | |
| NTP Construction | 0 | 15-Jul-19 A | | | | | | | | | | | | | | | | | | | | |
| Construction Swing Space Building B Renovation | 85 | 15-Jul-19 A | 07-Oct-19 | | | | | | | | | | | | | | | | | | | |
| Expected Substantial Completion Swing Space Building B Renovation | 0 | | 07-Oct-19 | | | | | | | | | | | | | | | | | | | |

■ PRE ■ Bid / Award ■ CONST ■ Actual
■ DESIGN ■ DSA ■ FF&E ◆ Milestone

LBCC Bond Program Master Schedule

Status as of October 1, 2019

| Activity Name | At Completion Duration | Start | Finish | 2019 | 2020 | 2021 | 2022 | 2023 | 2024 | 2025 | 2026 | 2027 | 2028 | 2029 | 2030 | 2031 | 2032 | 2033 | 2034 | 2035 | 2036 | |
|---|------------------------|-------------|-------------|------|------|------|------|------|------|------|------|------|------|------|------|------|------|------|------|------|------|---|
| | | | | Q | Q | Q | Q | Q | Q | Q | Q | Q | Q | Q | Q | Q | Q | Q | Q | Q | Q | Q |
| Lot A Portable Buildings (Building M Swing Space) | | | | | | | | | | | | | | | | | | | | | | |
| Bid / Award Portable Building Lot A | 1 | 01-May-19 A | 01-May-19 A | | | | | | | | | | | | | | | | | | | |
| NTP Submittal and Procurement | 0 | 12-Aug-19 A | | | | | | | | | | | | | | | | | | | | |
| NTP Construction | 0 | 23-Sep-19 A | | | | | | | | | | | | | | | | | | | | |
| Construction Swing Space Portable Building Lot A | 90 | 23-Sep-19 A | 21-Dec-19 | | | | | | | | | | | | | | | | | | | |
| Expected Substantial Completion Swing Space Portable Building Lot A | 0 | | 21-Dec-19 | | | | | | | | | | | | | | | | | | | |
| Building M - Liberal Arts | | | | | | | | | | | | | | | | | | | | | | |
| Pre-Design Building M | 329 | 01-Aug-17 A | 26-Jun-18 A | | | | | | | | | | | | | | | | | | | |
| Award DBE Building M | 120 | 27-Jun-18 A | 25-Oct-18 A | | | | | | | | | | | | | | | | | | | |
| Design and DSA Review Building M | 495 | 05-Nov-18 A | 13-Mar-20 | | | | | | | | | | | | | | | | | | | |
| FF&E / Move Management Swing Spaces Building B for Building M | 229 | 06-Jun-19 A | 20-Jan-20 | | | | | | | | | | | | | | | | | | | |
| Move Into Swing Spaces Bldg B for Building M (Dec 2019 / Jan 2020) | 20 | 01-Jan-20* | 20-Jan-20 | | | | | | | | | | | | | | | | | | | |
| Move Into Swing Spaces Portables for Building M (Dec 2019 / Jan 2020) | 20 | 01-Jan-20* | 20-Jan-20 | | | | | | | | | | | | | | | | | | | |
| NTP Construction Building M | 0 | 14-Mar-20 | | | | | | | | | | | | | | | | | | | | |
| Construction Substantial Completion Building M | 596 | 14-Mar-20 | 30-Oct-21 | | | | | | | | | | | | | | | | | | | |
| FF&E / Move Management Building M | 273 | 01-Oct-21 | 01-Jul-22 | | | | | | | | | | | | | | | | | | | |
| Expected Substantial Completion Building M | 0 | | 30-Oct-21 | | | | | | | | | | | | | | | | | | | |
| Ready to Hold Classes Building M (Fall 2022) | 0 | | 01-Jul-22 | | | | | | | | | | | | | | | | | | | |
| Building G - Music & Theater Arts | | | | | | | | | | | | | | | | | | | | | | |
| Design Building G/H | 323 | 11-Sep-19 A | 29-Jul-20 | | | | | | | | | | | | | | | | | | | |
| DSA Review Building G/H | 243 | 18-Jun-20 | 15-Feb-21 | | | | | | | | | | | | | | | | | | | |
| Design Swing Space for Building G/H | 67 | 04-Dec-20 | 08-Feb-21 | | | | | | | | | | | | | | | | | | | |
| Bid / Award Swing Space for Building G/H | 89 | 09-Feb-21 | 08-May-21 | | | | | | | | | | | | | | | | | | | |
| Bid / Award Building G/H | 122 | 07-Aug-21 | 06-Dec-21 | | | | | | | | | | | | | | | | | | | |
| Construction Swing Space Building for G/H | 40 | 04-Nov-21 | 13-Dec-21 | | | | | | | | | | | | | | | | | | | |
| Expected Substantial Completion Swing Space Building for G/H | 0 | | 13-Dec-21 | | | | | | | | | | | | | | | | | | | |
| Move Into Swing Space (TBD) for Building G/H (Dec 2021/Jan 2022) | 15 | 20-Dec-21 | 03-Jan-22 | | | | | | | | | | | | | | | | | | | |
| Construction Building G | 750 | 04-Jan-22 | 23-Jan-24 | | | | | | | | | | | | | | | | | | | |
| Expected Substantial Completion Building G | 0 | | 23-Jan-24 | | | | | | | | | | | | | | | | | | | |
| FF&E / Move Management Building G from Swing Space (TBD) | 158 | 24-Jan-24 | 29-Jun-24 | | | | | | | | | | | | | | | | | | | |
| Ready to Hold Classes Building G (Fall 2024) | 0 | | 29-Jun-24 | | | | | | | | | | | | | | | | | | | |
| EEM-2A - Energy and Portable Water Reductions - LAC (TBD) | | | | | | | | | | | | | | | | | | | | | | |
| Design EEM-2A | 180 | 01-Apr-20* | 27-Sep-20 | | | | | | | | | | | | | | | | | | | |
| DSA EEM-2A | 260 | 28-Sep-20 | 14-Jun-21 | | | | | | | | | | | | | | | | | | | |
| Bid / Award EEM-2A | 90 | 15-Jun-21 | 12-Sep-21 | | | | | | | | | | | | | | | | | | | |
| Construction EEM-2A | 365 | 13-Sep-21 | 12-Sep-22 | | | | | | | | | | | | | | | | | | | |
| EEM-2C - Thermal Storage Strategy - Bldg P Attic (TBD) | | | | | | | | | | | | | | | | | | | | | | |
| Design EEM-2C | 180 | 01-Apr-20* | 27-Sep-20 | | | | | | | | | | | | | | | | | | | |
| DSA EEM-2C | 160 | 28-Sep-20 | 06-Mar-21 | | | | | | | | | | | | | | | | | | | |
| Bid / Award EEM-2C | 90 | 07-Mar-21 | 04-Jun-21 | | | | | | | | | | | | | | | | | | | |
| Construction EEM-2C | 160 | 05-Jun-21 | 11-Nov-21 | | | | | | | | | | | | | | | | | | | |
| Building E - College Center | | | | | | | | | | | | | | | | | | | | | | |
| Design Building E | 432 | 03-Aug-20 | 08-Oct-21 | | | | | | | | | | | | | | | | | | | |
| DSA Review Swing Space for Building E | 280 | 17-Jul-21 | 22-Apr-22 | | | | | | | | | | | | | | | | | | | |
| DSA Review Building E | 280 | 09-Oct-21 | 15-Jul-22 | | | | | | | | | | | | | | | | | | | |
| Bid / Award Swing Space for Building E | 93 | 23-Apr-22 | 24-Jul-22 | | | | | | | | | | | | | | | | | | | |
| Bid / Award Building E | 91 | 16-Jul-22 | 14-Oct-22 | | | | | | | | | | | | | | | | | | | |



■ PRE ■ Bid/Award ■ CONST ■ Actual
■ DESIGN ■ DSA ■ FF&E ◆ ◆ Milestone

LBCC Bond Program Master Schedule

Status as of October 1, 2019

| Activity Name | At Completion Duration | Start | Finish | 2019 | 2020 | 2021 | 2022 | 2023 | 2024 | 2025 | 2026 | 2027 | 2028 | 2029 | 2030 | 2031 | 2032 | 2033 | 2034 | 2035 | 2036 | | |
|---|------------------------|-------------|-------------|------|------|------|------|------|------|------|------|------|------|------|------|------|------|------|------|------|------|---|---|
| | | | | Q | Q | Q | Q | Q | Q | Q | Q | Q | Q | Q | Q | Q | Q | Q | Q | Q | Q | Q | Q |
| Building FF - Demo Fine Arts & Senior Center/Turnabout | | | | | | | | | | | | | | | | | | | | | | | |
| Design Building FF Demo & Turnabout | 189 | 01-Sep-22 | 08-Mar-23 | | | | | | | | | | | | | | | | | | | | |
| DSA Review Building FF | 280 | 09-Mar-23 | 13-Dec-23 | | | | | | | | | | | | | | | | | | | | |
| Bid / Award Building FF Demo & Turnabout | 86 | 14-Dec-23 | 08-Mar-24 | | | | | | | | | | | | | | | | | | | | |
| Construction Building FF Demo | 155 | 09-Mar-24 | 10-Aug-24 | | | | | | | | | | | | | | | | | | | | |
| PCC Walkways & Wayfinding | | | | | | | | | | | | | | | | | | | | | | | |
| PCC Walkways and Wayfindings | 8803 | 01-Jul-17 A | 06-Aug-41 | | | | | | | | | | | | | | | | | | | | |
| District Wide | | | | | | | | | | | | | | | | | | | | | | | |
| Joint Use Facility w/ LBUSD & CSULB #12 | | | | | | | | | | | | | | | | | | | | | | | |
| Joint Use w/ LBUSD & CSULB #12 | 1324 | 01-Aug-17 A | 16-Mar-21 | | | | | | | | | | | | | | | | | | | | |
| Energy/Water Conservation Projects | | | | | | | | | | | | | | | | | | | | | | | |
| Energy Water Conservation Projects | 9145 | 01-Jul-16 A | 14-Jul-41 | | | | | | | | | | | | | | | | | | | | |
| Districtwide Solar Projects | | | | | | | | | | | | | | | | | | | | | | | |
| Pre-Design, Criteria Documents, RFP | 378 | 21-Mar-19 A | 01-Apr-20 | | | | | | | | | | | | | | | | | | | | |
| Award Districtwide Solar | 40 | 02-Apr-20 | 11-May-20 | | | | | | | | | | | | | | | | | | | | |
| Design Districtwide Solar | 119 | 12-May-20 | 07-Sep-20 | | | | | | | | | | | | | | | | | | | | |
| DSA Districtwide Solar | 120 | 08-Sep-20 | 05-Jan-21 | | | | | | | | | | | | | | | | | | | | |
| NTP PCC Construction Solar | 0 | 06-Jan-21 | | | | | | | | | | | | | | | | | | | | | |
| PCC Construction Solar | 120 | 06-Jan-21 | 05-May-21 | | | | | | | | | | | | | | | | | | | | |
| NTP LAC Construction Solar | 0 | 22-Apr-21 | | | | | | | | | | | | | | | | | | | | | |
| LAC Construction Solar | 120 | 22-Apr-21 | 19-Aug-21 | | | | | | | | | | | | | | | | | | | | |
| Expected Substantial Completion PCC Solar | 0 | | 05-May-21 | | | | | | | | | | | | | | | | | | | | |
| Expected Substantial Completion LAC Solar | 0 | | 19-Aug-21 | | | | | | | | | | | | | | | | | | | | |
| SCE Charge Ready | | | | | | | | | | | | | | | | | | | | | | | |
| Design SCE Charge Ready | 113 | 01-Apr-19 A | 22-Jul-19 A | | | | | | | | | | | | | | | | | | | | |
| Easement SCE Charge Ready | 48 | 23-Jul-19 A | 09-Sep-19 A | | | | | | | | | | | | | | | | | | | | |
| DSA SCE Charge Ready | 67 | 09-Sep-19 A | 14-Nov-19 | | | | | | | | | | | | | | | | | | | | |
| Board Resolution of Intent to Approve Easement (September 11, 2019 Board) | 0 | 11-Sep-19 A | 11-Sep-19 A | | | | | | | | | | | | | | | | | | | | |
| Board Approve Easement (October 23, 2019 Board) | 1 | 23-Oct-19* | 23-Oct-19 | | | | | | | | | | | | | | | | | | | | |
| LAC Construction SCE Infrastructure SCE Charge Ready | 60 | 05-Dec-19 | 02-Feb-20 | | | | | | | | | | | | | | | | | | | | |
| PCC Construction Infrastructure SCE Charge Ready | 60 | 05-Dec-19 | 02-Feb-20 | | | | | | | | | | | | | | | | | | | | |
| LAC Construction Install ChargePoint SCE Charge Ready | 60 | 03-Feb-20 | 02-Apr-20 | | | | | | | | | | | | | | | | | | | | |
| PCC Construction Install ChargePoint SCE Charge Ready | 60 | 03-Feb-20 | 02-Apr-20 | | | | | | | | | | | | | | | | | | | | |
| Technology Refresh/Replacement | | | | | | | | | | | | | | | | | | | | | | | |
| Technology Refresh/Replacement | 8953 | 01-Feb-17 A | 06-Aug-41 | | | | | | | | | | | | | | | | | | | | |
| Enterprise Wide Computer System | | | | | | | | | | | | | | | | | | | | | | | |
| Enterprise Wide Computer System | 8953 | 01-Feb-17 A | 06-Aug-41 | | | | | | | | | | | | | | | | | | | | |
| Landscaping | | | | | | | | | | | | | | | | | | | | | | | |
| Landscaping | 8953 | 01-Feb-17 A | 06-Aug-41 | | | | | | | | | | | | | | | | | | | | |
| Infrastructure Projectss | | | | | | | | | | | | | | | | | | | | | | | |
| Infrastructure Projects | 8953 | 01-Feb-17 A | 06-Aug-41 | | | | | | | | | | | | | | | | | | | | |
| Minor Campus Improvements | | | | | | | | | | | | | | | | | | | | | | | |
| Minor Campus Improvements | 8953 | 01-Feb-17 A | 06-Aug-41 | | | | | | | | | | | | | | | | | | | | |
| Surface Parking Improvements | | | | | | | | | | | | | | | | | | | | | | | |
| Surface Parking Improvements | 8953 | 01-Feb-17 A | 06-Aug-41 | | | | | | | | | | | | | | | | | | | | |

- Design Building FF Demo & Turnabout
- DSA Review Building FF
- Bid / Award Building FF Demo & Turnabout
- Construction Building FF Demo

- Pre-Design, Criteria Documents, RFP
- Award Districtwide Solar
- Design Districtwide Solar
- DSA Districtwide Solar
- ◆ NTP PCC Construction Solar
- PCC Construction Solar
- ◆ NTP LAC Construction Solar
- LAC Construction Solar
- ◆ Expected Substantial Completion PCC Solar
- ◆ Expected Substantial Completion LAC Solar

- DSA SCE Charge Ready
- Board Approve Easement (October 23, 2019 Board)
- LAC Construction SCE Infrastructure SCE Charge Ready
- PCC Construction Infrastructure SCE Charge Ready
- LAC Construction Install ChargePoint SCE Charge Ready
- PCC Construction Install ChargePoint SCE Charge Ready

■ PRE ■ Bid /Award ■ CONST ■ Actual
■ DESIGN ■ DSA ■ FF&E ◆ Milestone