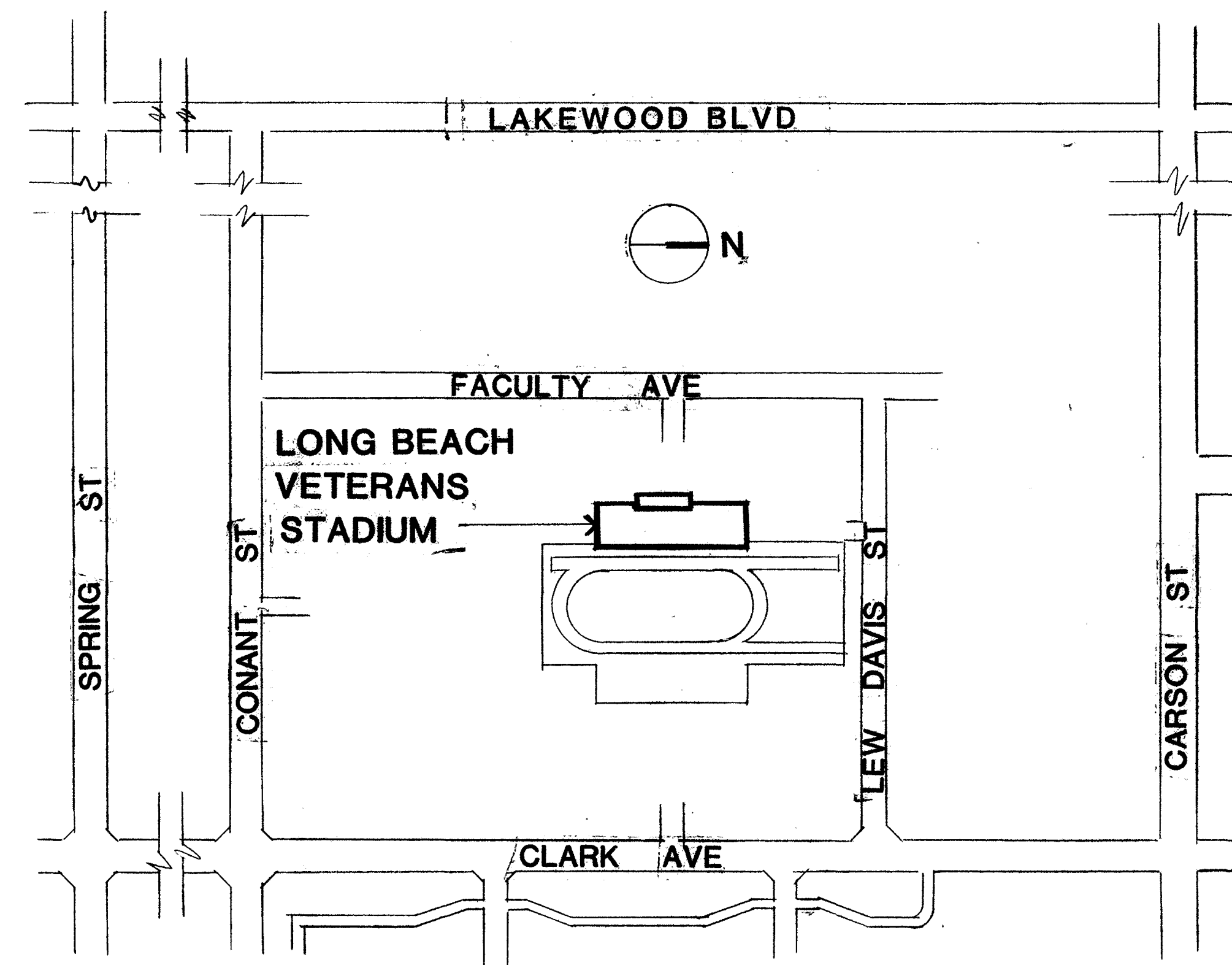


VICINITY MAP



Address: 4901 East Carson Street, Long Beach, CA 90808

SITE PLAN



SCOPE OF WORK

1. Demo and remove approximately (42) restroom partitions and accompanying mounting hardware located in the 3 Men's restrooms and 3 Women's restrooms inside the Stadium structure.
2. Contractor must repair and patch existing mounting holes with grout after original partitions have been removed.
3. Removed partitions should be replaced in the same configuration as originals with the district standard PHENOLIC-CORE TOILET COMPARTMENTS with finishes as specified.
 - This is a maintenance project to replace materials in kind, and is not a DSA project
4. Partition panel finish to match existing gray color in Men's restroom. Refer to SK-005 for color selections for partition panel finish in Women's restroom
5. Contractor to provide and install (42) district standard toilet paper dispenser (Bobrick Model B-2892) to replace existing dispensers.
6. Contractor to salvage existing sanitary waste receptacles and all other toilet room accessories unless otherwise noted to be removed in all restrooms and re-install sanitary waste receptacles and all other toilet room accessories unless otherwise noted to be removed on restroom partitions.
7. Adjacent areas must be protected. Materials to be protected include but are not limited to: nearby mirrors, sinks, toilets, urinals, lights, and windows.
8. Contractor to verify all partition and toilet paper dispenser quantities and dimensions prior to commencement of work.

SHEET INDEX

- | | |
|--------|---------------------------|
| SK-001 | TITLE SHEET |
| SK-002 | RESTROOM PLAN |
| SK-003 | ENLARGED RESTROOM PLAN |
| SK-004 | INTERIOR ELEVATIONS |
| SK-005 | RESTROOM PARTITION FINISH |



Project Title
Veterans Stadium
Restroom
Partition
Replacement

Revisions		
Number	Description	Date

Sheet Title

TITLE SHEET

Sheet Number

SK-001



NTS.
DIMENSIONS PROVIDED TO BE
CONFIRMED BY CONTRACTOR



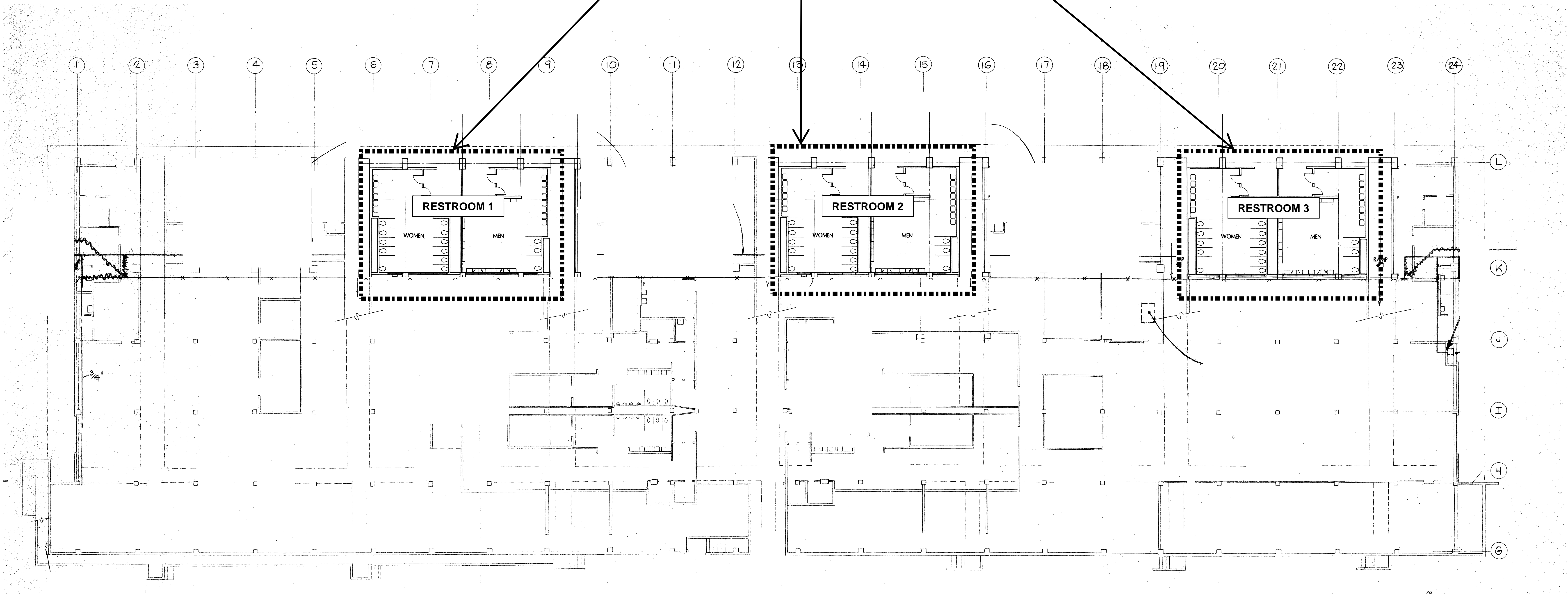
Project Title
Veterans Stadium
Restroom
Partition
Replacement

Revisions		
Number	Description	Date

Sheet Title
RESTROOM
PLAN

Sheet Number
SK-002

RESTROOMS IN SCOPE



NTS.
DIMENSIONS PROVIDED TO BE
CONFIRMED BY CONTRACTOR

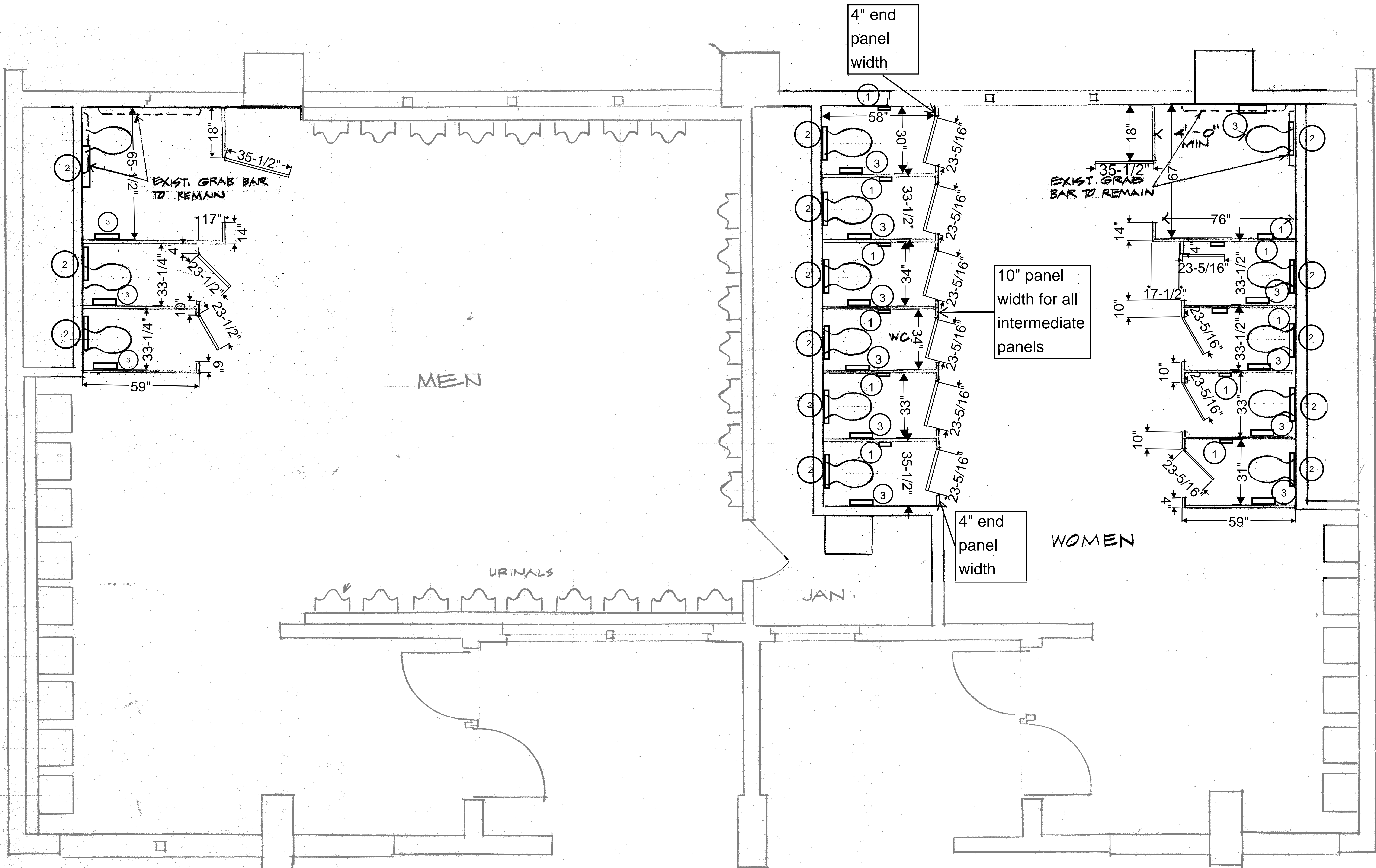
Revisions Number	Description	Date

Sheet Title

**ENLARGED
RESTROOM
PLAN**

Sheet Number

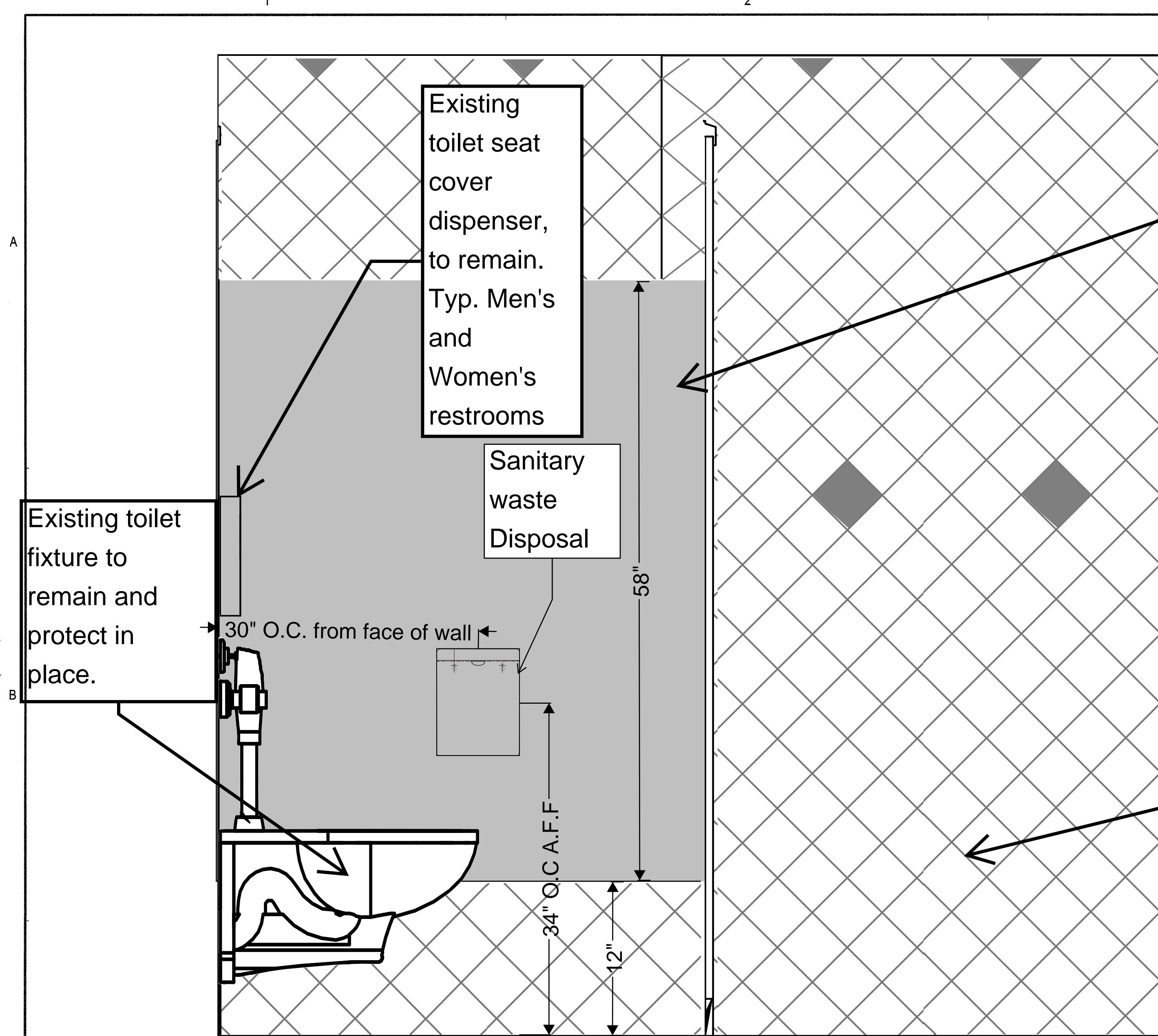
SK-003



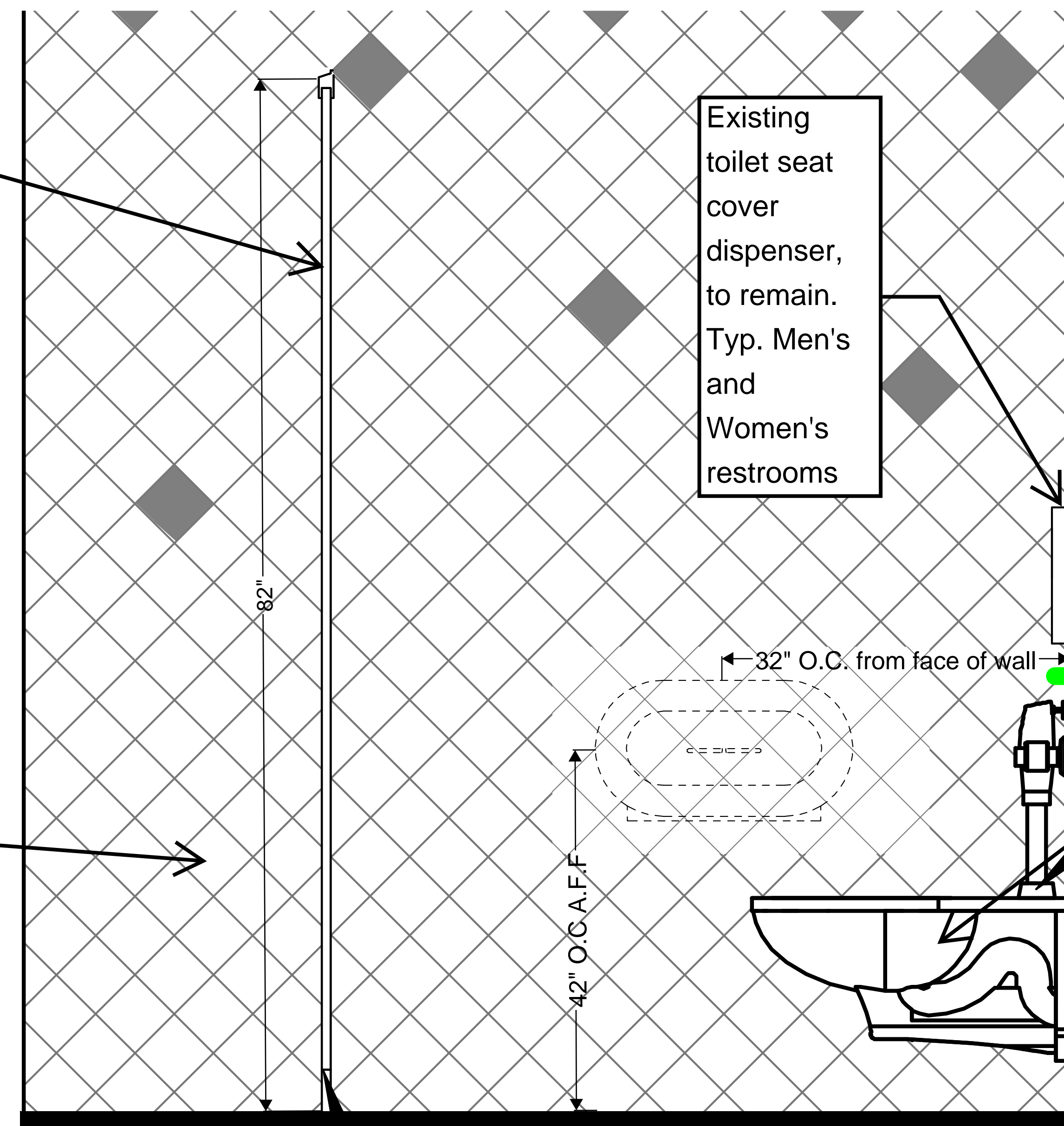
Notes

General Notes

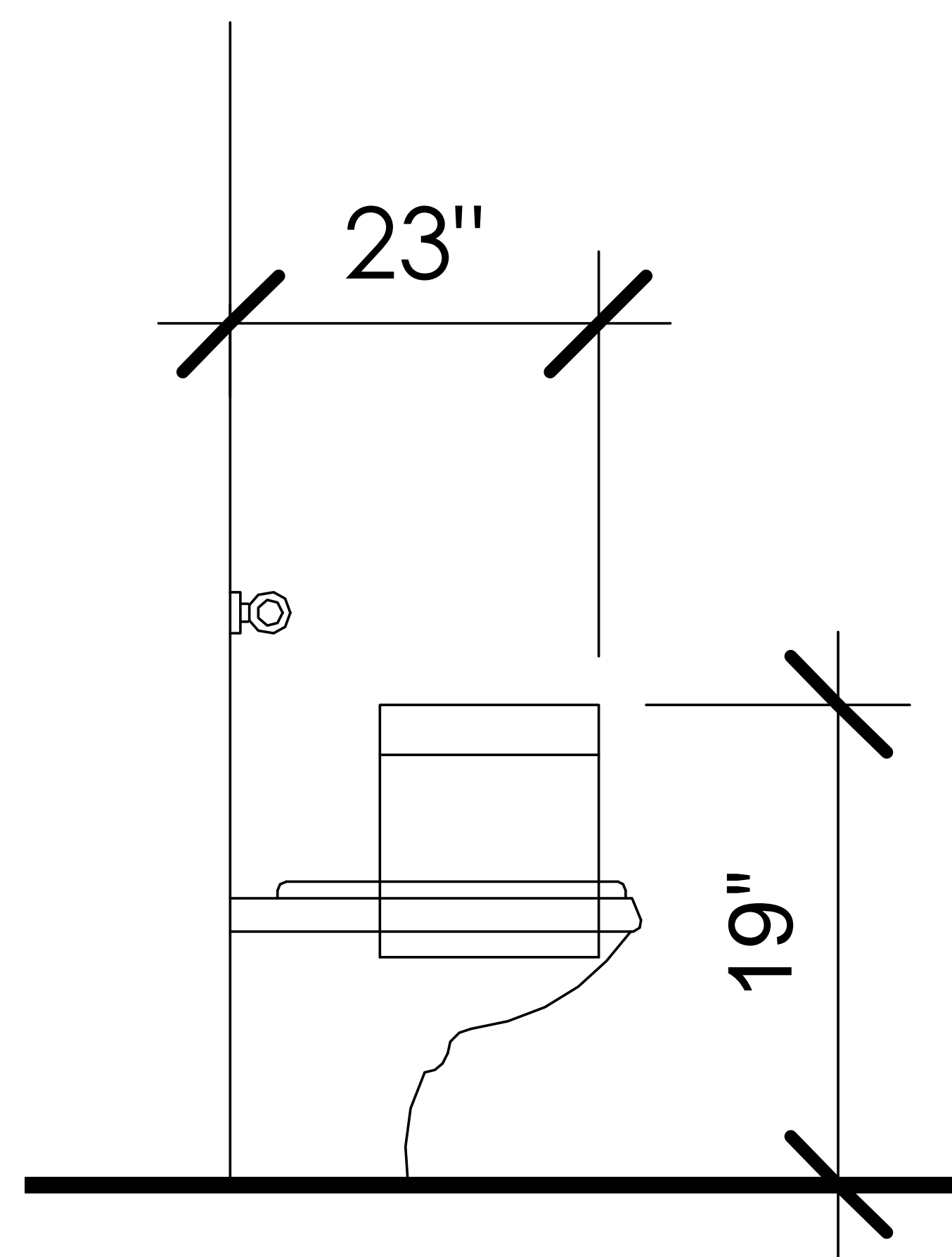
1. Total number of new compartments should match total number of existing compartments.
2. All plumbing fixtures are to remain in place and be protected unless otherwise noted.
3. All wall tiles in restrooms 1, 2 & 3 are identified as Lead Containing Surfaces (LCS), any disturbance to these tiles must be performed by a lead certified worker or licensed abatement contractor. See demolition section 3.1 in specifications 102113.17
4. Dimensions shown on the plans are of the existing partitions. All new door dimensions are to match specifications, adjust panels accordingly. Contractor to verify all dimensions in field



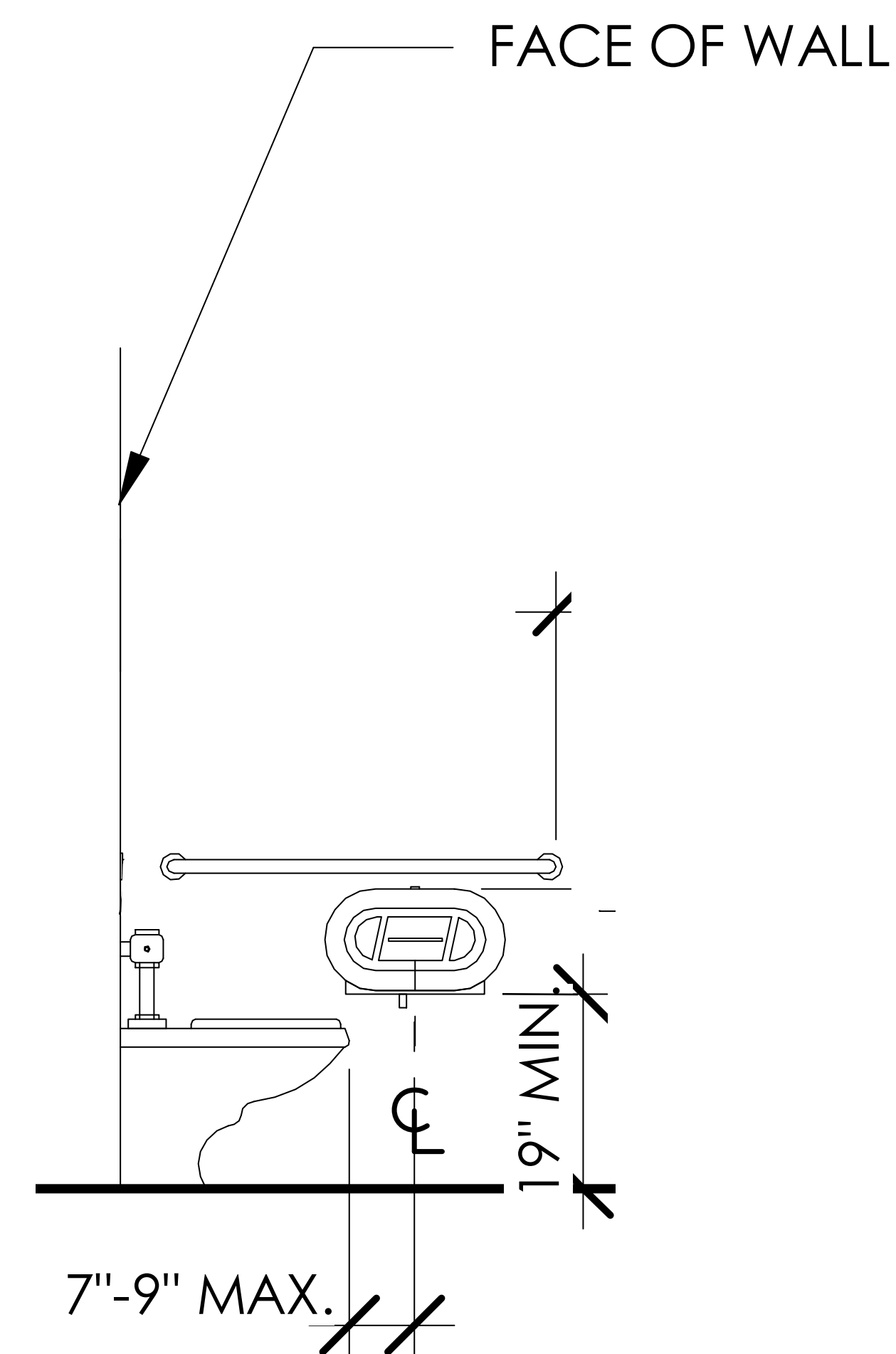
1 Sanitary Waste Disposal Mounting Detail - Standard Stalls



2 Toilet Paper Dispenser Mounting Detail - Standard Stalls



3 Sanitary Waste Disposal Mounting Detail - ADA Stalls



4 Toilet Paper Dispenser Mounting Detail - ADA Stalls

NTS.
DIMENSIONS PROVIDED TO BE
CONFIRMED BY CONTRACTOR



Project Title
**Veterans Stadium
Restroom
Partition
Replacement**

Revisions Number	Description	Date

Sheet Title

**INTERIOR
ELEVATIONS**

Sheet Number

SK-004

Weis /PHENOLIC Solid Plastic

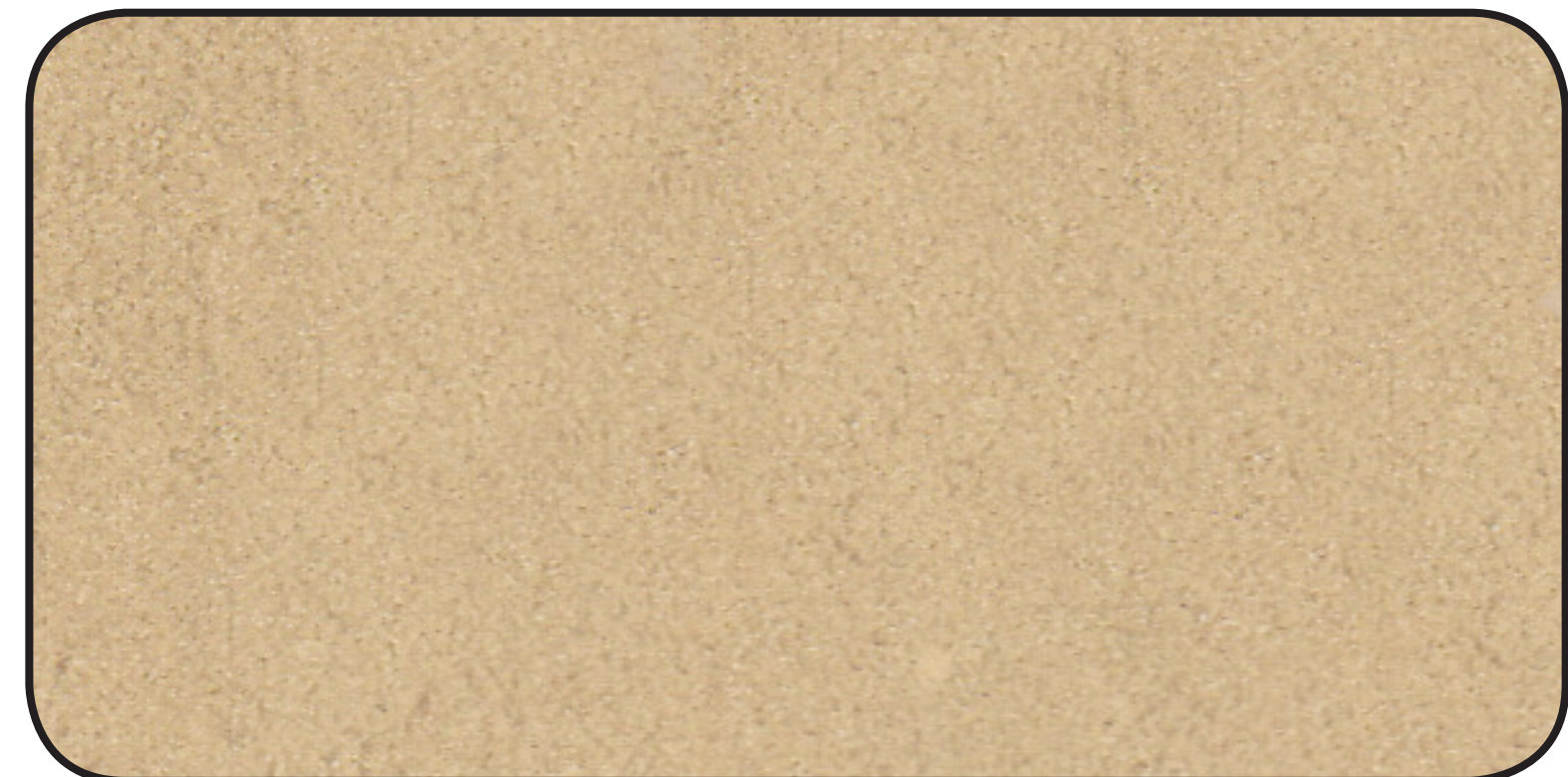


Project Title
Veterans Stadium
Restroom
Partition
Replacement

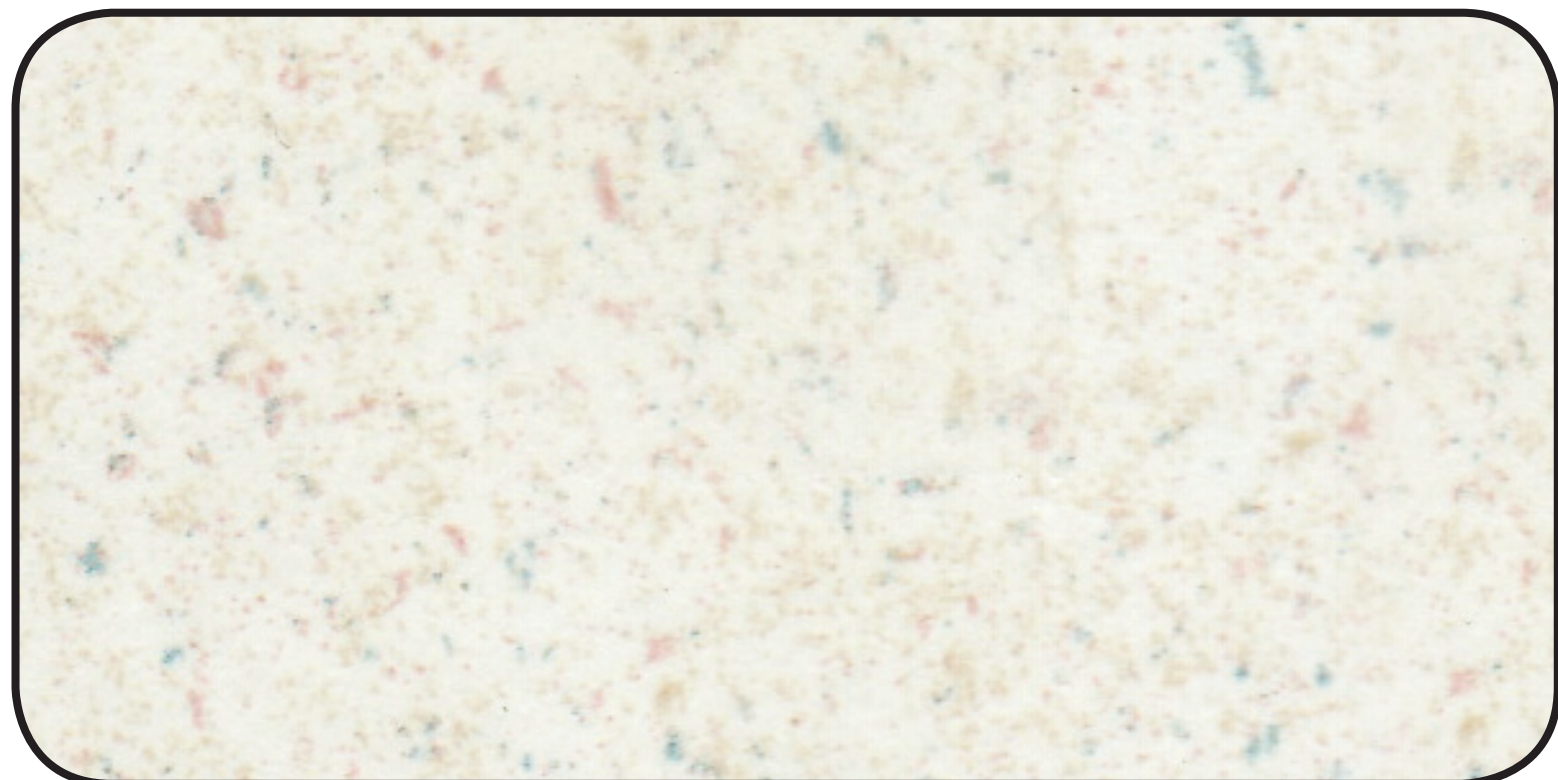
Revisions		
Number	Description	Date

Sheet Title
**WOMENS
RESTROOM
PARTITION
FINISH**

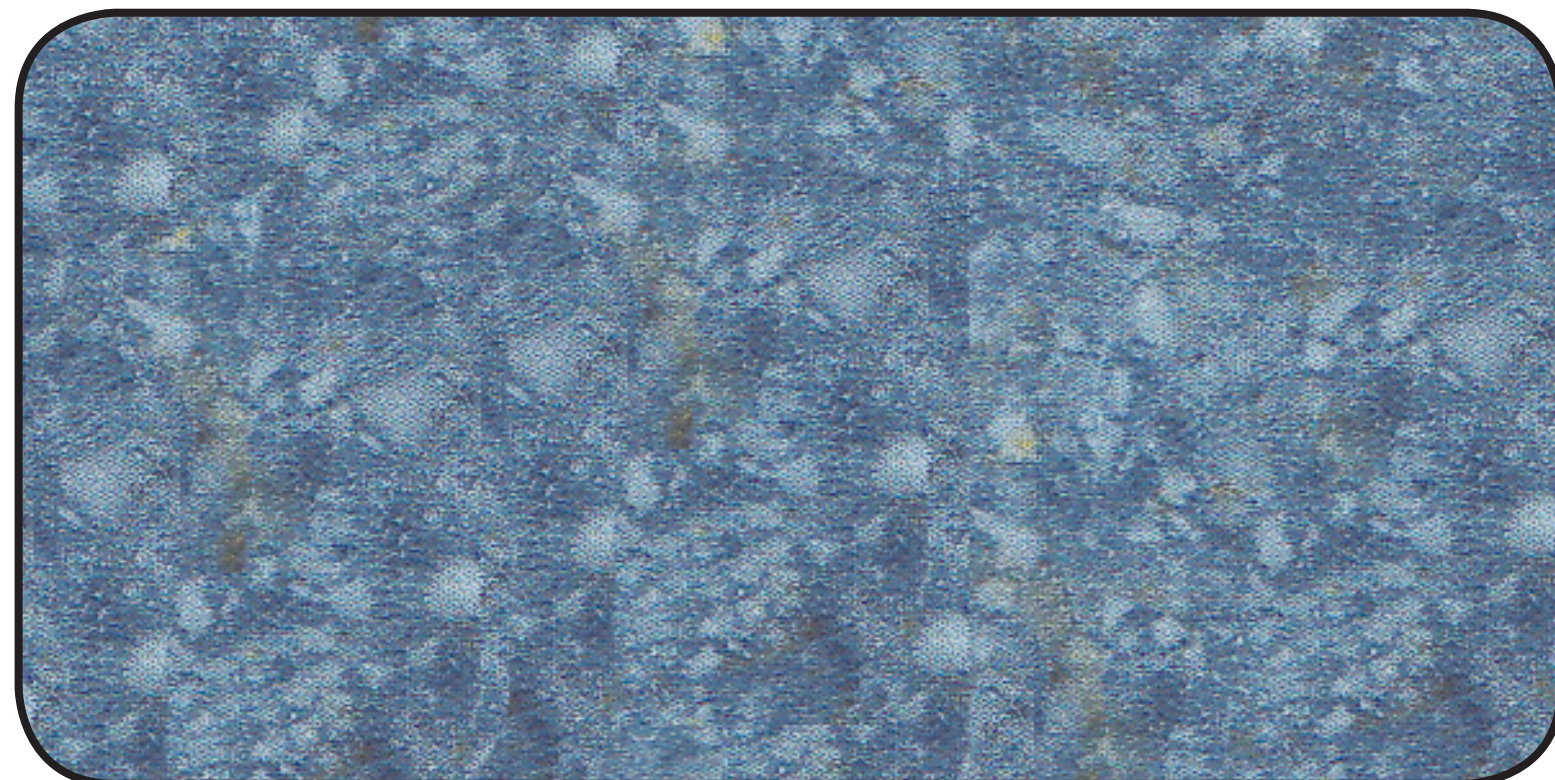
Sheet Number
SK-005



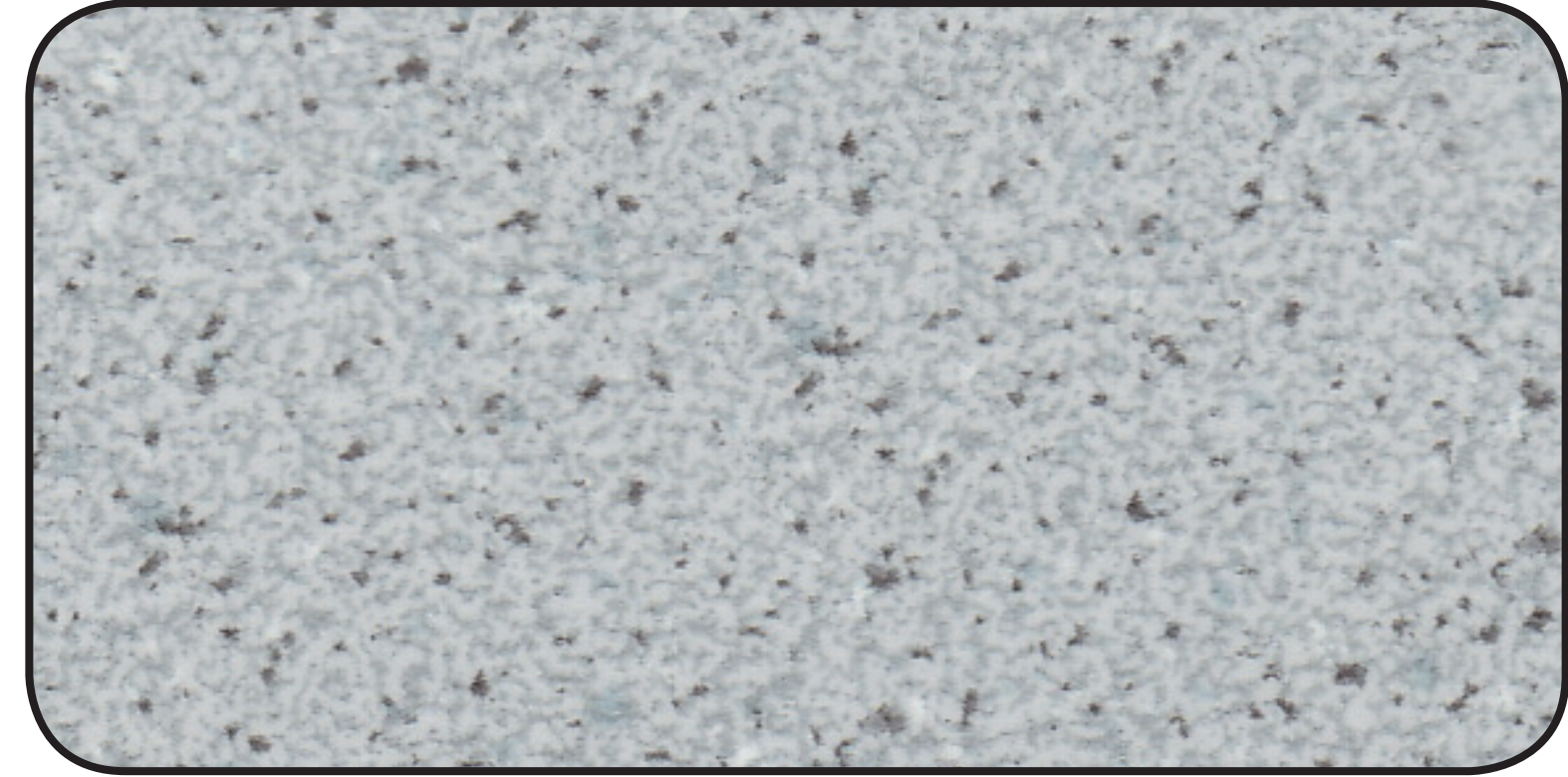
7813-58 CARDBOARD SOLIDZ



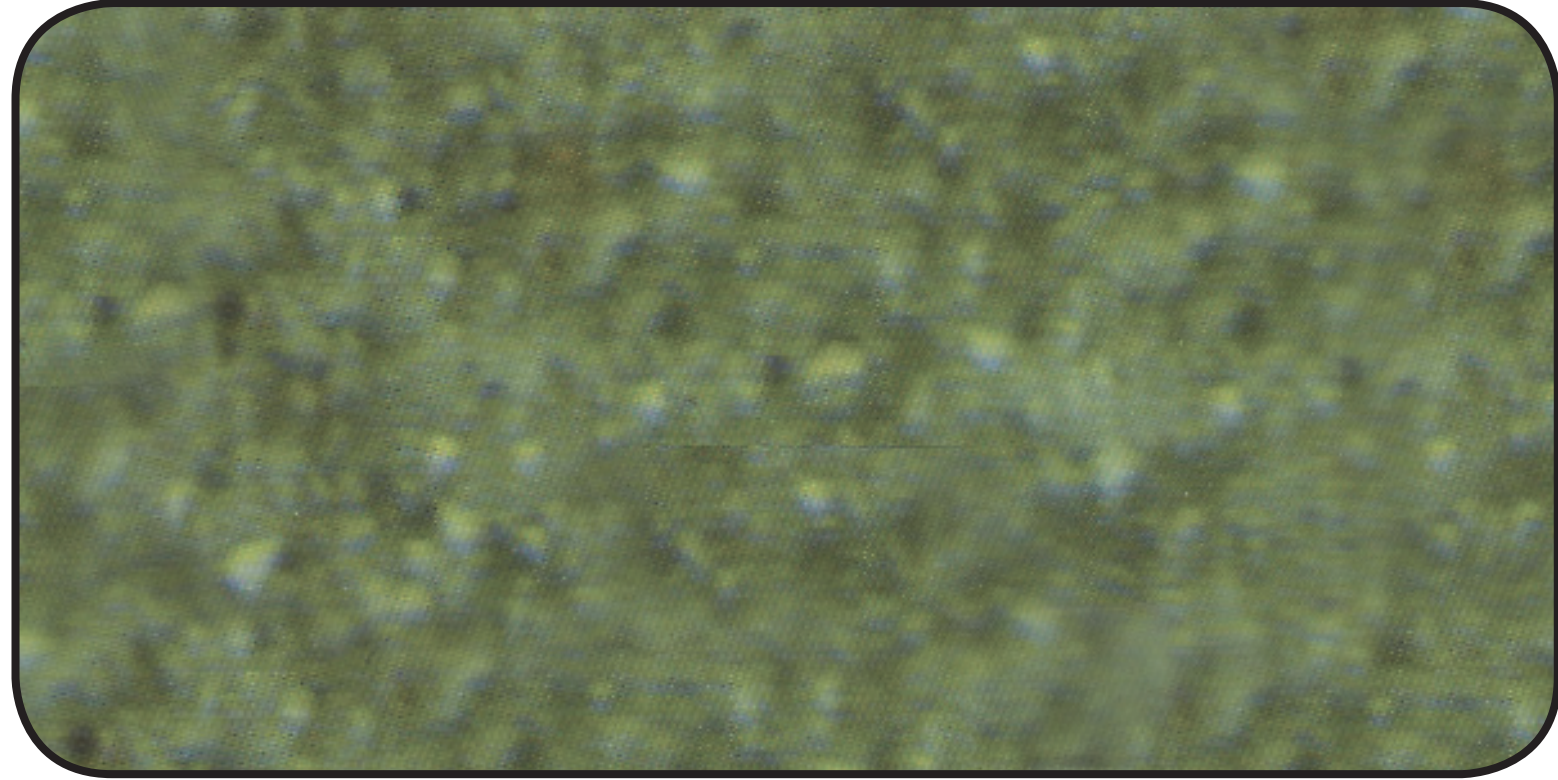
253-58 MULTIFLECK



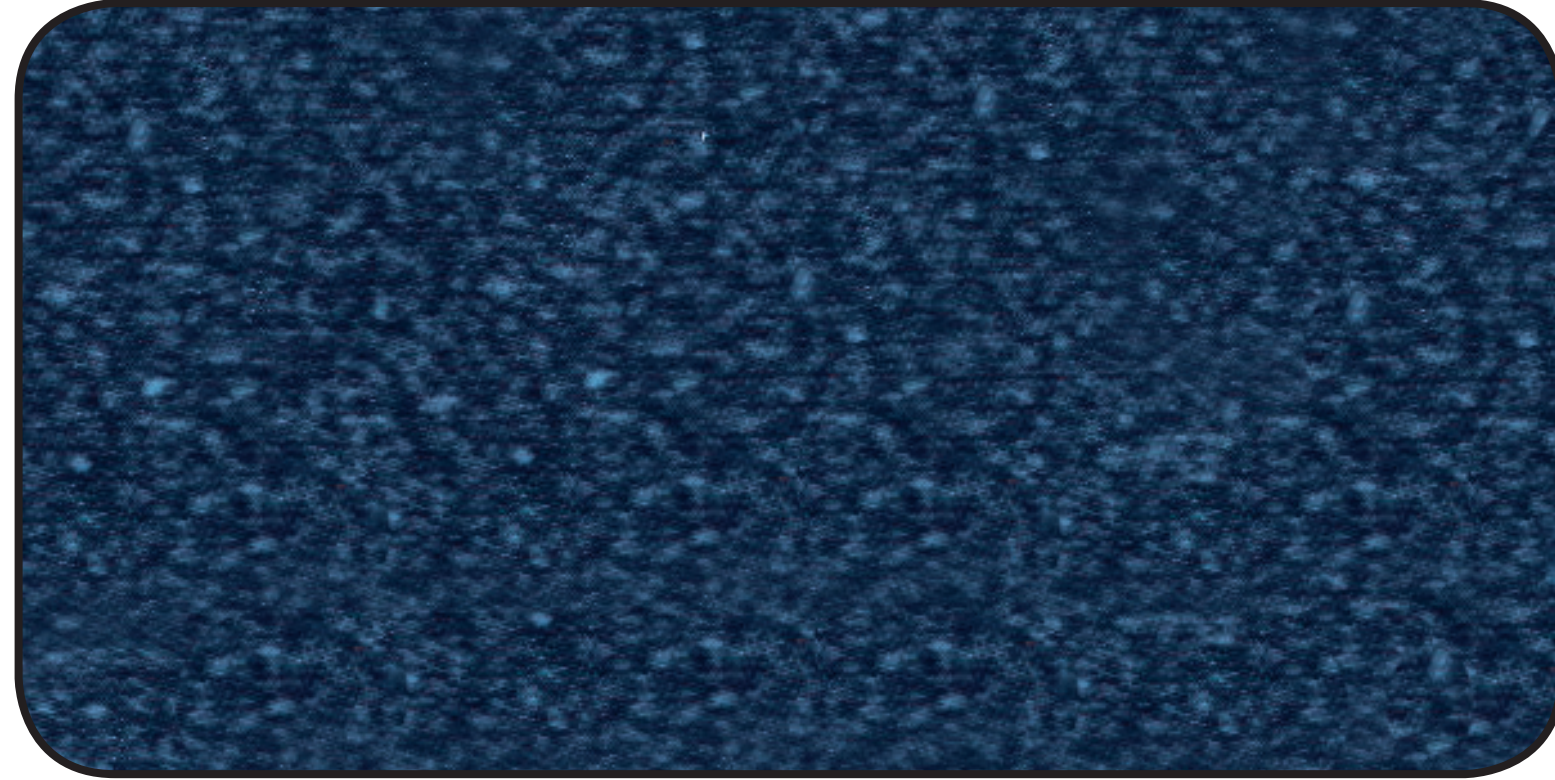
7498-58 LAPIS ENVISION



692-58 FOLKSTONE CELESTA



7499-58 JASPER ENVISION



7018-58 NAVY GRAFIX

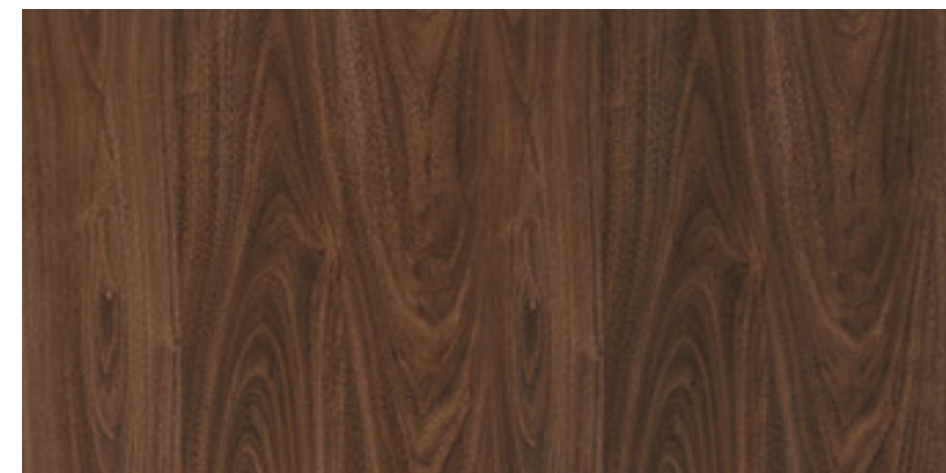


BUILDING VALUE SINCE 1906

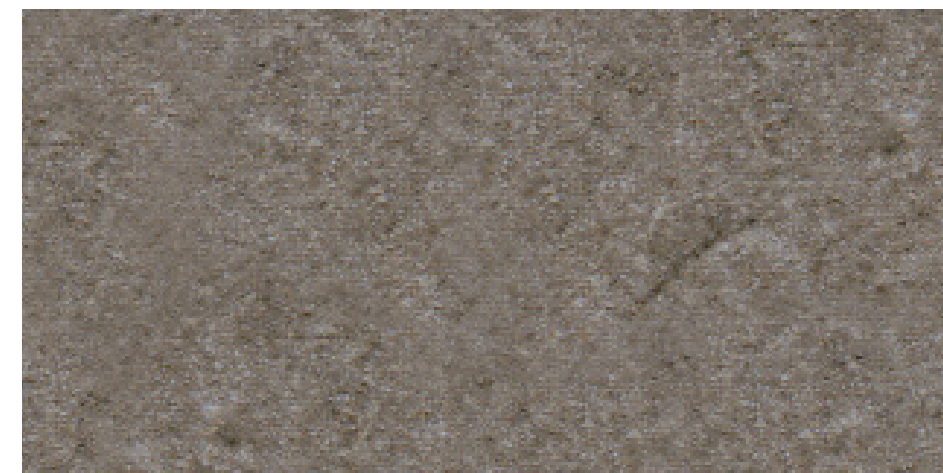


COMPACT GRADE LAMINATE (CGL) STANDARD COLORS & PATTERNS

Single Piece Panels Available Up To 5'



Thermo Walnut
6402-58



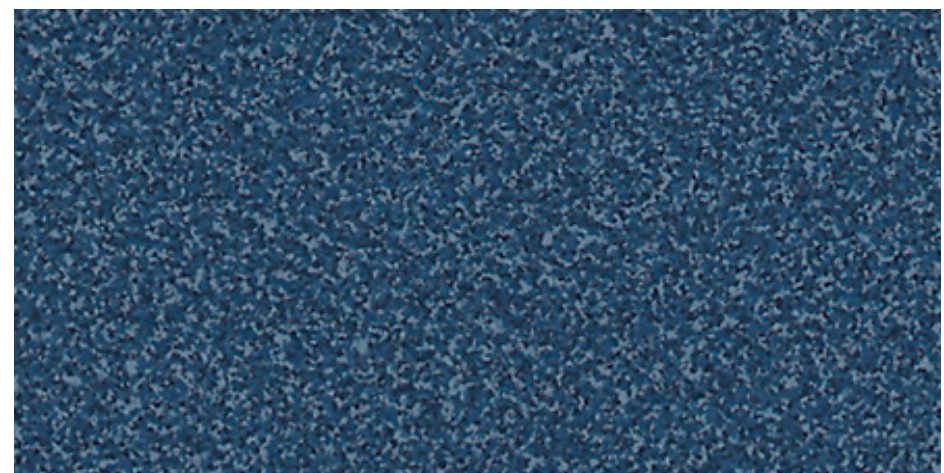
Evening Tigris
4674-60



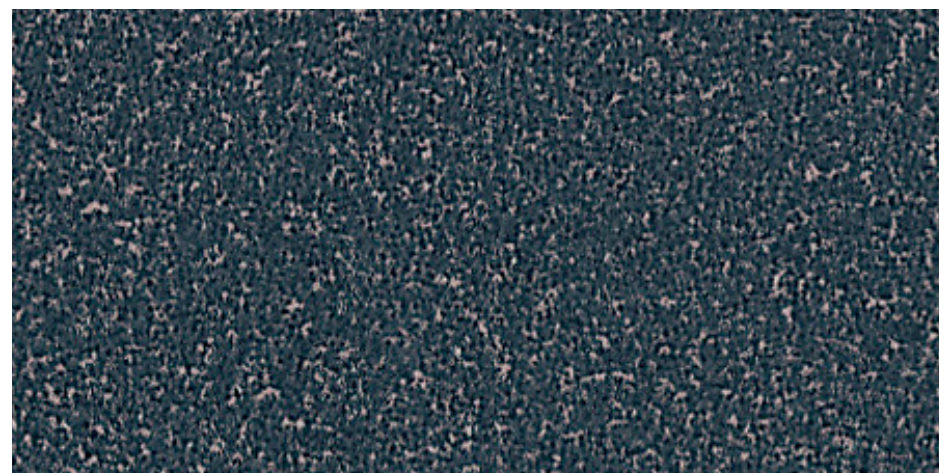
Slate Grey
D91-60



Citadel Warp
5882-58



Navy Grafix
7018-58



Graphite Grafix
515-58



NTS.
DIMENSIONS PROVIDED TO BE
CONFIRMED BY CONTRACTOR