



LONG BEACH COMMUNITY COLLEGE DISTRICT
CONTRACTS MANAGEMENT DEPARTMENT
4901 EAST CARSON STREET
LONG BEACH, CA 90808
Ph. (562) 938-4843

BID 22-009
WAREHOUSE RACK RECONFIGURATION PROJECT (BUILDINGS O1 & O2)
AT THE LIBERAL ARTS CAMPUS

ADDENDUM NO. 1

May 16, 2022

This Addendum forms a part of the Contract Documents and modifies the original Contract Documents. Acknowledge receipt of the Addendum on Section 1.2 of the Bid Proposal. Failure to do so may result in the bid being deemed non-responsive.

Note: *It is the responsibility of all bidders to notify all subcontractors from whom they request bids and from whom they accept bids of all changes contained in this addendum.*

ADDENDUM NO. 1 CONTENTS:

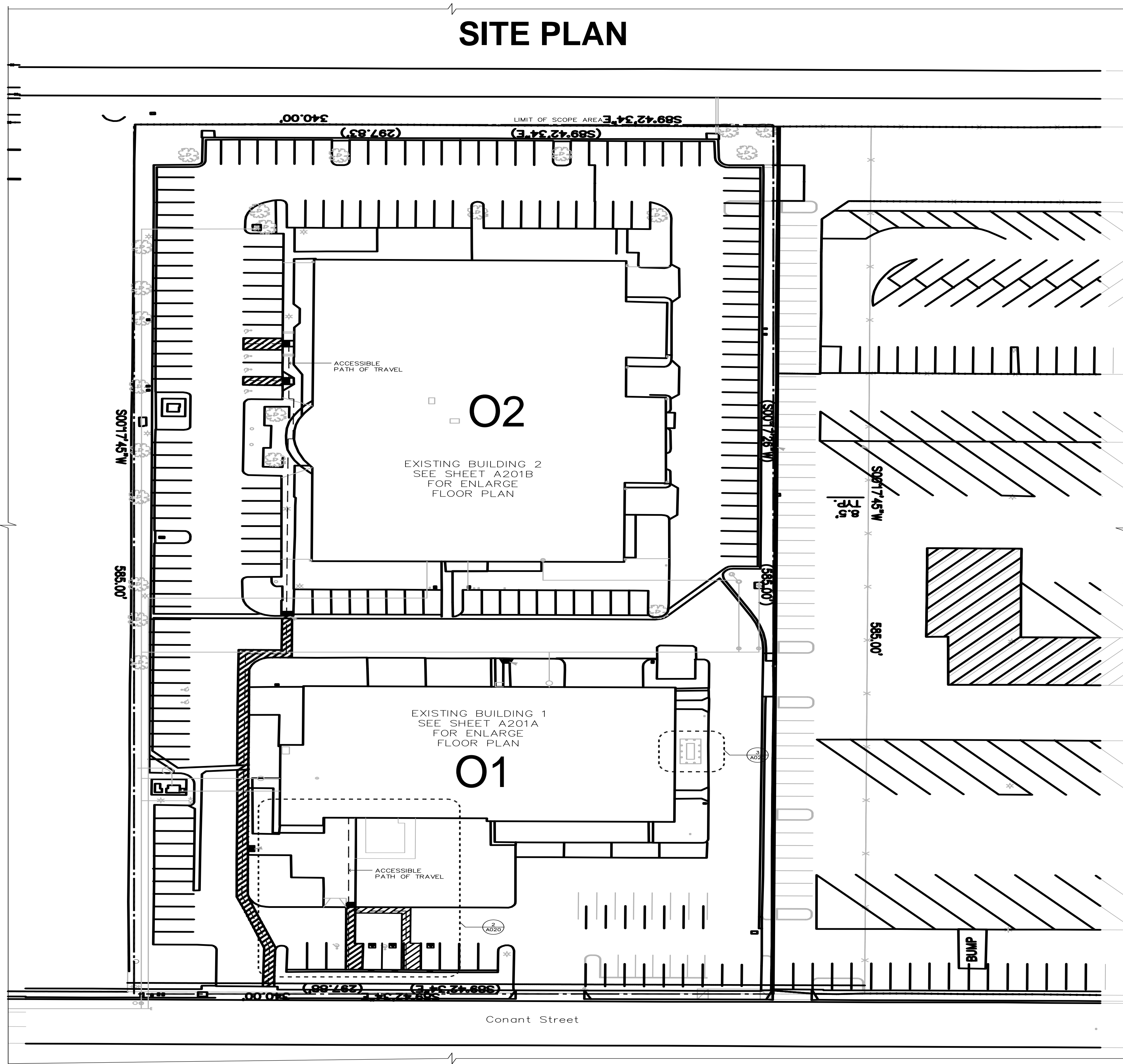
I. CHANGES TO DRAWINGS

New drawing set to supersede previous drawings.

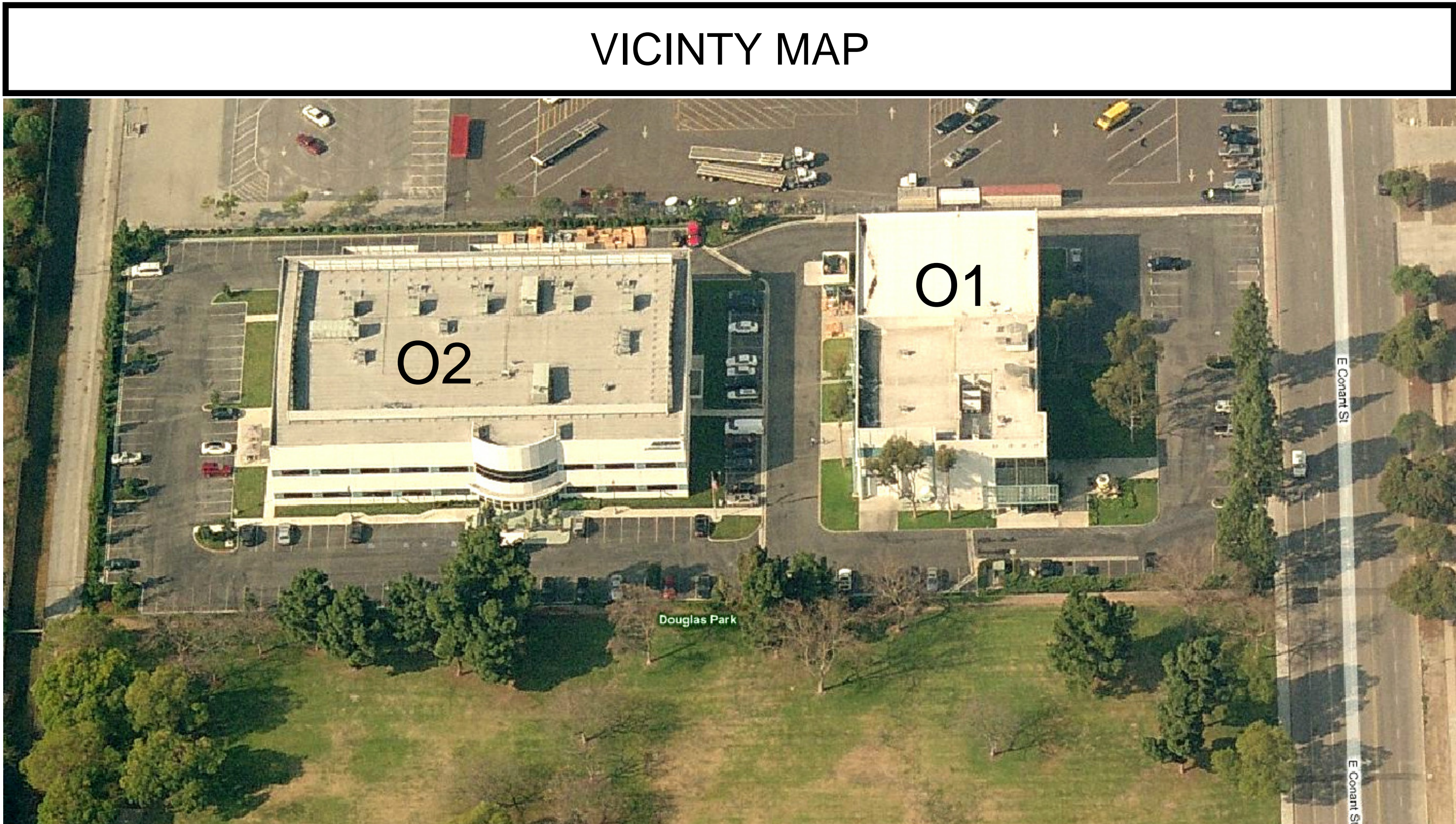
END OF ADDENDUM NO. 1

LONG BEACH COMMUNITY COLLEGE DISTRICT

Erica Bonilla,
Deputy Director, Purchasing and Contracts



- SCOPE OF WORK**
1. Relocate (E) pallet racks from warehouse in building O1 to warehouse in building O2 as specified in drawings.
 2. Patch AS NEEDED any holes left in concrete floor of building O1 upon removal of (E) pallet racks using traffic rated cement grout .
 3. Contractor to relocate (E) 2 fire extinguishers cabinets in Warehouse 2 of Building O2 (See plans and images).
 4. Contractor to relocate (E) light switches, intercept conductors at current location, conduit to be EMT concealed within the wall, conductor gauge to match existing. (See plans and images).
 5. Demo and dispose (E) vents and associated electrical conduit/switch from Warehouse 1 in Building O2 (See plans and images).
 6. Cut and cap indicated duct at funnel connection near ceiling in warehouse 1 of Building O2.
 7. Patch back and infill wall assembly where vents were demoed.
 8. Provide and install a total of (4) bays of new pallet racking with (4) vertical storage sections and (3) horizontal sections per selective rack system in warehouse 1 of building O2 as indicated in layout:
Uprights: 14 GA 42" X 240"
Beams" 3-3/4" X 96" 3 pin
 9. Relocate indicated pallet racking from high bay storage rm. 102 warehouse in building O1 to warehouse 1 & 2 in building O2 as indicated in drawings
 10. Newly installed and relocated racks to be 20' high with 6' of storage space between levels and 8' between columns.
 11. Wire decks for pallet rack bays to be rated for at least 2000 lbs.
 12. All pallet racks to be securely anchored to the floor using anchor bolts and 5" x 8" base plate
 13. Contractor to provide data sheets, structural calculations prepared and stamped by a Structural Engineer licensed in the state of California and all specifications for proposed racking system including anchorage requirements.
 14. Contractor is to provide all parts needed for a complete installation
 15. Contractor to modify racks relocated to warehouse 2 of Building O2 in order to prevent obstruction of indicated doors and security cameras.
 16. Adjacent equipment and furnishings must be protected.



Project Title
O1, O2
Warehouse Pallet
Racking
Relocation and
Install

Revisions		
Number	Description	Date

Sheet Title

Title Page

Sheet Number
ASK - 001



FOR LAYOUT REFERENCE ONLY

(E) Pallet racks to be relocated to O2 warehouse, each approximately 72 ft long in 8 ft segments.

5 bays of racking to be relocated to O2 warehouse

Hatched N.I.C.



Project Title
O1, O2
Warehouse Pallet
Racking
Relocation and
Install

Revisions Number	Description	Date
---------------------	-------------	------

Sheet Title

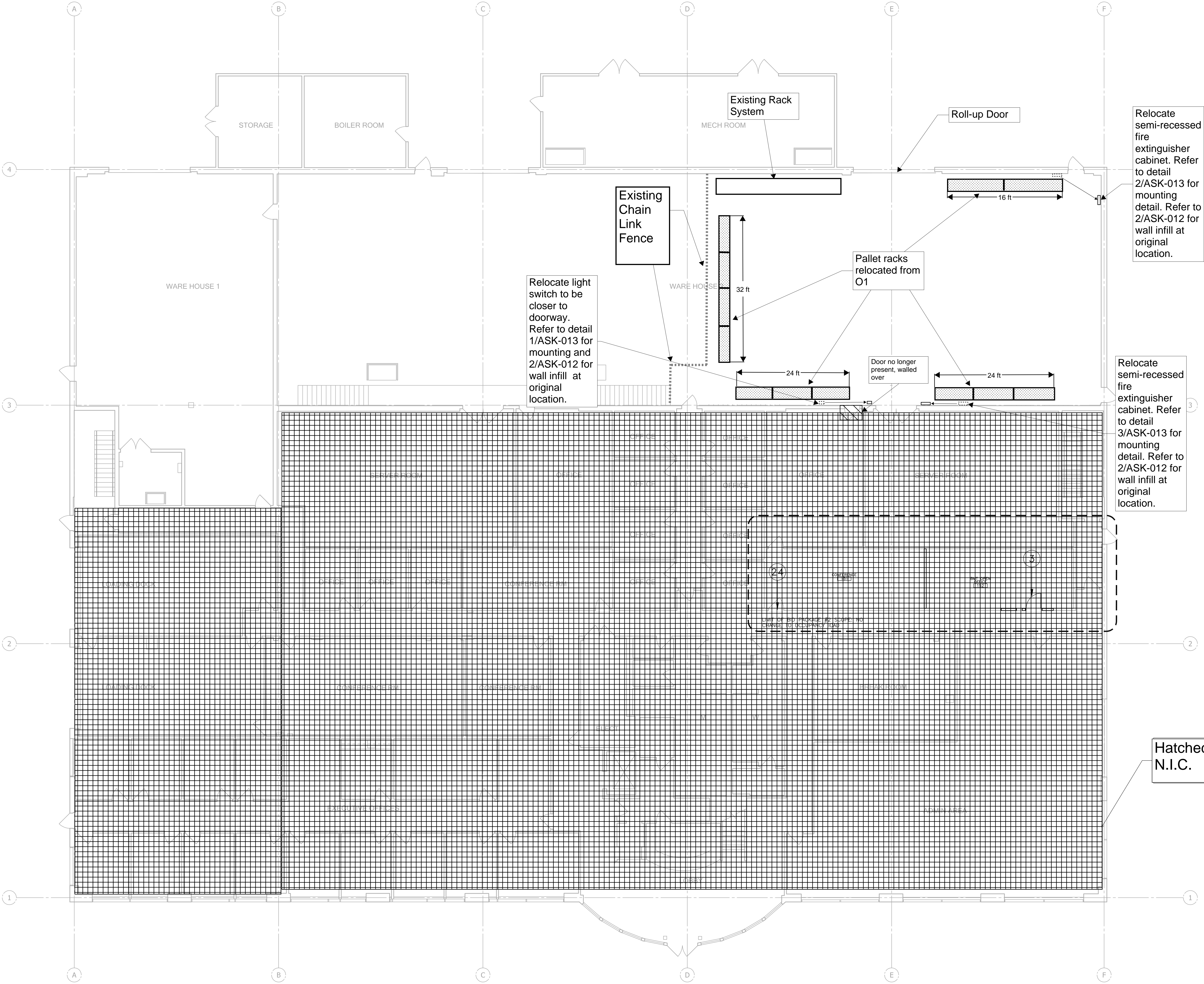
O1 Warehouse
Existing Rack
Layout

Sheet Number

ASK - 002



FOR LAYOUT REFERENCE ONLY



Project Title
O1, O2
Warehouse Pallet
Racking
Relocation and
Install

Revisions
Number Description Date

Sheet Title

O2
Warehouse 2
Rack Layout

Sheet Number

ASK - 003



NTS.
DIMENSIONS PROVIDED TO BE
CONFIRMED BY CONTRACTOR

FOR LAYOUT REFERENCE ONLY

Vent to be demoed. Refer to detail 1ASK-012 for wall infill detail

Roll-up Doors

32 ft of new pallet racks (4 bays) to be installed

Cut and Cap Duct at Connection Point

Vent to be demoed. Refer to detail 1/ASK-012 for wall infill detail

32 ft of relocated pallet racks (4 bays) to be installed

Pallet racks relocated from O1

Hatched area N.I.C.



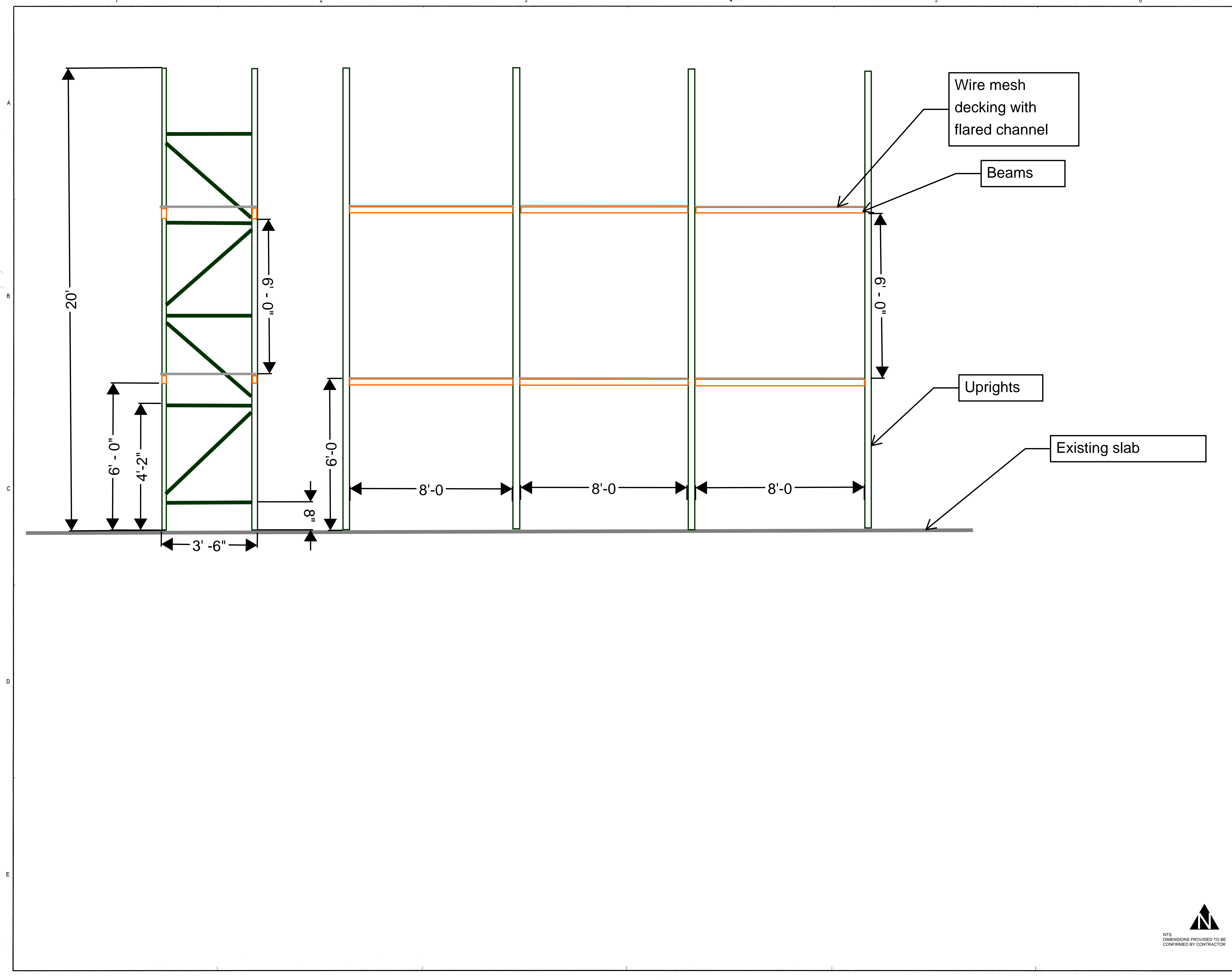
Project Title
O1, O2
Warehouse Pallet
Racking
Relocation and
Install

Revisions
Number Description Date

Sheet Title
O2
Warehouse 1
Rack Layout

Sheet Number
ASK 004







Project Title
O1, O2
Warehouse Pallet
Racking
Relocation and
Install

Revisions		
Number	Description	Date

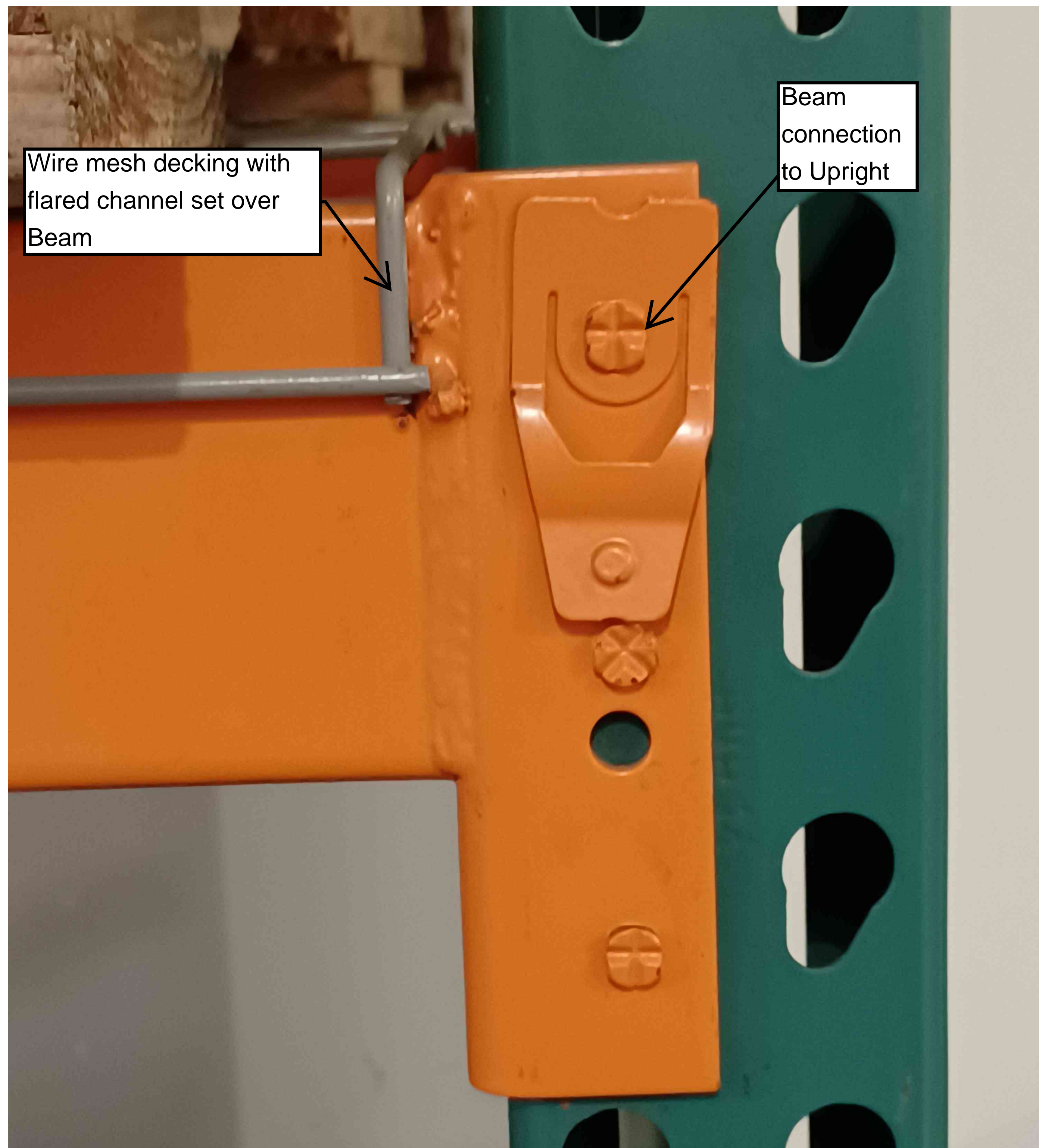
Sheet Title

Warehouse
Rack
Configuration

Sheet Number

ASK-005





1 Beam Connection to Upright



2 Interior view of beam connection to Upright



1 Upright bracing configuration



2 Bracing connection to uprights



1 Bracing welded connection to upright

2 Bracing sizing

A

B

C

D

E



Project Title
O1, O2
Warehouse Pallet
Racking
Relocation and
Install

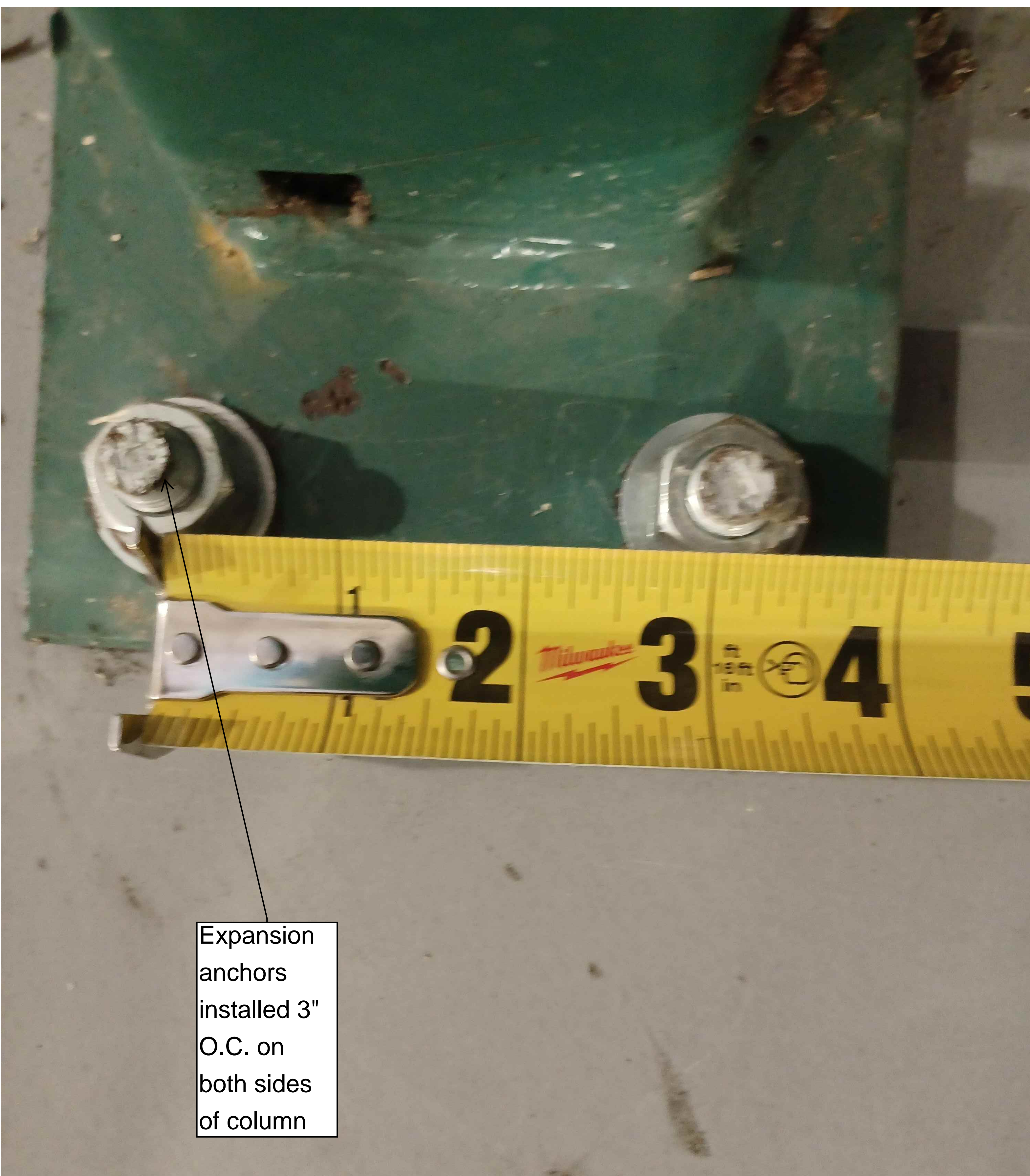
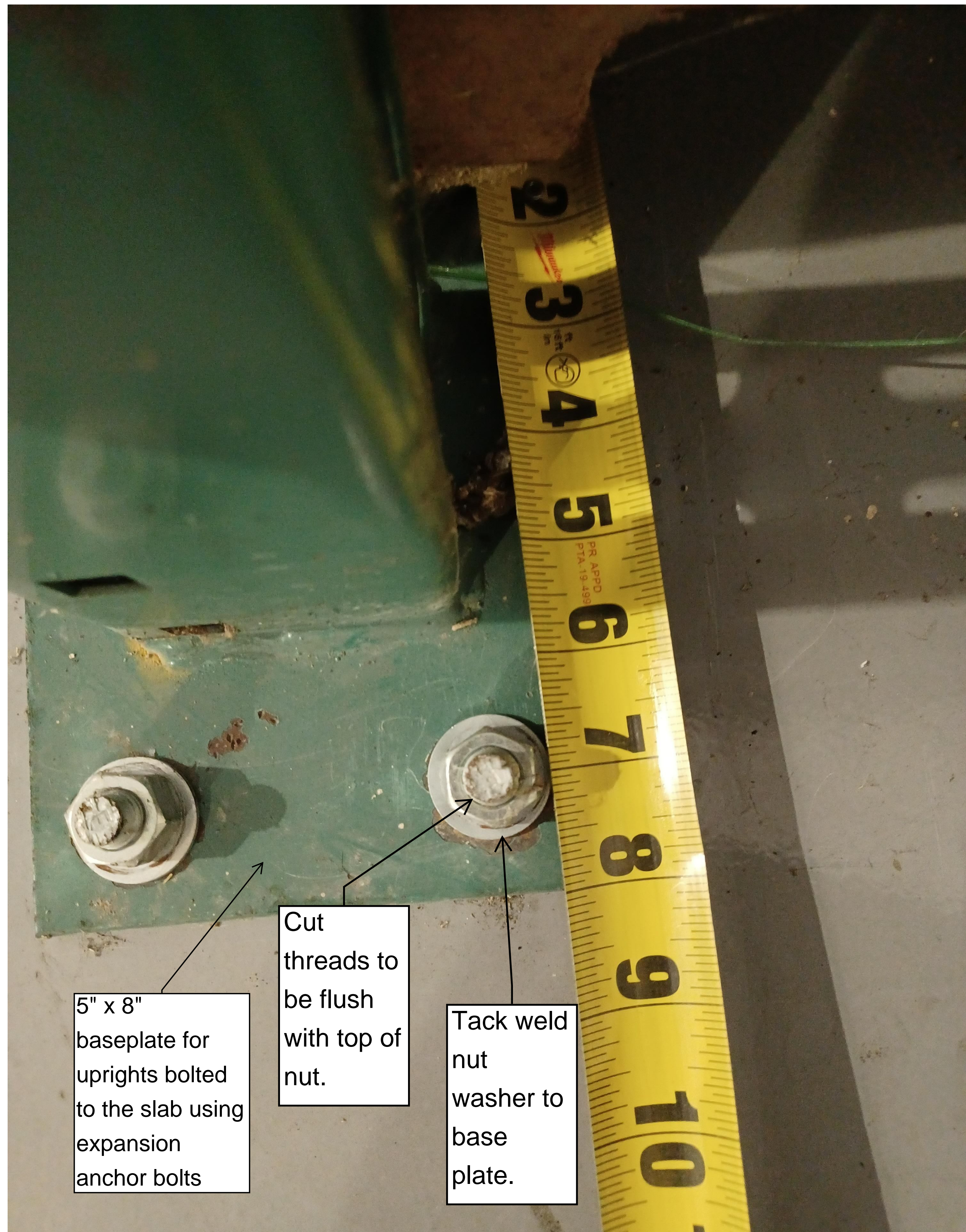
Revisions		
Number	Description	Date

Sheet Title

Uprights Details

Sheet Number

ASK-010



Project Title
 O1, O2
 Warehouse Pallet
 Racking
 Relocation and
 Install

Revisions		
Number	Description	Date

Sheet Title

Baseplate
 Details

Sheet Number

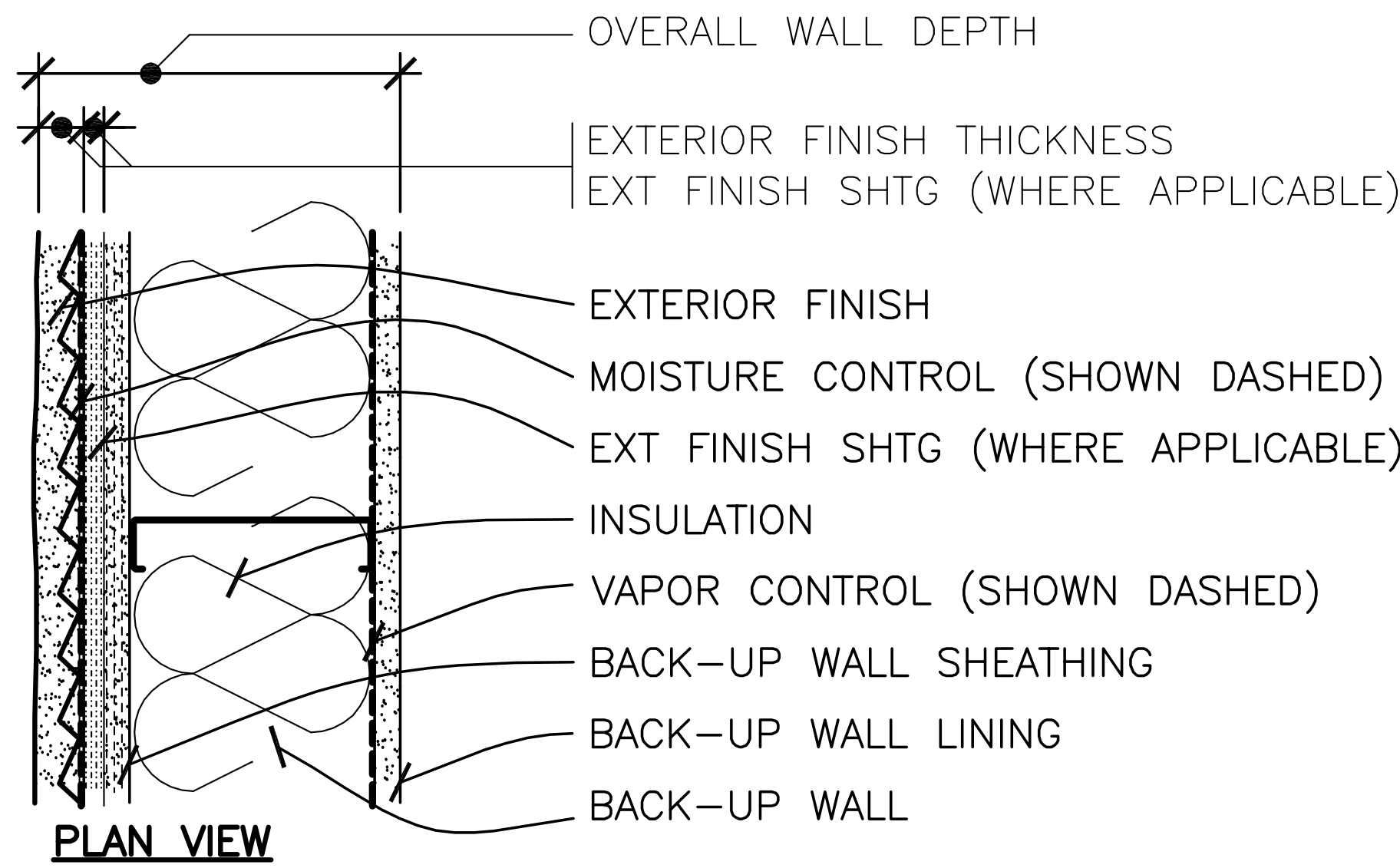
ASK-011





CEMENT PLASTER
(STUCCO) VENEER

STEEL STUD
BACK-UP WALL
(STUD INSUL)



WALL TYPE	EXTERIOR FINISH			MOIST CONTRL	EXT FIN SHTG	INSULATION		VAPOR CONTRL	BACK-UP WALL			WALL DEPTH	NOTES
	MATERIAL	THK	LATH			TYPE	THICKNESS		SHTG	STUDS	LINING		
UL1	PLAS-12	3/4"	METAL	BP-1	NONE	INSUL-21	6"	(SEE INSUL)	GYP SHTG-2	6" @ 16" OC	GYP BD-1	8"	1,2,4
UL2	PLAS-12	1"	METAL	AB-1	WD SHTG-2	INSUL-20	6"	VR-1	GYP SHTG-1	6" @ 16" OC	GYP BD-1	9"	1,3,5
UL3	PLAS-12	3/4"	METAL	BP-1	CEM SHTG-1	INSUL-24	6"	VR-2	GYP SHTG-1	6" @ 16" OC	GYP BD-1	8 1/2"	1,3,5
UL4													
UL9													

NOTE: WALL TYPES NOT REFERENCED ON DRAWINGS MAY NOT BE REQUIRED ON THIS PROJECT

NOTES: 1. SEE ROOM FINISH SCHEDULE & DWGS FOR INTERIOR WALL LINING VARIATIONS, WHERE APPLICABLE.
2. ATTACH LATH TO STL FURG FASTENED OVER MOISTURE CONTROL TO STUDS BEHIND.
3. ATTACH LATH OVER MOISTURE CONTROL THROUGH SHEATHING TO STUDS BEHIND.
4. STUD SIZE & SPACING SHOWN IS MIN REQUIRED & MUST BE VERIFIED BY DESIGN OF SUPPLIER.

1

Exterior Wall Infill

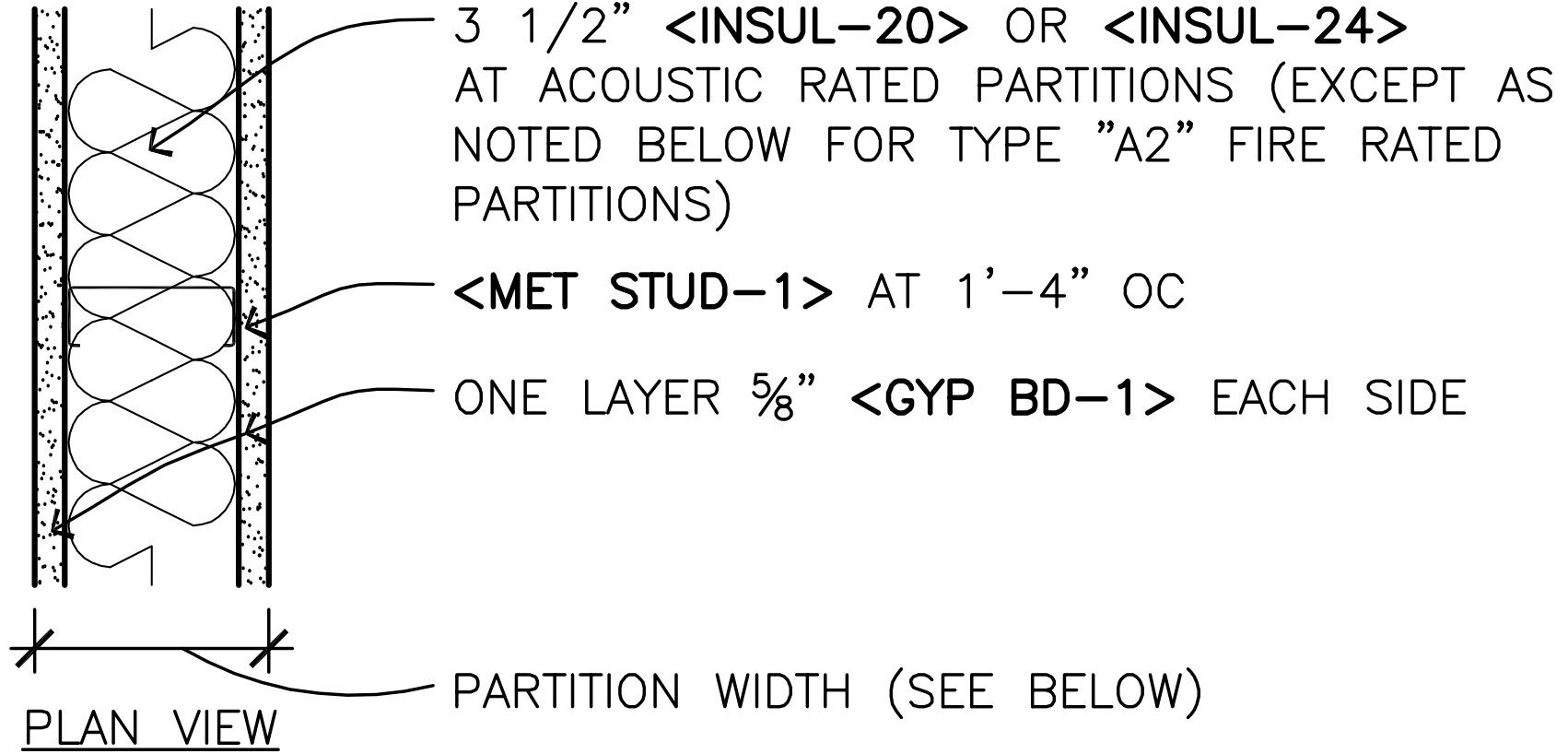
Note

1. INTERIOR WALL STUD SHALL BE MIN 6" x 1 1/4" FLANGE, 18 GA.
2. EXTERIOR WALL STUDS SHALL BE MIN. 16GA
3. CONTRACTORS OPTION: THICKER STUD GAUGE AND/OR LARGER FANGE THAN SPECIFIED IS STRUCTURALLY ACCEPTED



NON COMBUSTIBLE

AVAILABLE FIRE
RESISTANCE: 1 HOUR



PARTITION TYPE	STUD WIDTH	PARTITION WIDTH	1 HOUR RATING REFERENCE	STC		NOTES	AS DRAWN DIMENSION
				W/O INSUL	W/ INSUL		
A2	2 1/2"	3 3/4"	UL DES NO U425	40-44	47 EST	1 HR REQD. 2 1/2" MIN OF <INSUL-20>	3 3/4"
A3	3 5/8"	5"	UL DES NO U465	40-44	45-49	1 HR REQD. 2 1/2" MIN OF <INSUL-20>	5"
A6	6"	7 1/4"	UL DES NO U465	40-44	45-49		7 1/4"
A8	8"	9 1/4"	UL DES NO U465	40-44	45-49		9 1/4"

NOTES: UL# U465 (NOTES APPLICABLE AT FIRE RATED PARTITIONS):

- CHANNEL SHAPED RUNNER, MATCH STUD WIDTH, 1 1/4" LEGS FORMED FROM MIN. NO. 22 MSG GALV STEEL, ATTACHED TO FLOOR AND CEILING WITH FASTENERS SPACED 24" OC MAX.
- STUDS, CHANNEL SHAPED, WIDTH AS INDICATED, 1 1/4" LEGS, 3/8" FOLDED BACK RETURNS, FORMED FROM MIN NO. 22 MSG GALV STEEL, SPACED @ 16" OC.
- GYP SUM BOARD, 5/8" THICK, 4 FOOT WIDE, ATTACHED TO STEEL STUDS AND FLOOR AND CEILING TRACK WITH 1" LONG, TYPE "S" STEEL SCREWS. SPACE 8" OC ALONG EDGES OF BOARD AND 12" OC IN THE FIELD OF THE BOARD. JOINT ORIENTED VERTICALLY AND STAGGERED ON OPPOSITE SIDES OF THE ASSEMBLY.
- VINYL, DRY OR PREMIXED JOINT COMPOUND, APPLIED IN TWO COATS TO JOINTS AND SCREW HEADS; PAPER TAPE, 2" WIDE, EMBEDDED IN FIRST LAYER OF COMPOUND OVER ALL JOINTS.

2

Interior Wall Infill Detail



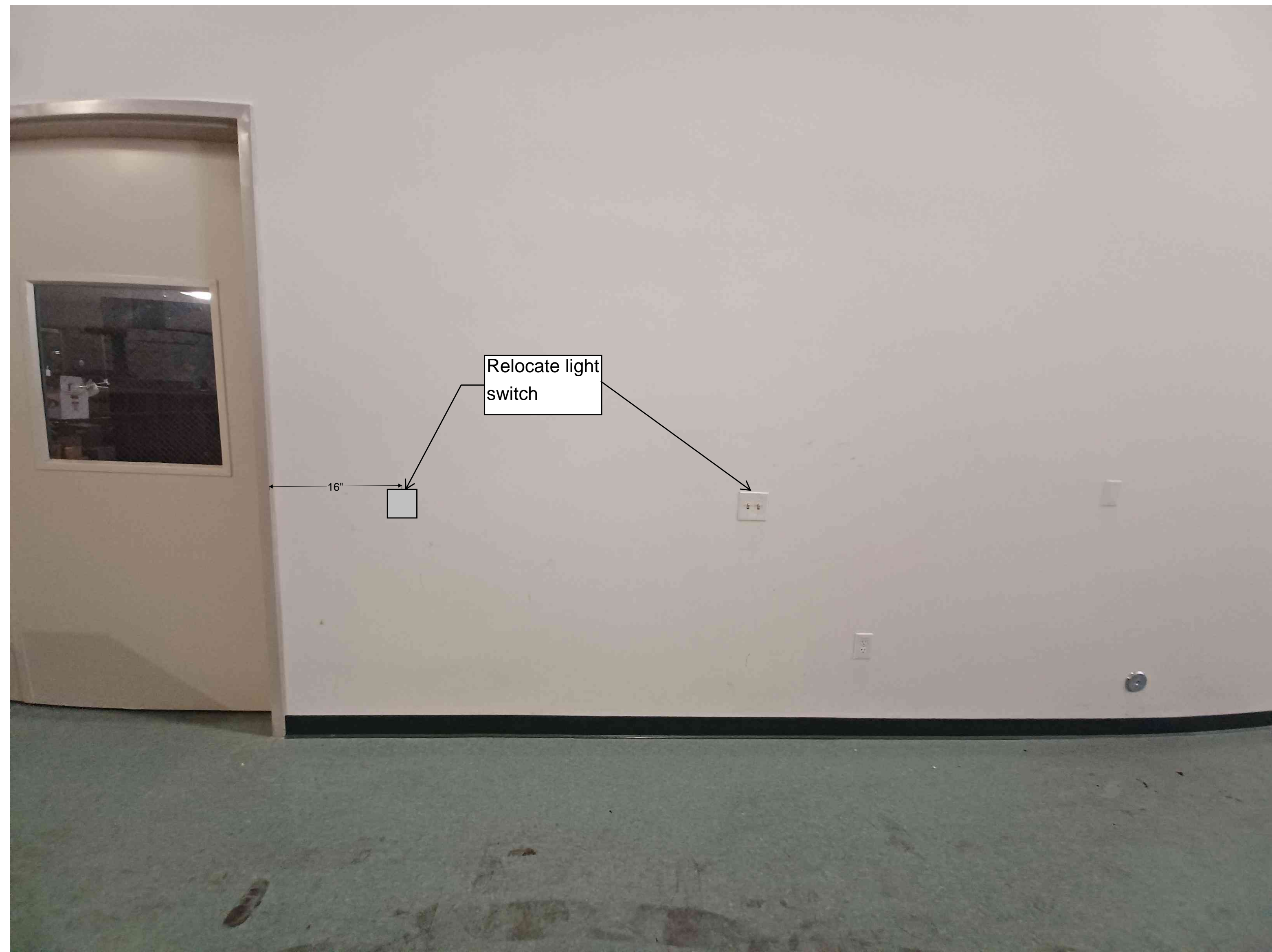
Project Title
O1, O2
Warehouse Pallet
Racking
Relocation and
Install

Revisions		
Number	Description	Date

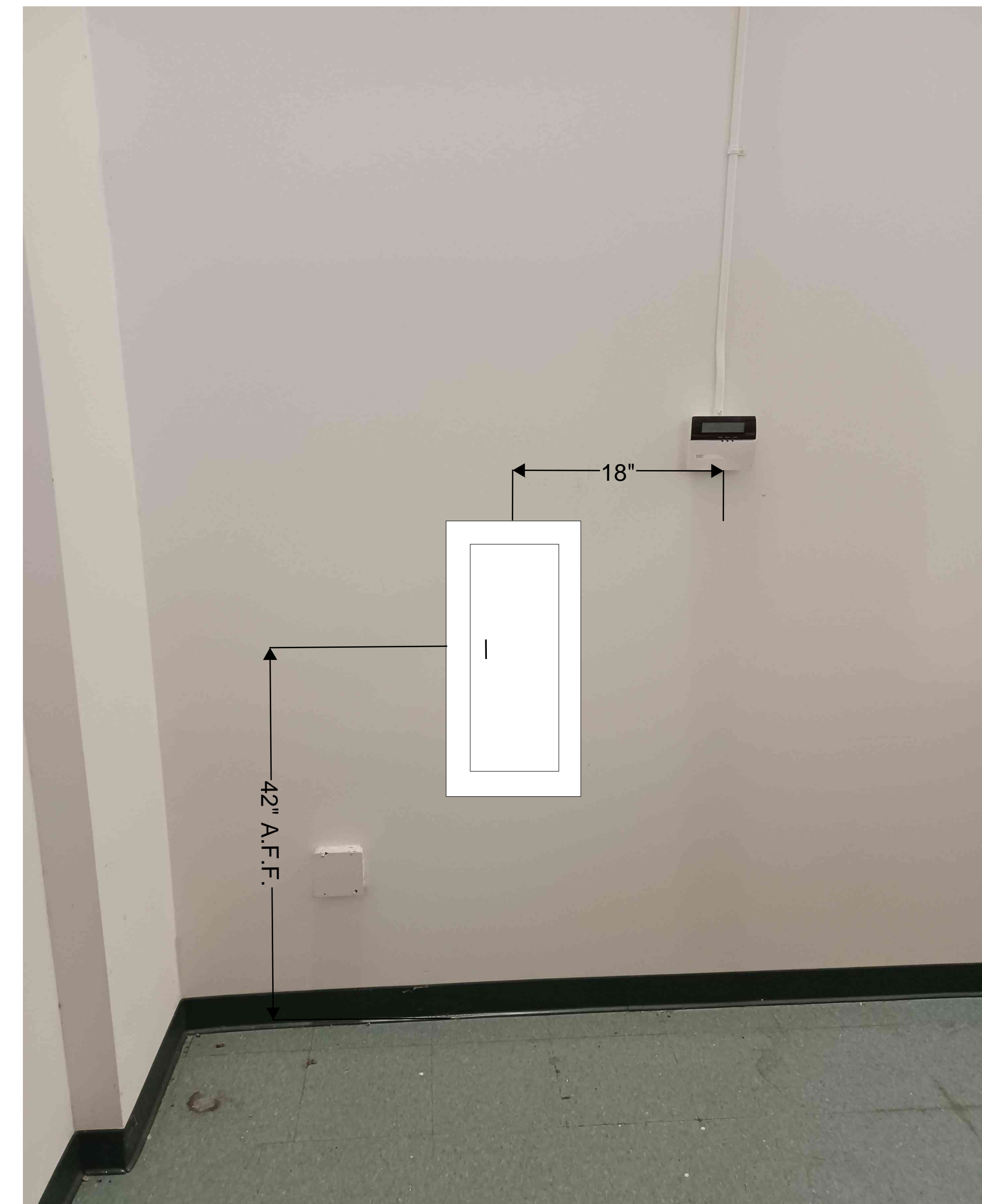
Sheet Title
Wall Infill
Details

Sheet Number
ASK-012

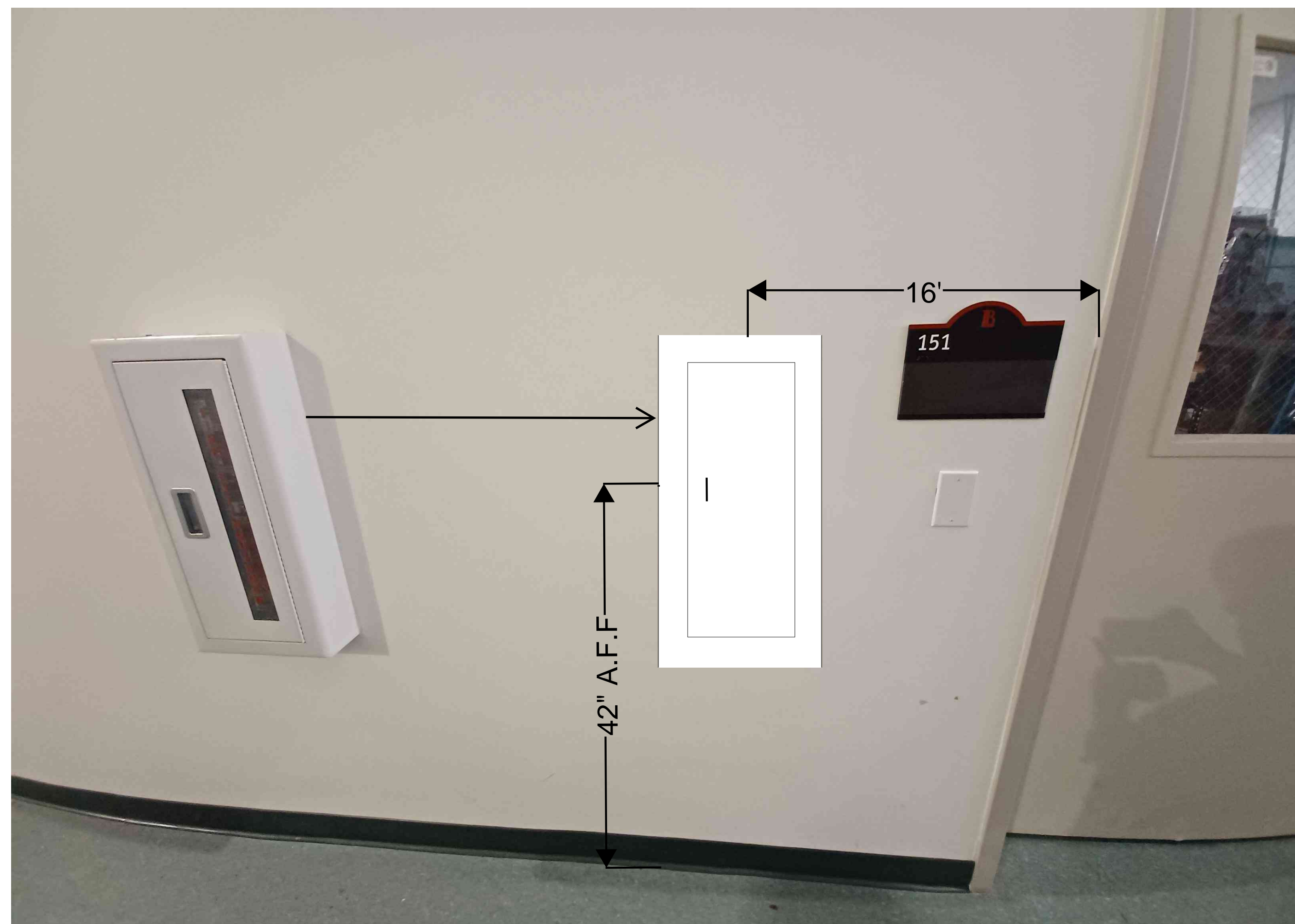




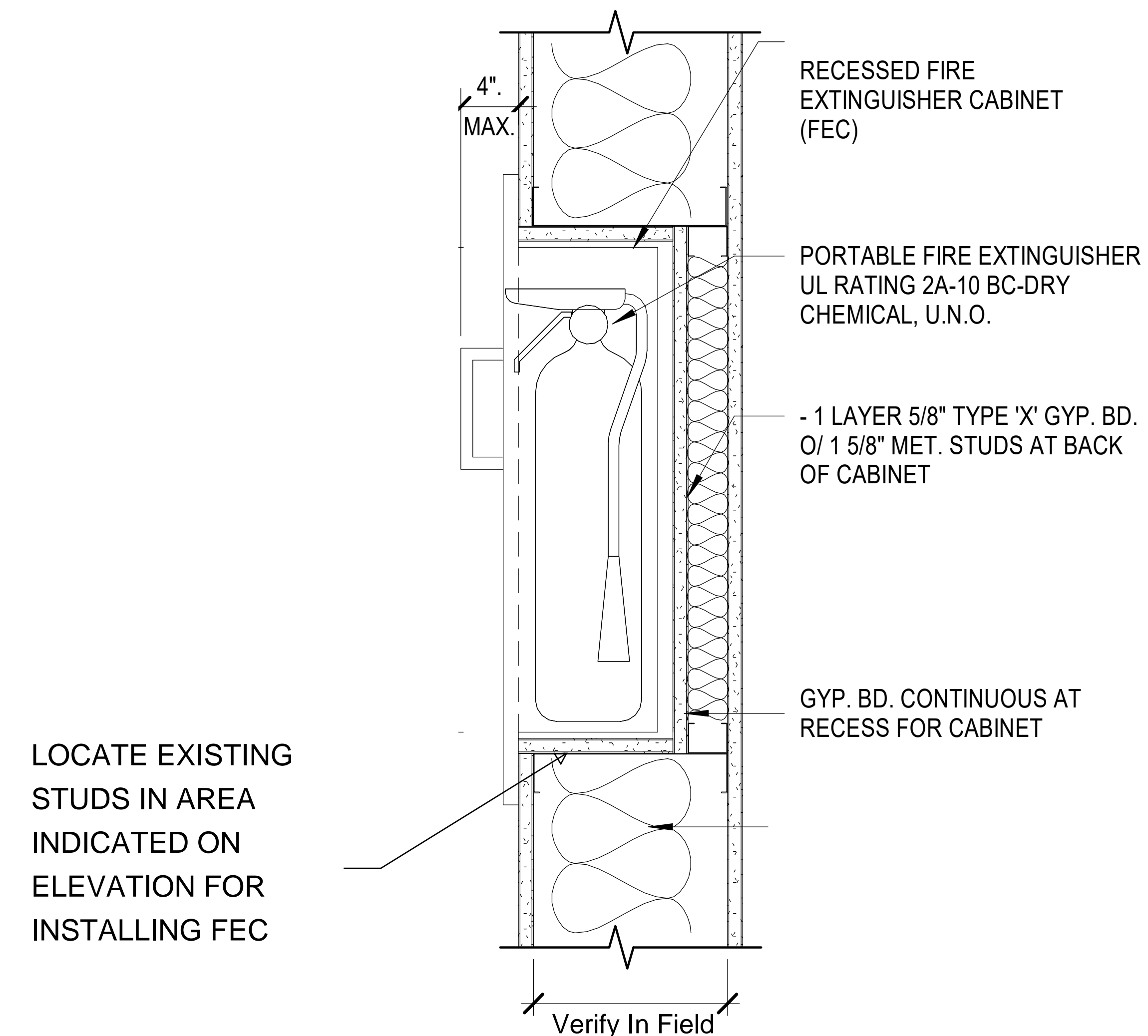
1 Light Switch Relocation



2 Fire Extinguisher Cabinet 1 Elevation



3 Fire Extinguisher Cabinet 2 Elevation



4 Fire Extinguisher Cabinet Mounting Detail

NTS.
DIMENSIONS PROVIDED TO BE
CONFIRMED BY CONTRACTOR



Project Title
O1, O2
Warehouse Pallet
Racking
Relocation and
Install

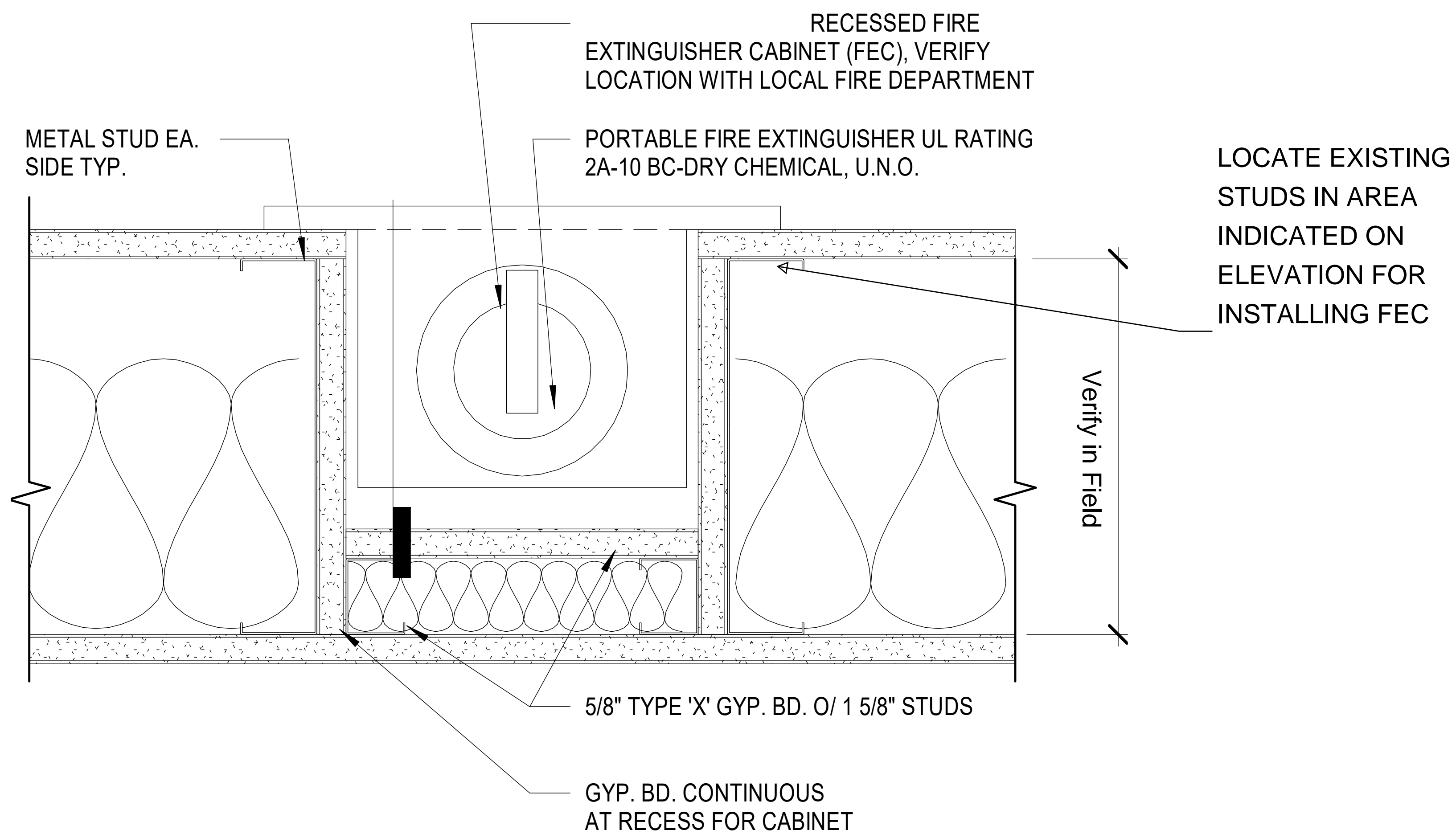
Revisions Number	Description	Date

Sheet Title

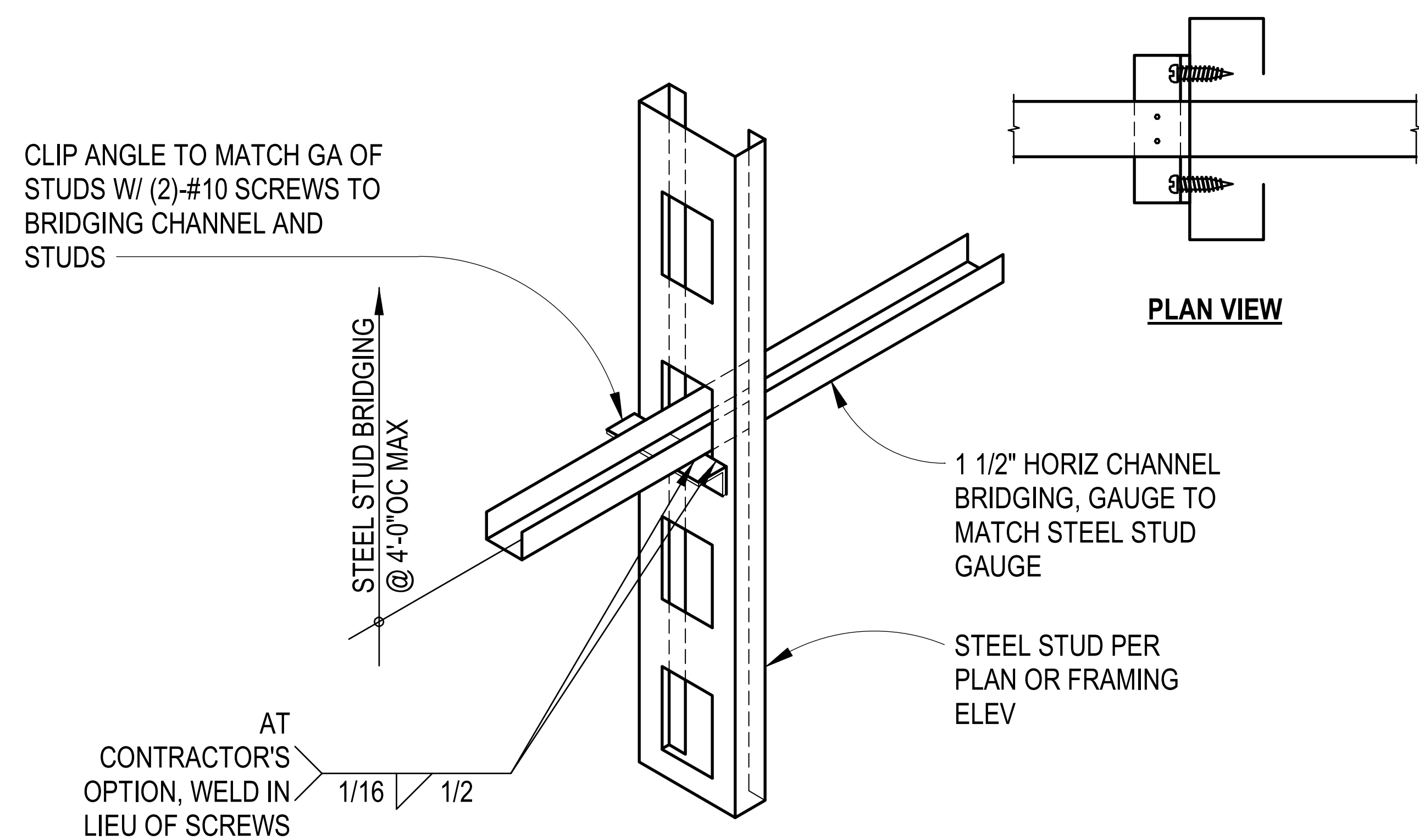
Mounting
Details

Sheet Number

ASK-013

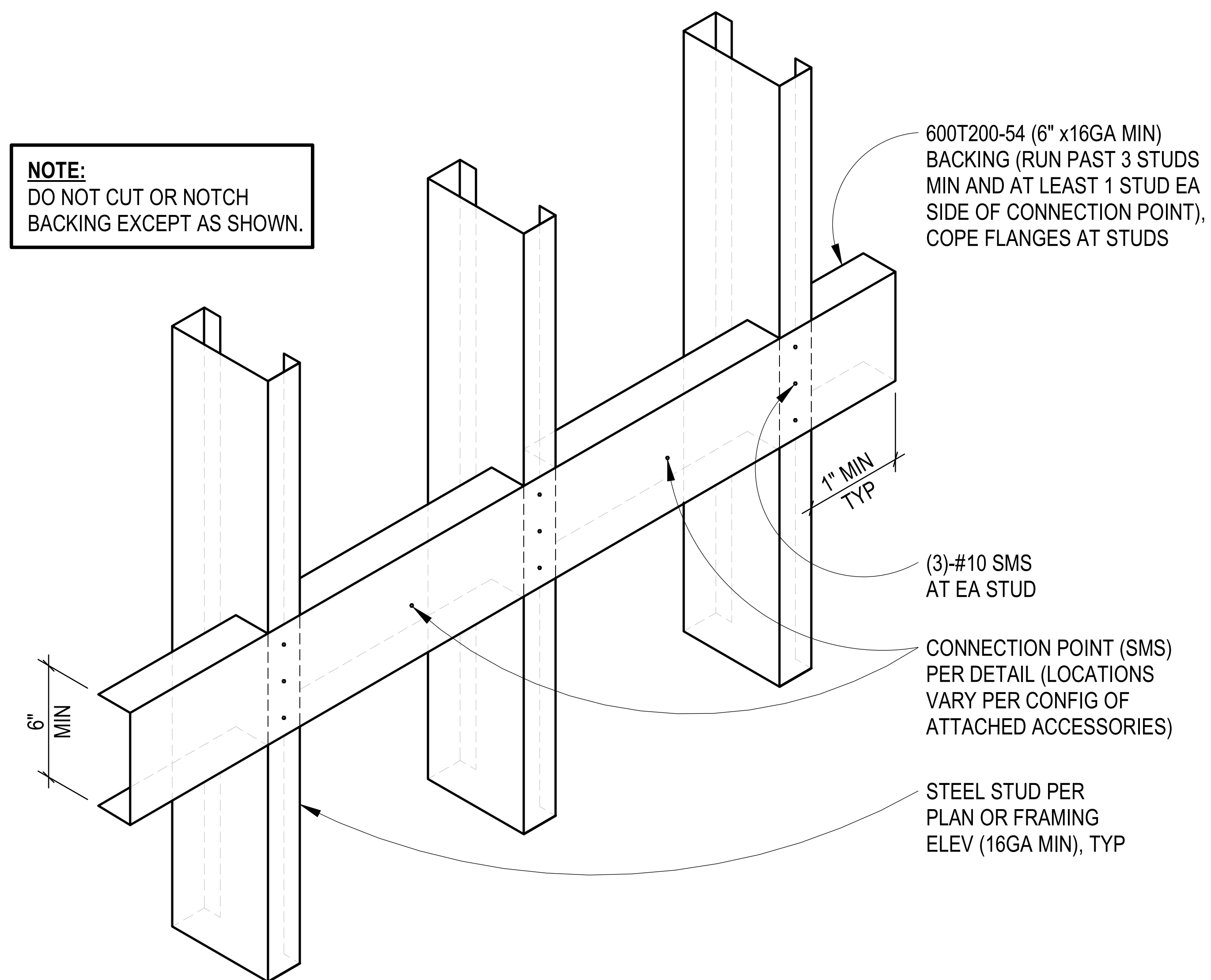


1 Fire Extinguisher Framing Detail



NOTE:
UNLESS NOTED OTHERWISE ON PLAN, STEEL STUD BRIDGING SHALL BE INSTALLED WHERE SHEATHING DOES NOT OCCUR ON BOTH SIDES OF THE WALL FOR FULL HEIGHT OF STUD. WHERE SHEATHING OR FINISH IS DISCONTINUED, BRIDGING IS REQUIRED.

3 Wall Framing Bridging Detail



2 Interior Wall Backing Detail



Project Title
O1, O2
Warehouse Pallet
Racking
Relocation and
Install

Revisions Number	Description	Date

Sheet Title
Wall Framing
Details

Sheet Number
ASK-014