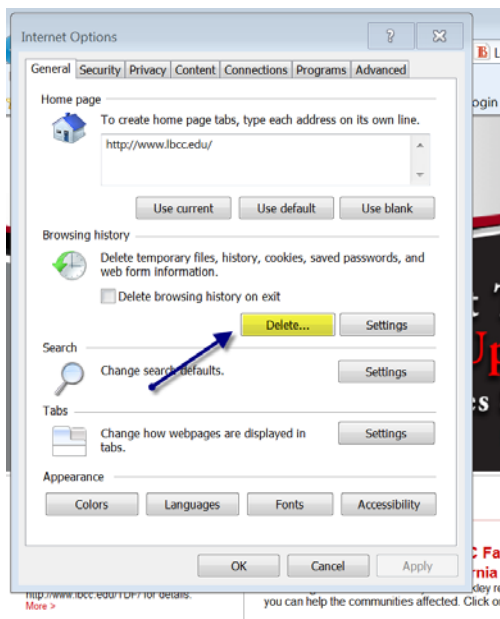
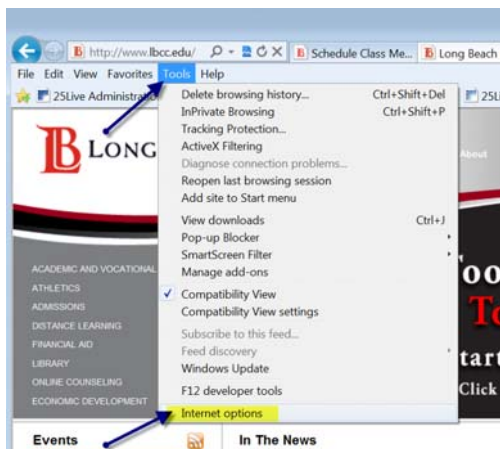


Can't Log on to the SCF System?

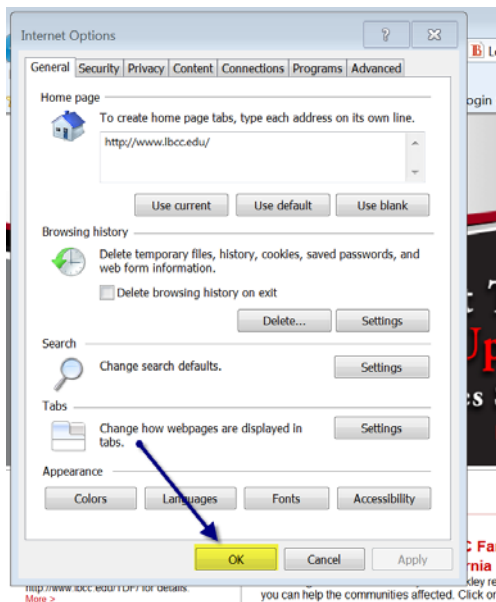
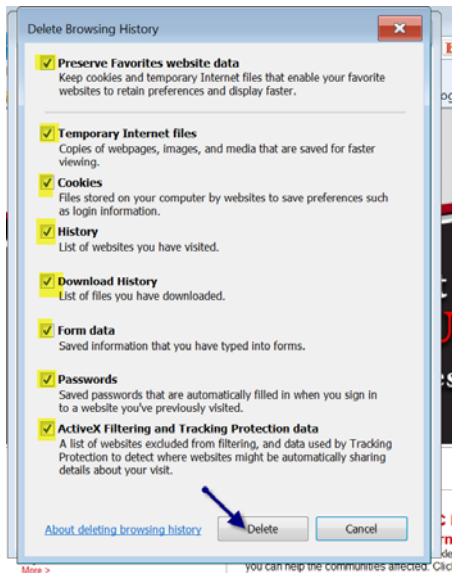


Since we're all on the same log-in, it's probably not the SCF system.

First thing to do is clear your cache.... Follow these steps:



Can't Log on to the SCF System?



Close the browser.

Now try to log in again.

If that doesn't work, try a different browser, and try again.

If that doesn't work, log off and log back in again, and try again.

If that doesn't work, shut down, log in, and try again.

If that doesn't work, call the HELP Line.