

Citrix Workspace App

INSTALLING AND ACCESSING | MAC VERSION

FOR LONG BEACH CITY COLLEGE **STUDENTS**

Overview

In this tutorial, you will learn how to:

- Install the Citrix Workspace App on a Mac.
- Sign in and access your available desktops.

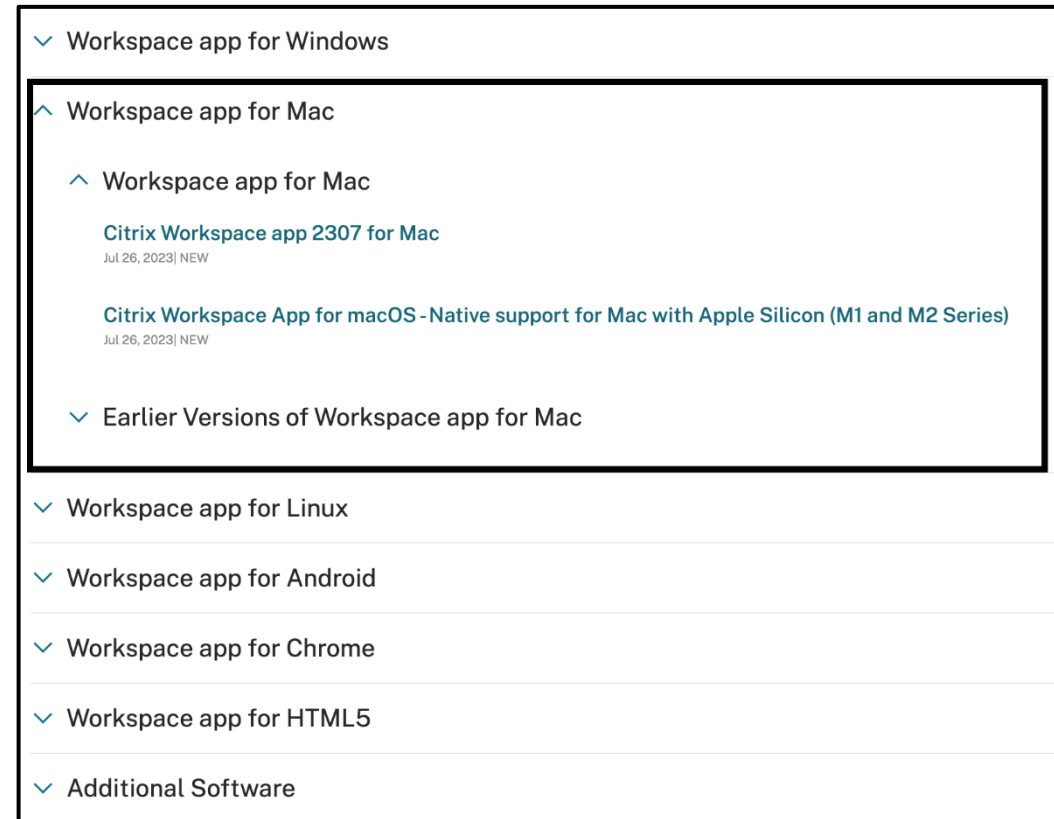
Important

This guide is specific to Apple laptops/desktops. Please refer to our other guides if you are on a Windows device or Chromebook.

Step 1: Select Your Version of Citrix.

You will need to select the version of the Workspace App that is compatible with your Mac. [Click here to access the download link.](#)

Note: The image on this slide shows the most current versions for Mac. The names of these versions are subject to change as they are updated.



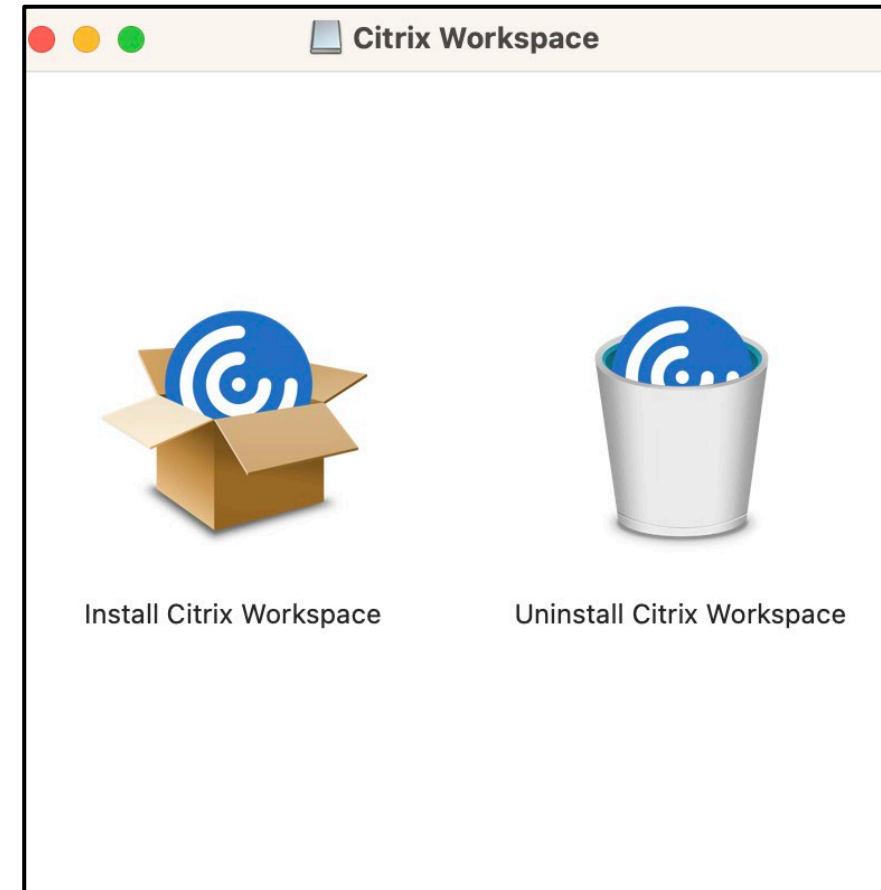
Step 2: Download the File

Once you have found the correct version for your device, click **Download file**. Click on the download file to open it.

The screenshot shows the Citrix website interface for downloading the Citrix Workspace app 2307 for Mac. The page features a purple navigation bar with links for Solutions, Products, Resources, Customers, and Company. Below the navigation bar, there is a breadcrumb trail: / Downloads / Citrix Workspace App / Workspace app for Mac / Citrix Workspace app 2307 for Mac. The main content area is titled 'Citrix Workspace app 2307 for Mac' and includes a 'Find Downloads' section with a dropdown menu set to 'Citrix Workspace App' and a search bar. To the right, the release date is listed as 'Jul 26, 2023', and the compatible operating systems are listed as 'macOS 11 Big Sur', 'macOS 12 Monterey', and 'macOS 13 Ventura (13.5)'. A 'Download File' button is prominently displayed next to the file size '431.7 MB -(.dmg)'. Below this, the version '23.07.0.64 (2307)' and a list of checksums are provided. At the bottom of the page, a file named 'CitrixWorkspac....dmg' is shown in a download bar, circled in red with an arrow pointing to it.

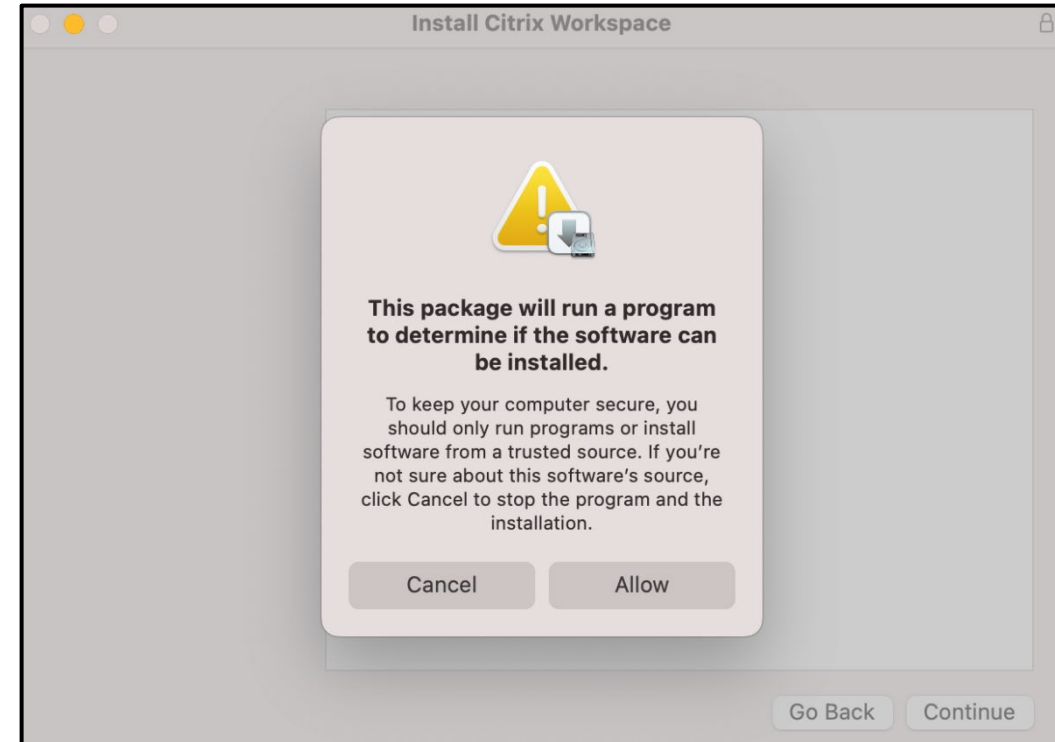
Step 3: Install the Application

After opening the download file, the following option to install the Workspace App will appear. Double-click on **Install Citrix Workspace**.



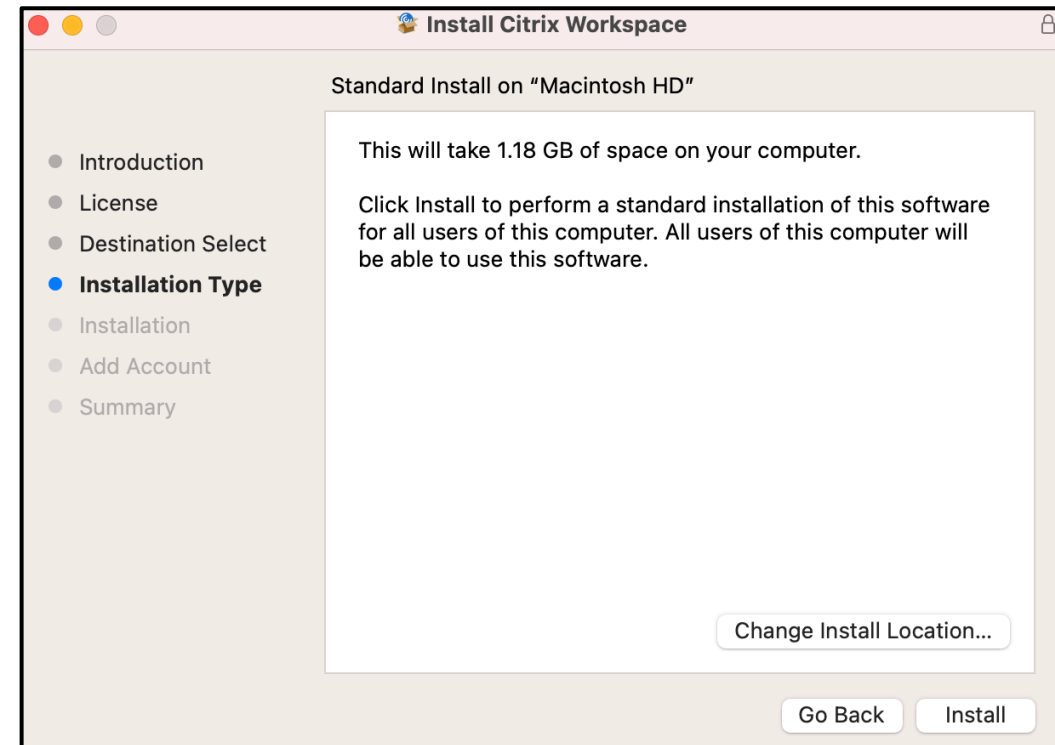
Step 4: Security Check

Your device will run an extra security check before installing the Workspace App, click **Allow** to move onto the next step.



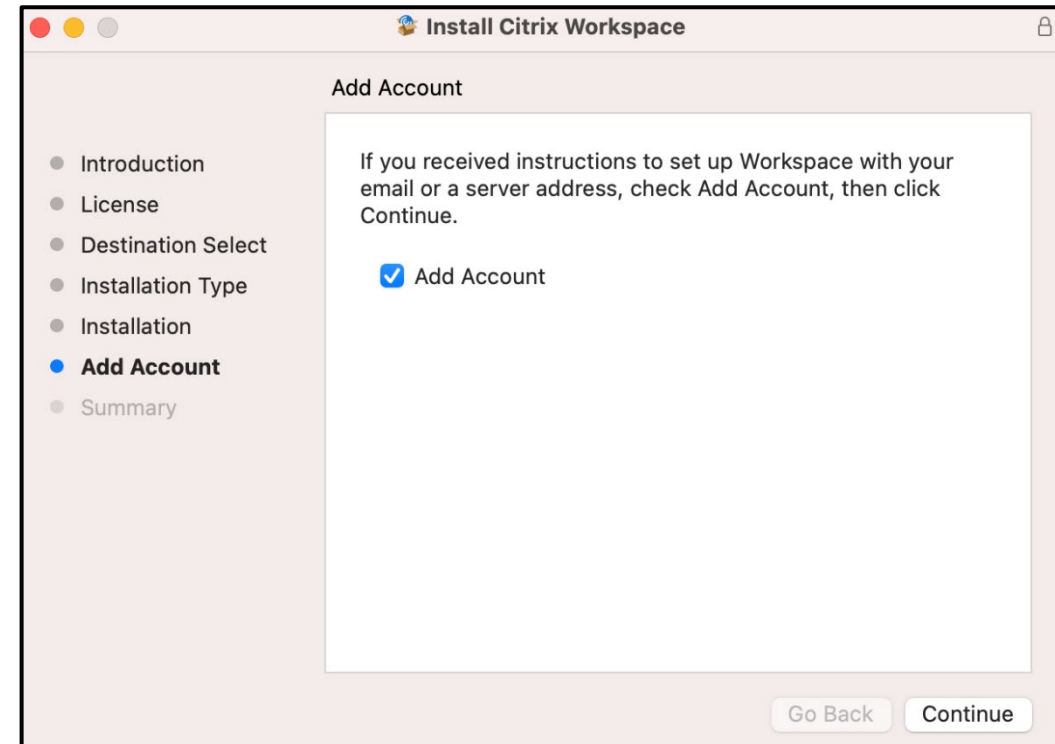
Step 5: Accept the Terms of Use and Install

You will be asked agree to the terms of use. Once you have clicked **Agree** and **Continue** on each of the prompts, click Install. You may need to enter your device's password and username to authorize this action.



Step 6: Add Your LBCC Account

You will be asked whether you want to add an account. Check the box labeled **Add Account** and click **Continue**.

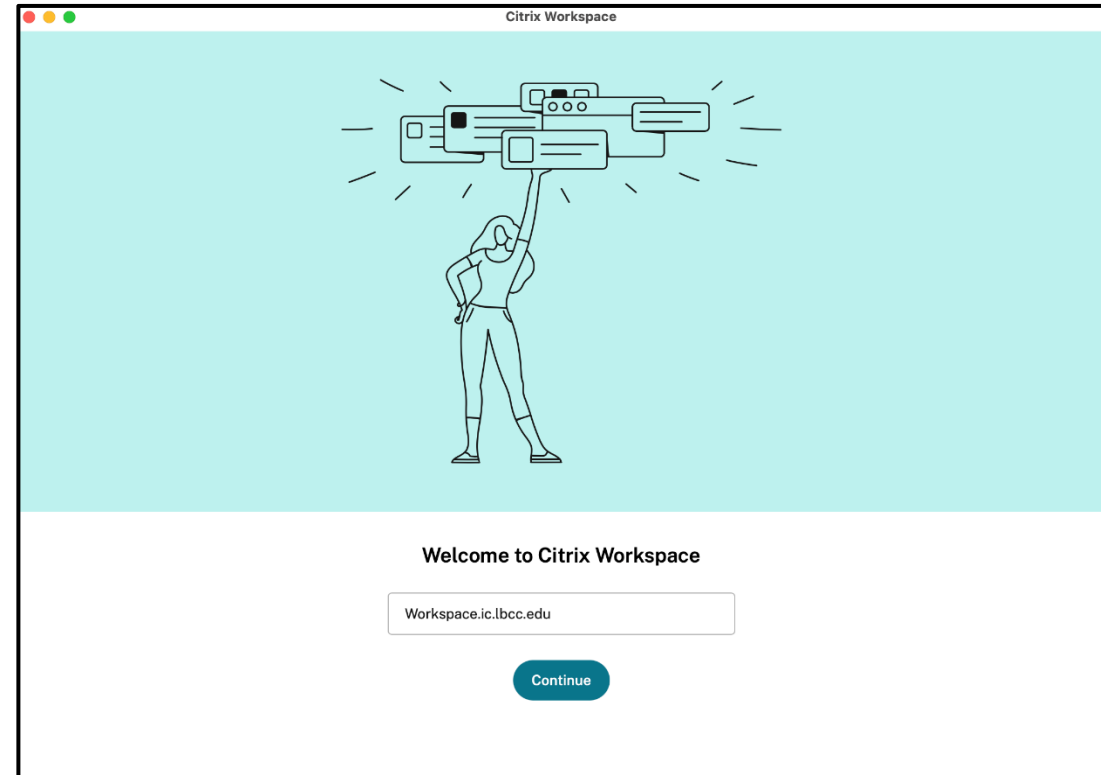


Step 7: Enter the Web Address

You will be asked to add an account. Type the following in the box provided:

Workspace.ic.lbcc.edu

Click **Continue**.



Step 8: Enter Your Login Credentials

Next, you'll be asked for a username and password. The **username** is your Student ID Number. The **password** is your Viking Portal password.

Note: If you receive an “incorrect username or password” error despite entering the correct information, you will need to reset your Viking Portal password.

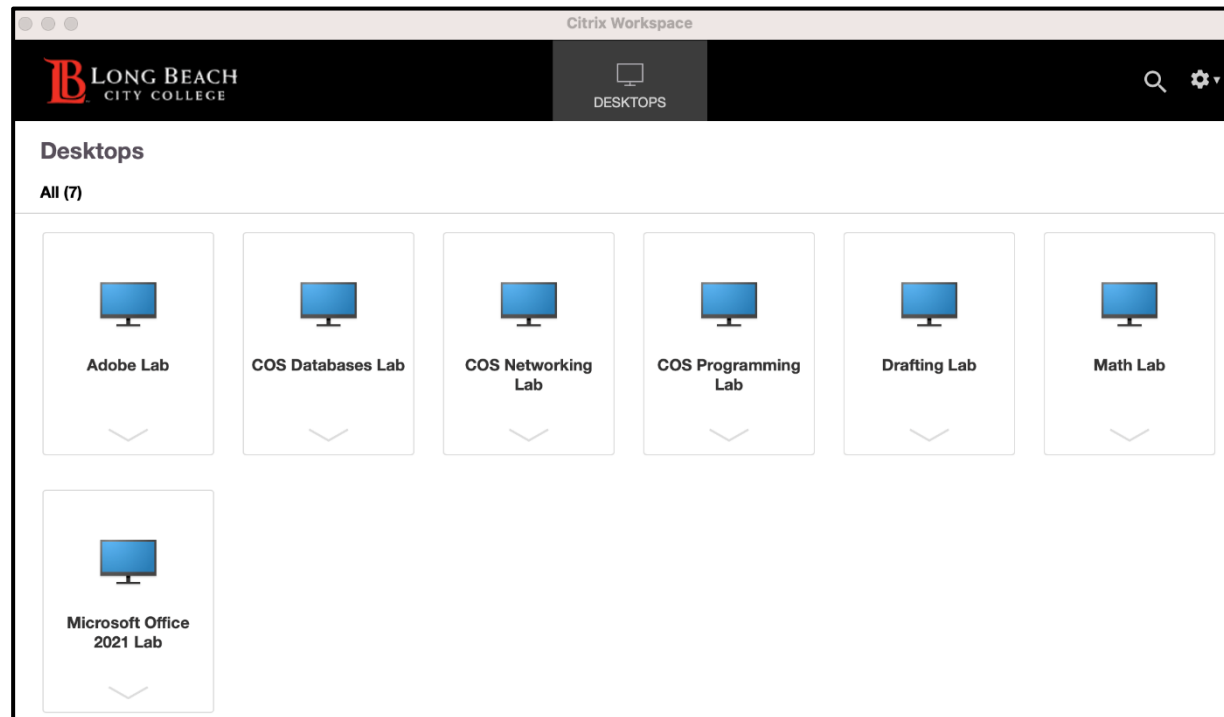
The screenshot shows a standard macOS-style dialog box titled "Citrix Workspace". It features a light gray background and a title bar with three window control buttons (red, yellow, gray). The main content area is white and contains the following elements:

- A label "User name:" followed by a white text input field with a blue border and a vertical cursor.
- A label "Password:" followed by a white password input field with a gray border.
- Two buttons at the bottom right: a white "Cancel" button and a blue "Sign In" button.
- A lock icon and the text "Secure connection" at the bottom left.

Congratulations!

The Workspace App may take a few moments to load, however when it does you will be able to choose between the desktops made available to you. Click on the one you want to open it.

You will only have the desktops that are required for your course.



Questions?

If you run into any issues, or have further questions, please feel free to reach out to us!

- Website: www.lbcc.edu/sthd
- Phone: (562) 938 - 4250
- Email: sthd@lbcc.edu