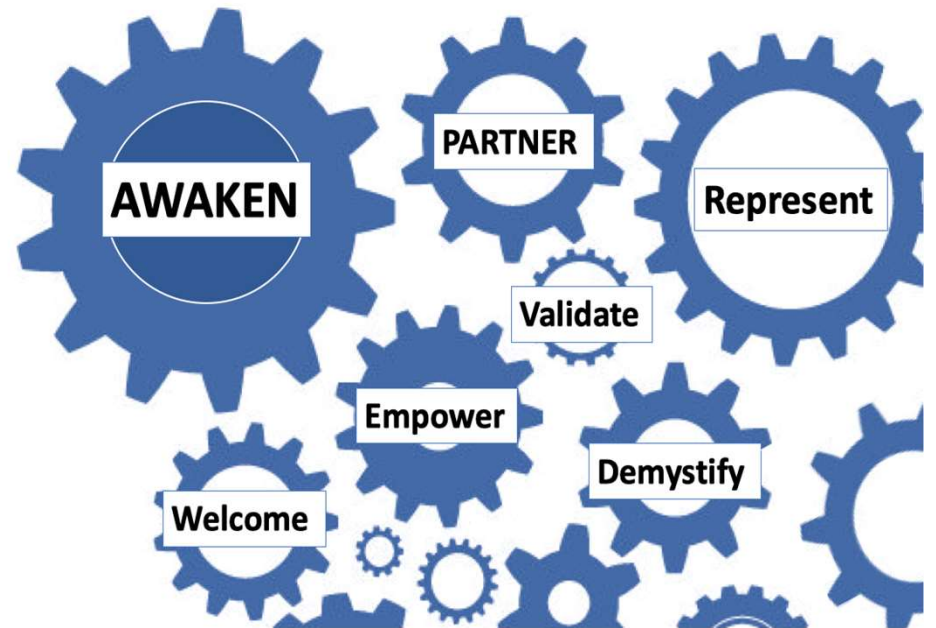


# INFUSING THE SEVEN EQUITY PRECEPTS INTO YOUR CLASSROOM

Matt Lawrence, Ph.D.  
Student Equity Coordinator  
Professor of Philosophy



**College was originally created *for* a particular sort of student and has been replicated over and over again, largely *by* that same type of student. College professors are typically students that the system served well.**



**The needs of our students are different...**



# Break the Cycle



Let's design our  
courses to help  
**OUR** students  
succeed.



**AWAKEN WELCOME PARTNER REPRESENT**  
**EMPOWER VALIDATE DEMYSTIFY**



1

# **AWAKEN**

- **Take responsibility for the equitable success of your students.**
- **Realize that every attitude, norm, and policy embodied in your syllabus and teaching can impact student success.**
- **Look for disproportionate impact in your policies, grading structures, course content and assignments.**



# WELCOME

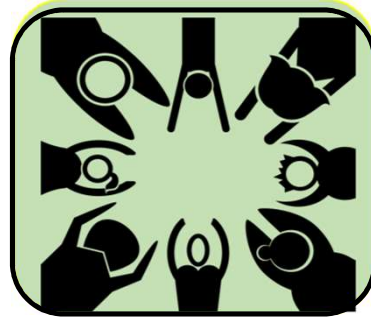
- **Examine the language and tone used throughout your syllabus. Ensure that it is positive and encouraging.**
- **Be mindful of student insecurities and fear.**
- **Create a supportive and inclusive classroom discussion environment.**





## **PARTNER**

- **Let students know that you are there for them, and clarify how they can seek your help.**
- **Examine norms and attitudes around late work, second drafts, etc.**
- **Discover student's educational goals and find ways to support them beyond the classroom.**



## REPRESENT

- Look for ways to make your course content better represent the diversity of our student body.
- Use more representative and inclusive images and examples throughout your syllabus and your teaching.
- Show that you value the diverse perspectives of your students.





# EMPOWER

- **Examine your curriculum and assignments to maximize engagement and empowerment of your students.**
- **Use students' culture and life experiences as assets.**
- **Create a classroom discussion environment in which everyone feels empowered to participate.**
- **Look for ways to involve your students in campus and community events.**



# **VALIDATE**

- **Ensure that your syllabus conveys your belief that every student can be successful in your class.**
- **Maintain a growth-mindset about your students, and teach them about the importance of developing a growth mindset.**
- **Avoid punitive language that suggests a lack of trust and low expectations of your students.**



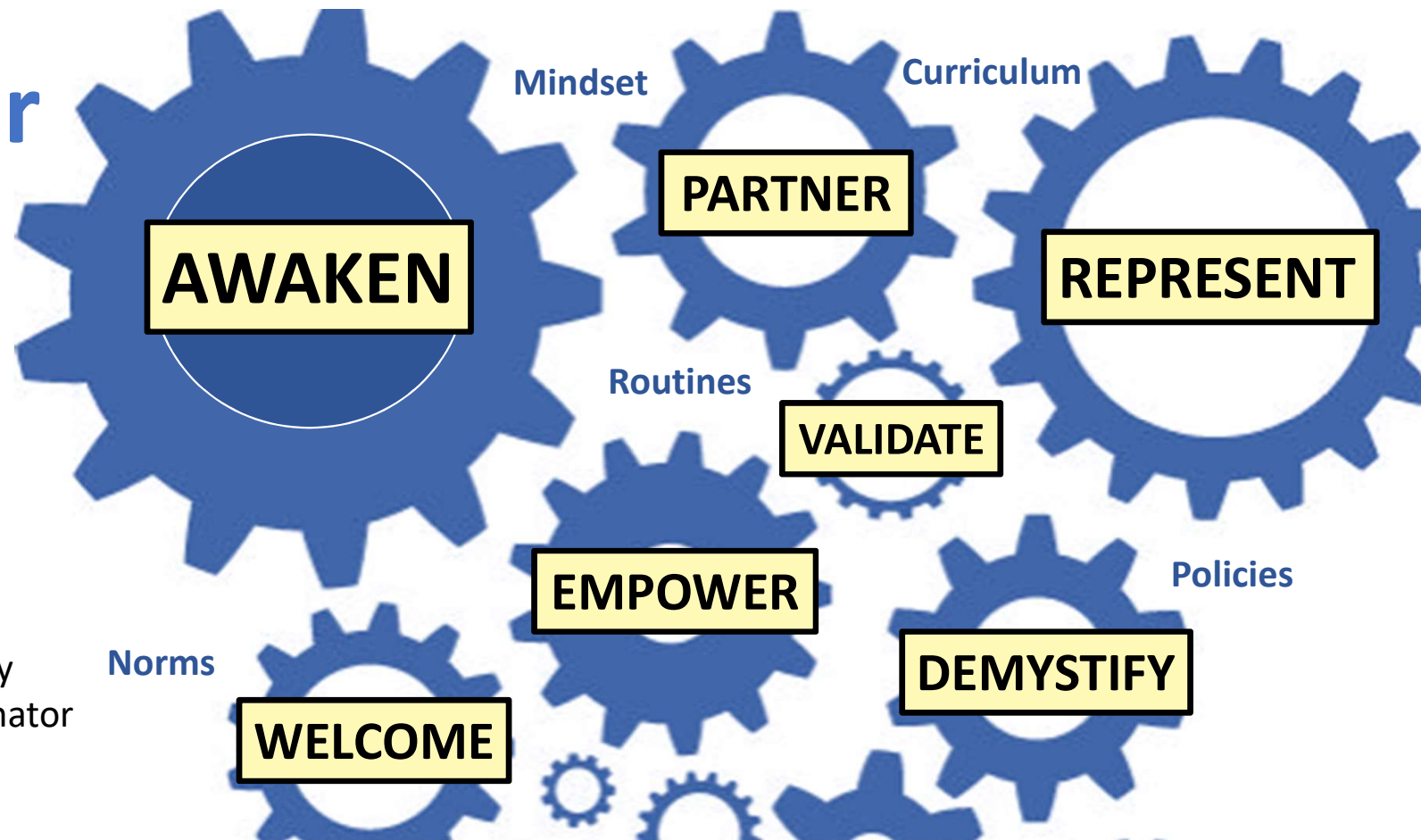
7

# DEMYSTIFY

- **Demystify classroom expectations, and assignment expectations.**
- **Light the way to success by modeling and scaffolding your assignments.**
- **Inform your students about campus resources such as tutoring centers, computer labs, disabled students services, psychological counseling, etc.**
- **Use a clear and straightforward grading scheme and post your grades on Canvas.**

Have a  
great year  
at LBCC!

# The Seven Equity Precepts



Matt Lawrence, Ph.D.  
Professor of Philosophy  
Student Equity Coordinator  
[mlawrence@lbcc.edu](mailto:mlawrence@lbcc.edu)