

CAREER OPPORTUNITIES

Students who complete the LBCC Geography program and go on to earn a 4-year degree can work in a wide range of interesting and socially relevant careers. They can help improve the environment, promote livable communities, increase economic and human development, support local and national security, and much more. Career opportunities include:

- CLIMATOLOGIST
- COMMUNITY ORGANIZER
- EMERGENCY MANAGEMENT OFFICER
- ENVIRONMENTAL CONSULTANT
- GEOGRAPHIC INFORMATION SYSTEMS ANALYST
- GEOINTELLIGENCE ANALYST
- INTERNATIONAL DEVELOPMENT SPECIALIST
- MARKET RESEARCHER
- PUBLIC HEALTH OFFICER
- PUBLIC POLICY RESEARCHER
- REMOTE SENSING IMAGE ANALYST
- URBAN AND REGIONAL PLANNER
- WATER RESOURCE SPECIALIST

GEOGRAPHY

Social Sciences Department
Liberal Arts Campus
4901 East Carson Street
Long Beach, CA 90808

Chris Carter, MBA, Ph.D.

Professor of Geography
(562) 938-4188 | carter@LBCC.edu

Kim Hatch

Professor of Physical Science
(562) 938-4794 | khatch@LBCC.edu

Dr. Janét Hund

Department Head, Social Sciences
(562) 938-4190 | jhund@LBCC.edu

Monique Trombley

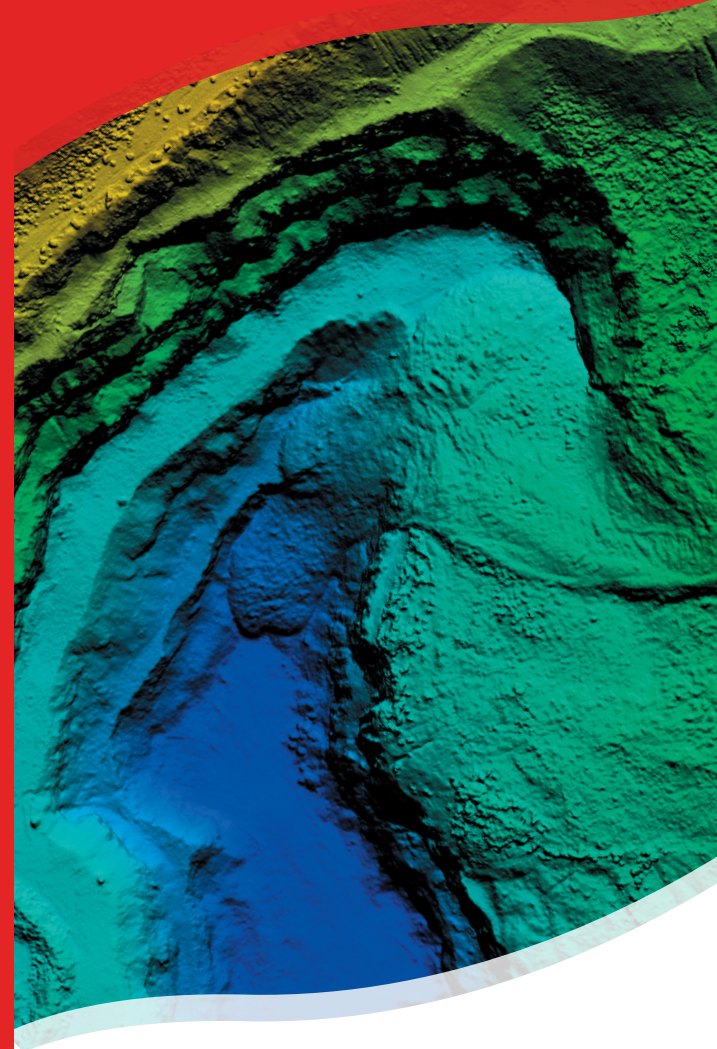
Social Sciences Department Contact
(562) 938-4658 | mtrombley@LBCC.edu



LONG BEACH
CITY COLLEGE

www.LBCC.edu/geography

GEOGRAPHY



 LONG BEACH
CITY COLLEGE

ABOUT THE GEOGRAPHY PROGRAM

The Long Beach City College Geography major provides preparation for general education and meaningful employment in a wide variety of interesting occupations in an increasingly diverse and globalized world.

Geography is a unique spatial science that synthesizes interactions between human society and physical environments to develop a broad understanding of the distribution and organization of both physical and human landscapes and environments.



Geography students develop strong analytical and communication skills, including methods of geographic observation, data collection, analysis, mapping, modeling and reporting of findings.

Many Geography students take advantage of the discipline's geospatial technology, learning digital mapping with geographic information systems, and satellite and aerial remote sensing.

DEGREE & CERTIFICATE OFFERED:

■ Associate in Arts for Transfer (AA-T), Geography

The Associate in Arts for Transfer degree in Geography provides students with a comprehensive knowledge of theoretical concepts of geography and associated knowledge and skills. Geography majors develop an understanding of the spatial organization of physical and human landscapes, interactions between human society and the physical environment, as well as the meanings that people bring to their place in the world.

The AA-T degree also provides a number of benefits for students planning to transfer to the Cal State University (CSU) system, including:

- Guaranteed admission into a CSU school as a Geography major
- Students will be required to complete no more than 60 units after transfer to earn a bachelor's degree

Concentrations include:

- Physical geography, & weather and climate;
- Human geography, including world regional geography, the global economy, & geography of California;
- Technical skills including use & application of Geographic Information Systems, & field techniques in geography.

■ Certificate of Accomplishment, Foundations of Geospatial Data and Programming

This certificate is designed for students who plan to transfer to the California State University system and pursue additional coursework in geographic information systems and other geospatial technologies. The certificate provides students with a solid background in geographic information systems, Excel databases, and computer programming.

EXPERT FACULTY WITH DECADES OF EXPERIENCE



The mission for the highly-qualified LBCC Geography faculty – with many years of classroom and online teaching experience – is to not only instill a thorough understanding of the interactions between society and physical environment, but also ensure that students complete their studies with the professional attitude and desire for life-long learning that is required to launch a successful career in this exciting, ever-evolving field. Faculty remain current on the latest ideas and technologies used by geographers and are presenters at numerous academic and industry conferences. A textbook published by LBCC faculty is in use nationwide.