

RESOURCE FAIR FOR STUDENTS IN NEED

THURSDAY, NOVEMBER 15, 2018

11:30 a.m. – 1 p.m.

Long Beach City College Bistro, Building V
Liberal Arts Campus

Several local and Los Angeles County agencies will be on campus to assist LBCC students in need.

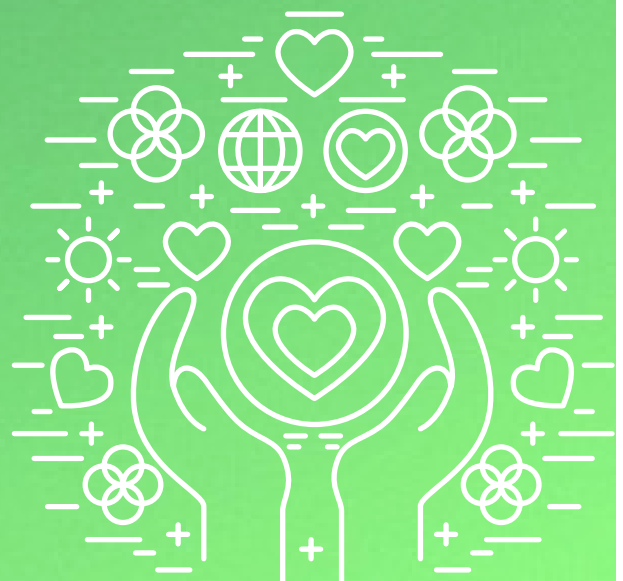
- LA Food Bank/Cal Fresh
- The Jewish Family Center
- LBCC's Student Health Services
- Comprehensive Information Referrals
- Los Angeles County Workforce Development, Aging and Community Services Department
- Los Angeles County Office of Immigrant Affairs
- Los Angeles County Department of Social Services

Find out what services and resources are available to you.

Hosted by the Helping Homeless Students Associate Group of the Long Beach City College Foundation



LONG BEACH
CITY COLLEGE



If you require accommodations, please contact DSPS at least 72 hours prior to the event at (562) 938-4558 or (562) 938-4833 (TTY) or dsps-staff@lbcc.edu. If you require sign language interpreting services, please contact Stephanie Bonales at sbonales@lbcc.edu or (562) 938-4918 at least seven days prior to the event.