



LONG BEACH COMMUNITY COLLEGE DISTRICT
CONTRACTS MANAGEMENT DEPARTMENT
4901 EAST CARSON STREET
LONG BEACH, CA 90808
Ph. (562) 938-4843

BID 22-007
CLARK AVENUE FENCING REPLACEMENT PROJECT

ADDENDUM NO. 1

April 5, 2022

This Addendum forms a part of the Contract Documents and modifies the original Contract Documents. Acknowledge receipt of the Addendum on Section 1.2 of the Bid Proposal. Failure to do so may result in the bid being deemed non-responsive.

Note: *It is the responsibility of all bidders to notify all subcontractors from whom they request bids and from whom they accept bids of all changes contained in this addendum.*

ADDENDUM NO. 1 CONTENTS:

1. Adding additional Mandatory Site Walk Date:

Wednesday, April 6, 2022 – 10:00am – 1:00pm*

*Please coordinate with the District's Assistant Construction Manager:

Chibuikem Agwamba cagwamba.bmt@lbcc.edu

2. Revised Pre-Bid Inquiries (PBIs) Submission Date:

Please submit any pre-bid inquiries by:

Friday, April 8, 2022 – 10:00am*

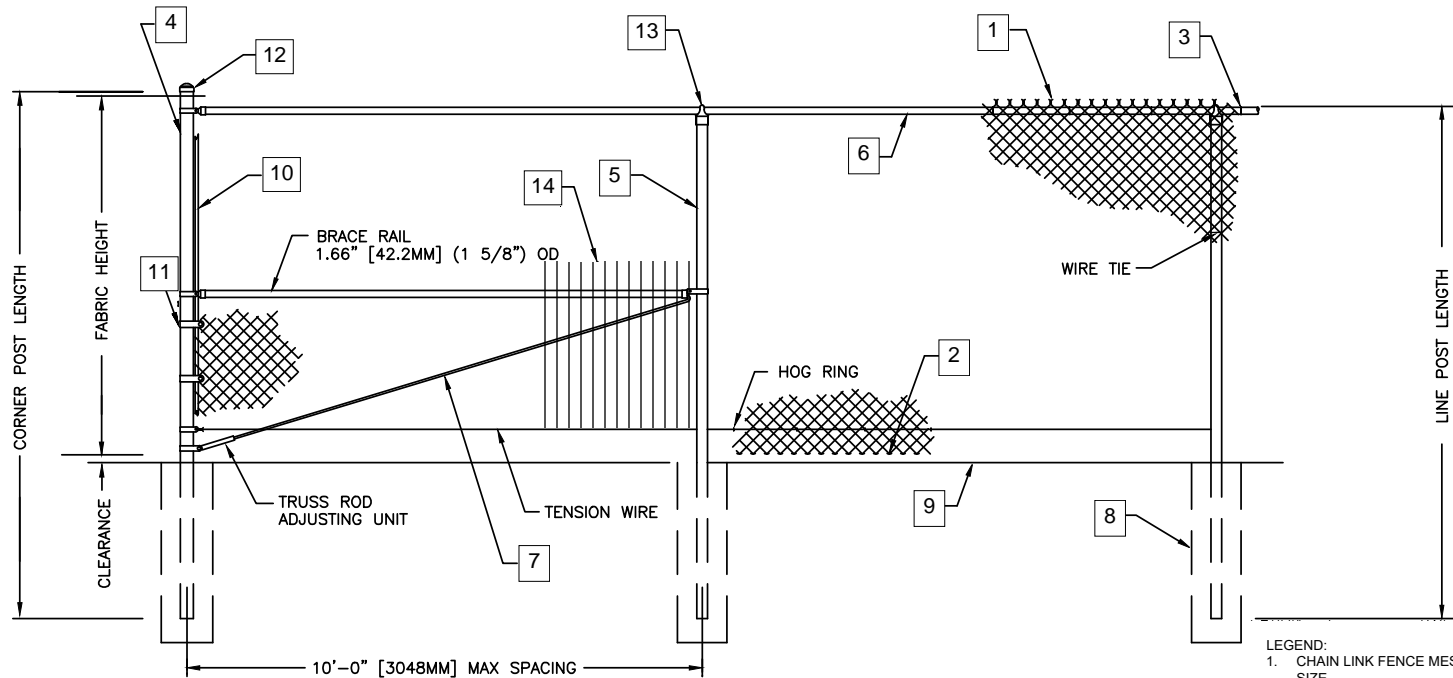
Please email Chibuikem Agwamba at cagwamba.bmt@lbcc.edu with a copy to Erica Bonilla at ebonilla@lbcc.edu.

3. Please see attached document with drawings and photos.

END OF ADDENDUM NO. 1

LONG BEACH COMMUNITY COLLEGE DISTRICT

Erica Bonilla,
Deputy Director, Purchasing and Contracts



TYPICAL FENCE ELEVATION / SECTION

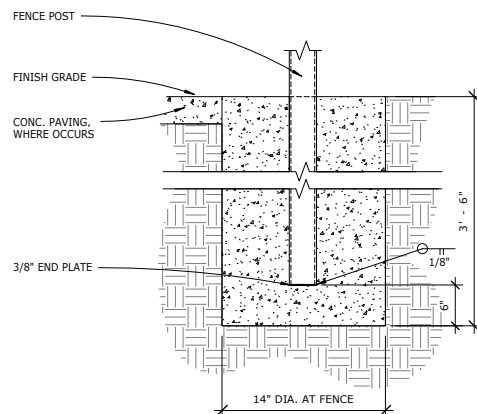
TOP RAIL / TRUSSED BRACE RAIL
BOTTOM TENSION WIRE

LEGEND:

1. CHAIN LINK FENCE MESH. SEE SPECIFICATIONS FOR WIRE GAUGE AND MESH SIZE.
2. KNUCKLED TOP AND BOTTOM SELVAGE.
3. HORIZONTAL RAIL TIRE WIRE. 9 GAUGE WIRE AT 24" MAXIMUM O.C.
4. END/CORNER POST. SEE SCHEDULE FOR SIZE BASED ON HEIGHT.
5. LINE POST. SEE SCHEDULE FOR SIZE BASED ON HEIGHT.
6. HORIZONTAL RAIL. SEE SCHEDULE FOR SIZE BASED ON HEIGHT.
7. ADJUSTABLE TRUSS ROD ASSEMBLY AND TURNBUCKLE. SEE SPECIFICATIONS FOR SIZE.
8. CONCRETE CAISSON FOOTING.
9. ADJACENT HARDSCAPE PAVING.
10. FLAT TENSION BAR PER SPECIFICATIONS.
11. TENSION CLIP/BAND WITH HARDWARE.
12. DOMED POST CAP, TYPICAL.
13. LINE POST CAP.
14. 120 FT OF GREEN PRIVACY SLATS

NOTES:

- A. CONTRACTOR TO VERIFY ALL ATTACHMENTS, DIMENSIONS AND INSTALL PER MANUFACTURERS RECOMMENDATIONS.
- B. ANY COMPONENT REQUIRED FOR A COMPLETE FENCE SYSTEM, BUT NOT SHOWN SHOULD BE CONSIDERED A PART OF THESE DRAWINGS AND INCLUDED IN THE FINAL INSTALLED SYSTEM.
- C. CONTRACTOR TO BE RESPONSIBLE FOR COORDINATING FENCE/GATE POST INSTALLATION WITH THIS REFERENCE SHEET.



FENCE POST FOOTING

POST SCHEDULE

FENCE HEIGHT	END POST	LINE POST	HORIZONTAL RAILS	CLASS	FOOTING DEPTH	FOOTING DIAMETER
TO 8' HIGH	2-7/8" O.D. SCH. 40	2-7/8" O.D. SCH. 40	1.66" OD SCH. 40	1	3'-6"	14"

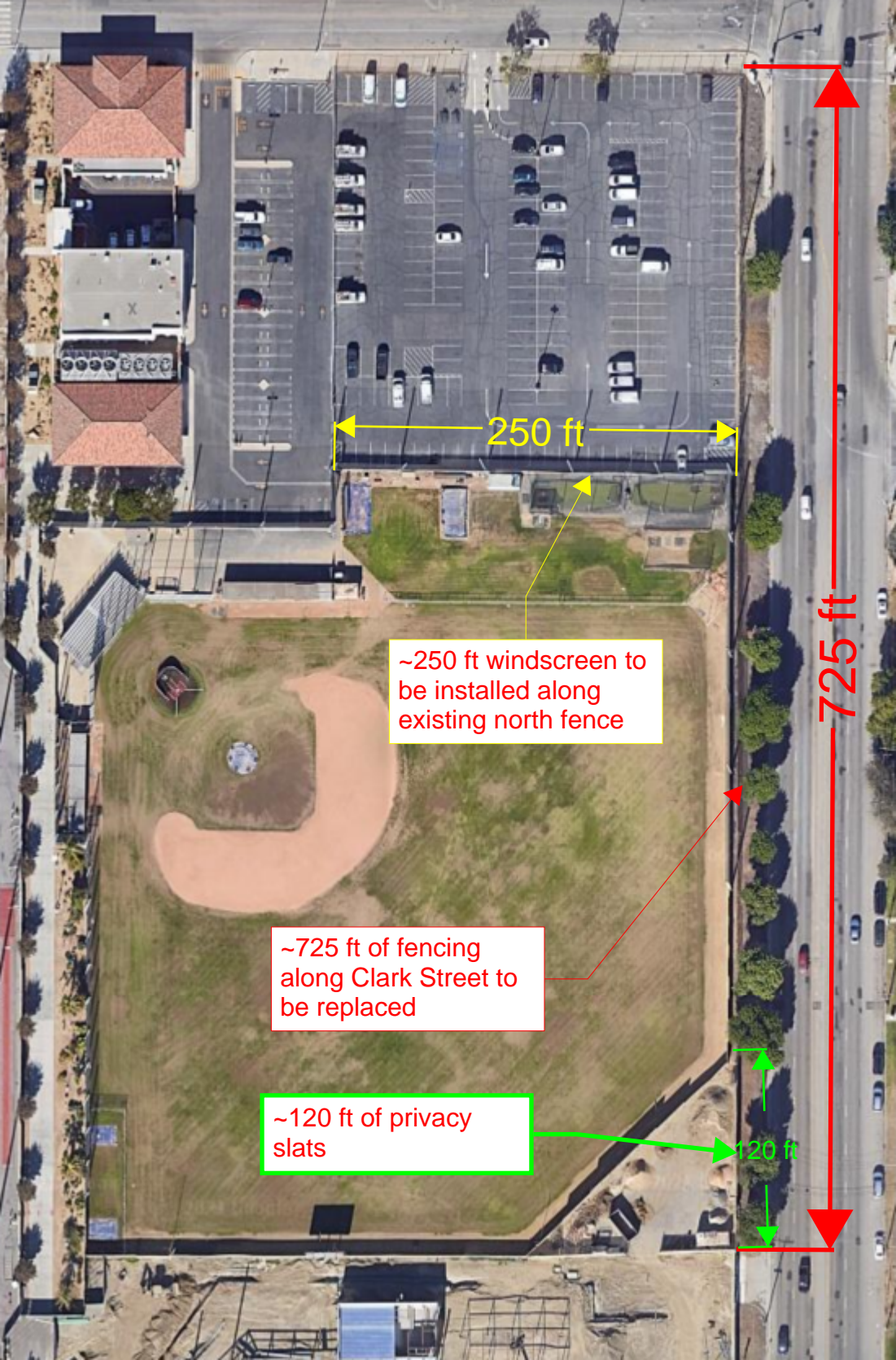
CHAIN LINK TYPICAL FENCE ELEVATION / SECTION

SCALE: NTS

DWG #: CL10

CONCRETE

1. ALL PORTIONS OF WORK PERTAINING TO CONCRETE CONSTRUCTION SHALL CONFORM TO TITLE 24, PART 2, CHAPTER 19A.
2. CONCRETE MIXES SHALL BE DESIGNED BY A QUALIFIED TESTING LABORATORY. MIX DESIGNS SHALL CONFORM TO ACI 318, SEC.26.4, AND CBC SEC.1903A, & SEC.1904A. MIX DESIGNS SHALL INCORPORATE THE FOLLOWING CRITERIA:
 - MINIMUM OF 5 SACKS OF CEMENT PER CUBIC YARD OF CONCRETE. MAXIMUM OF 7 SACKS OF CEMENT PER YARD OF CONCRETE.
 - MAXIMUM WATER/CEMENT RATIO (BY WEIGHT) OF CONCRETE IN CONTACT WITH SOIL SHALL BE 0.45.
 - MAXIMUM SLUMP SHALL NOT EXCEED $4" \pm 1"$ FOR CONCRETE. SLUMP LIMITATIONS NOTED SHALL APPLY TO CONCRETE MIX PRIOR TO THE ADDITION OF ANY WATER-REDUCING ADMIXTURES OR SUPER-PLASTICIZERS. SLUMP FOR CONCRETE THAT INCLUDES A WATER REDUCING ADD MIXTURE MAY INCREASE TO $5" \pm 1"$.
3. SCHEDULE OF STRUCTURAL CONCRETE 28 DAY MINIMUM STRENGTHS AND TYPES:
 - CLF Footing 145 PCF, $f'_c = 3000$ PSI



250 ft

~250 ft windscreen to be installed along existing north fence

~725 ft of fencing along Clark Street to be replaced

~120 ft of privacy slats

725 ft

120 ft